

SELAWIK, ALASKA

AL-9207 (FAA)

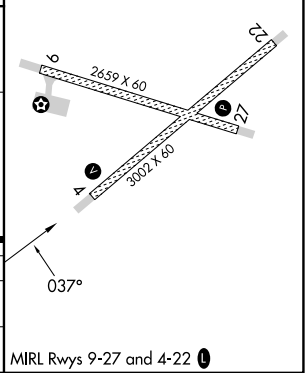
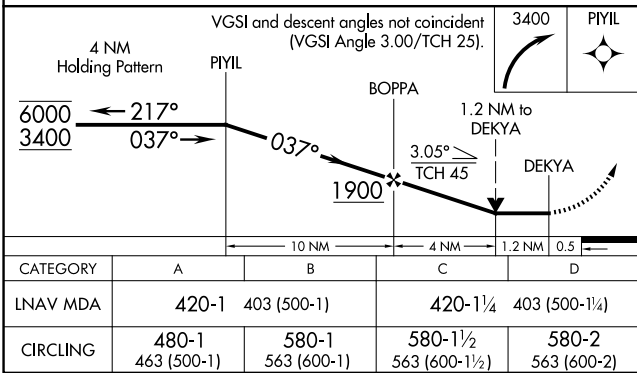
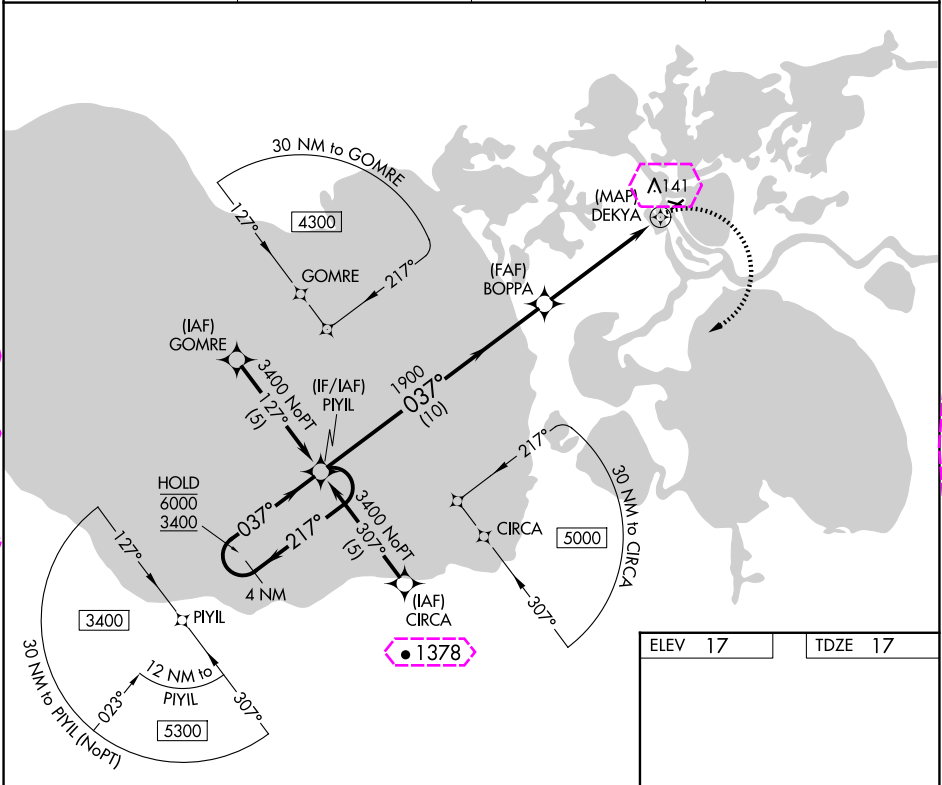
25163

APP CRS	Rwy Ldg	3002
037°	TDZE	17
	Apt Elev	17

RNAV (GPS) RWY 4

SELAWIK (WLK) (PASK)

RNP APCH. ▼ Circling Rwy 9, 27 NA at night. Rwy 4 helicopter visibility reduction below ¾ SM NA.		MISSED APPROACH: Climbing right turn to 3400 direct PIYIL and hold.	
AWOS-3P 135.65	ANCHORAGE CENTER 119.2 263.0	KOTzebue RADIO 122.5	CTAF 122.7 0



SELAWIK, ALASKA
Orig-E 17JUN21

66°36'N-159°59'W

SELAWIK (WLK) (PASK)
RNAV (GPS) RWY 4

AK, 12 JUN 2025 to 07 AUG 2025

AK, 12 JUN 2025 to 07 AUG 2025

SELAWIK, ALASKA

AL-9207 (FAA)

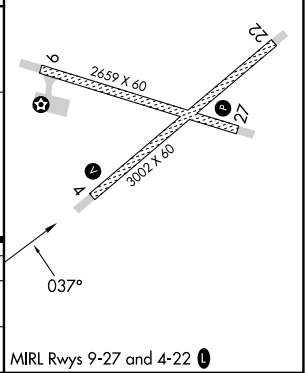
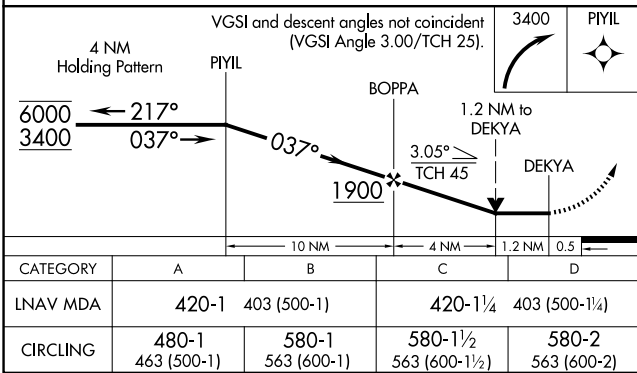
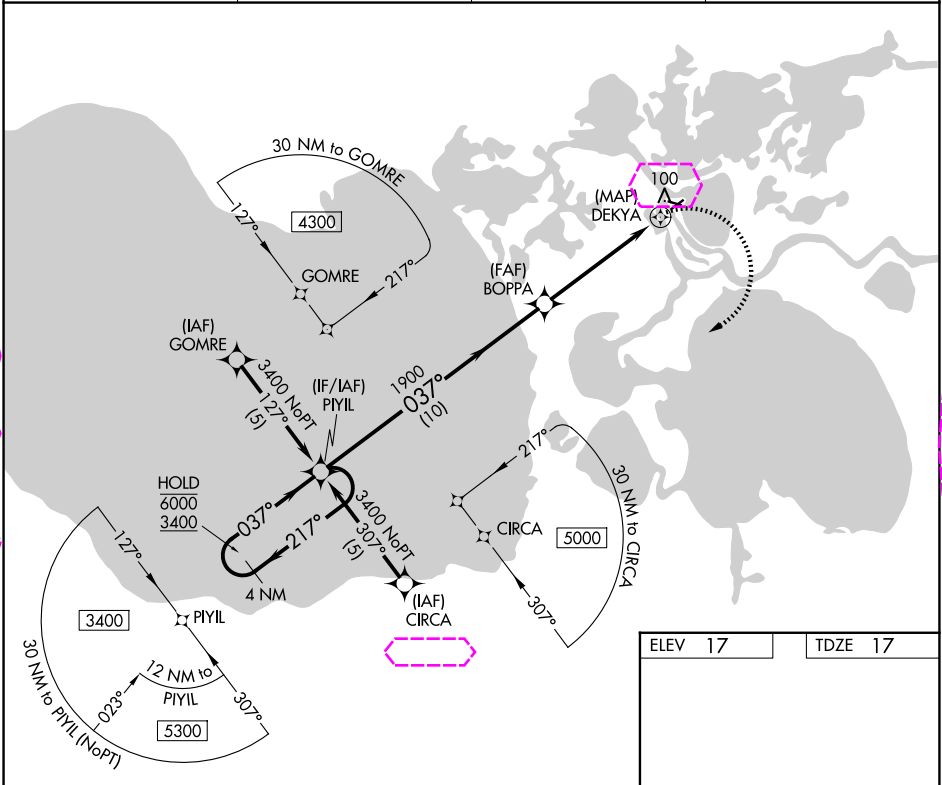
25219

APP CRS	Rwy Ldg	3002
037°	TDZE	17
	Apt Elev	17

RNAV (GPS) RWY 4

SELAWIK (WLK) (PASK)

RNP APCH. ▼ Circling Rwy 9, 27 NA at night. Rwy 4 helicopter visibility reduction below ¾ SM NA.		MISSED APPROACH: Climbing right turn to 3400 direct PIYIL and hold.	
AWOS-3P 135.65	ANCHORAGE CENTER 119.2 263.0	KOTzebue RADIO 122.5	CTAF 122.7 0



SELAWIK, ALASKA
Orig-E 17JUN21

66°36'N-159°59'W

SELAWIK (WLK) (PASK)
RNAV (GPS) RWY 4

AK, 07 AUG 2025 to 02 OCT 2025

AK, 07 AUG 2025 to 02 OCT 2025