

SELAWIK (WLK) (PASK)
RNAV (GPS) RWY 27

SELAWIK, ALASKA

AL-9207 (FAA)

25219

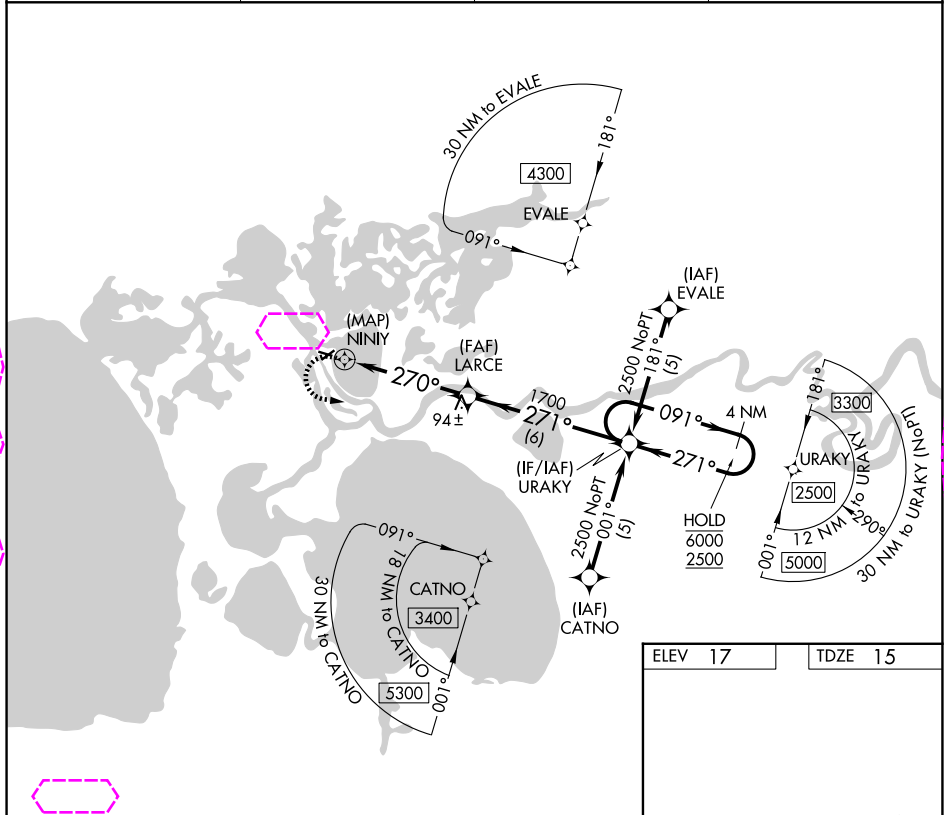
APP CRS	Rwy Ldg	2659
270°	TDZE	15
	Apt Elev	17

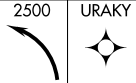
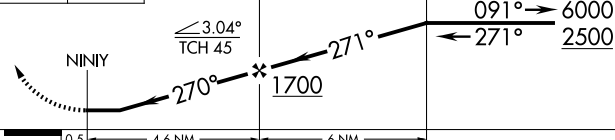
RNAV (GPS) RWY 27

SELAWIK (WLK) (PASK)

RNP APCH.	MISSED APPROACH: Climbing left turn to 2500 direct URAKY and hold.
▼ Rwy 27 helicopter visibility reduction below 1 SM NA. Straight-in and Circling Rwy 27 NA at night, Circling Rwy 9 NA at night.	

AWOS-3P 135.65	ANCHORAGE CENTER 119.2 263.0	KOTZEBUE RADIO 122.5	CTAF 122.7 0
-------------------	---------------------------------	-------------------------	-----------------



		VGSI and descent angles not coincident (VGSI Angle 3.00/TCH 25).		4 NM Holding Pattern	
					
CATEGORY	A		B	C	D
LNVA MDA	420-1 405 (500-1)		420-1¼ 405 (500-1¼)		
CIRCLING	480-1 463 (500-1)	580-1 563 (600-1)	580-1½ 563 (600-1½)	580-2 563 (600-2)	

