

SCRIBNER, NEBRASKA

AL-9203 (FAA)

24361

VOR/DME SCB 111.0 Chan 47	APP CRS 341°	Rwy Idg TDZE 1319 Apt Elev 1325
---	------------------------	---

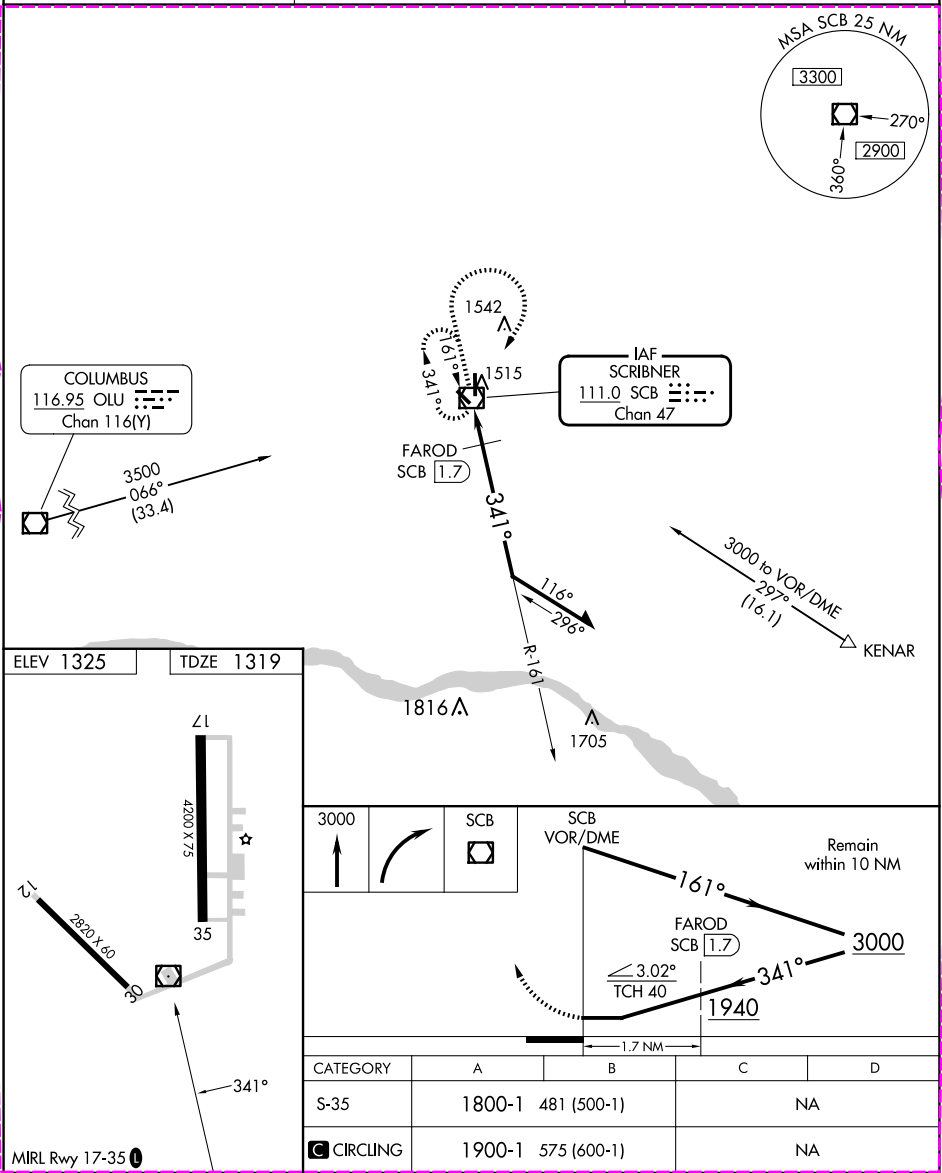
VOR/DME RWY 35
SCRIBNER STATE (SCB)

 **NA**

Use Fremont altimeter setting.

MISSED APPROACH: Climb to 3000 then right turn direct SCB VOR/DME and hold.

FET AWOS-3 121.275	OMAHA APP CON 135.875 354.05	CTAF 122.9
------------------------------	--	----------------------



SCRIBNER, NEBRASKA
Amdt 2C 23APR20

41°37'N-96°38'W

SCRIBNER STATE (SCB)
VOR/DME RWY 35

NC-2, 10 JUL 2025 to 07 AUG 2025

NC-2, 10 JUL 2025 to 07 AUG 2025

SCRIBNER STATE (SCB)
VOR RWY 35