

SCRIBNER, NEBRASKA

AL-9203 (FAA)

24361

WAAS CH 62934 W35A	APP CRS 356°	Rwy Idg 4200 TDZE 1319 Apt Elev 1325
--	------------------------	---

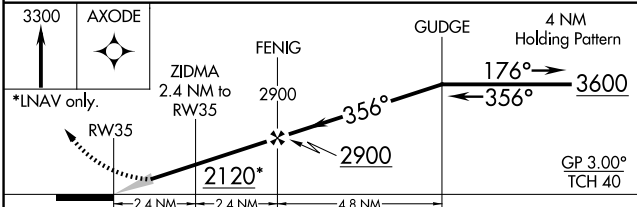
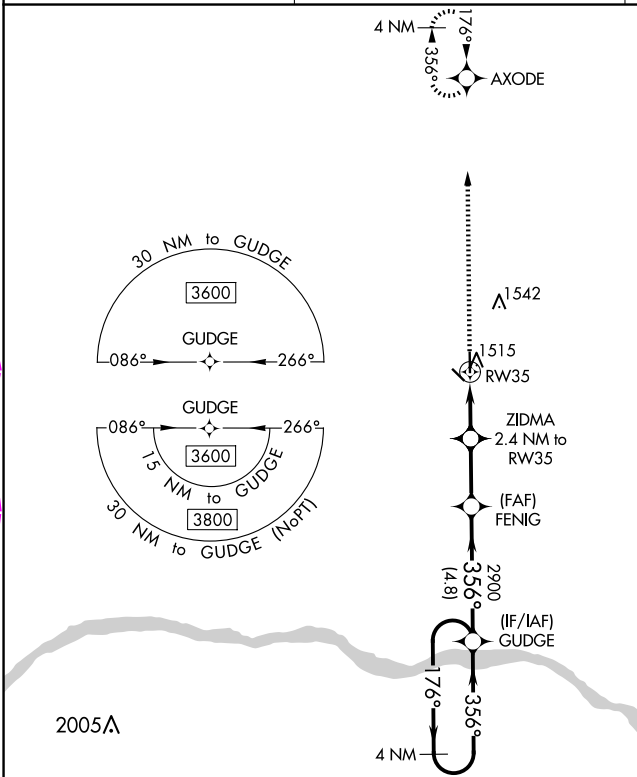
RNAV (GPS) RWY 35

SCRIBNER STATE (SCB)

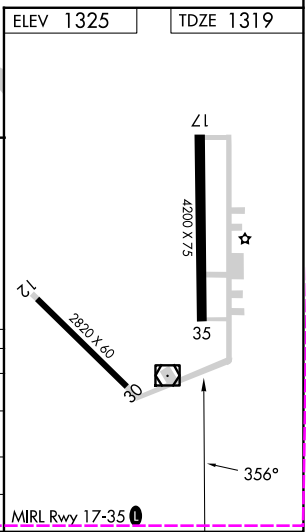
NA DME/DME RNP-0.3 NA. Use Fremont altimeter setting, when not received use Wahoo altimeter setting and increase all DA 24 feet and all MDA 40 feet. Helicopter visibility reduction below 3/4 SM NA. Baro-VNAV NA.

MISSED APPROACH: Climb to 3300 direct AXODE and hold.

FET AWOS-3 121.275	OMAHA APP CON 135.875 354.05	CTAF 122.9
------------------------------	--	----------------------



CATEGORY	A	B	C	D
LPV DA	1606-1	287 (300-1)		NA
LNAV/ VNAV DA	1744-1½	425 (500-1½)		NA
LNAV MDA	1840-1	521 (600-1)		NA
CIRCLING	1900-1	575 (600-1)		NA



NC-2, 10 JUL 2025 to 07 AUG 2025

NC-2, 10 JUL 2025 to 07 AUG 2025

SCRIBNER, NEBRASKA

Amdt 1B 31MAR16

41°37'N-96°38'W

SCRIBNER STATE (SCB)

RNAV (GPS) RWY 35

WAAS CH 62934 W35A	APP CRS 356°	Rwy Ldg 4200 TDZE 1320 Apt Elev 1325
--	------------------------	---

RNAV (GPS) RWY 35
SCRIBNER STATE (SCB)

RNP APCH - GPS.

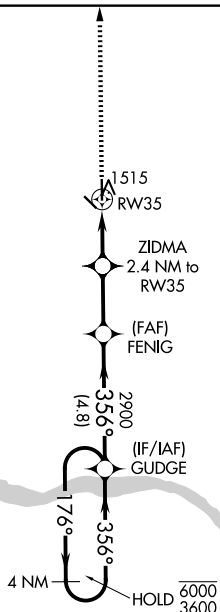
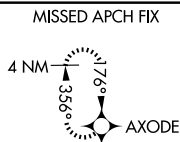
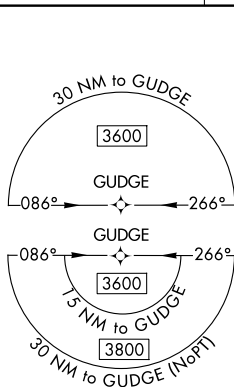
T Baro-VNAV NA. Circling Rwy 17 NA at night. Use FET altimeter setting; when not received, use AHQ altimeter setting and increase LPV DA to 1629 feet; increase LNAV/VNAV DA to 1767 feet and all visibilities $\frac{1}{8}$ SM. Increase all MDAs 40 feet.

MISSED APPROACH: Climb to 3300
direct AXODE and hold.

FET AWOS-3
121.275

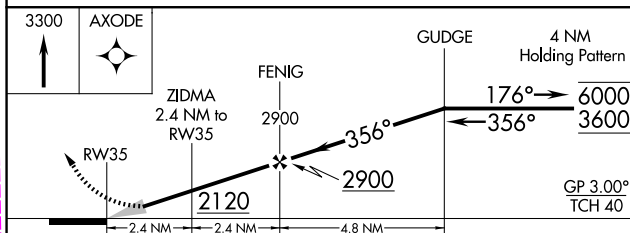
OMAHA APP CON
135.875 354.05

CTAF
122.9

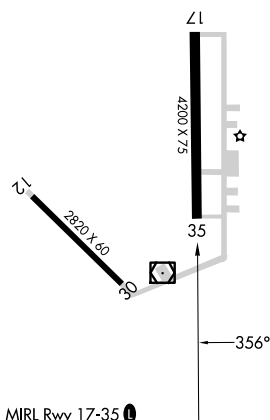


ELEV 1325

TDZE 1320



CATEGORY		A	B	C	D
LPV	DA	1606-7/8	286 (300-7/8)	NA	
INAV/ VNAV	DA	1744-1¼	424 (500-1¼)	NA	
INAV MDA		1840-1	520 (600-1)	NA	
CIRCLING		1900-1	575 (600-1)	NA	



SCRIBNER, NEBRASKA

Amdt 1C 07AUG25

41°37'N-96°38'W

SCRIBNER STATE (SCB)

RNAV (GPS) RWY 35

NC-2, 07 AUG 2025 to 04 SEP 2025