

HARRISONVILLE, MISSOURI

AL-9144 (FAA)

25051

|         |          |      |
|---------|----------|------|
| APP CRS | Rwy Idg  | 4000 |
| 353°    | TDZE     | 900  |
|         | Apt Elev | 915  |

# RNAV (GPS) RWY 35

LAWRENCE SMITH MEML (L.R.Y.)

RNP APCH.

- ▼ Procedure NA at night.  
▲ Rwy 35 helicopter visibility reduction below 1 SM NA.

MISSED APPROACH: Climb to 3000 direct FEMIL and hold.

AWOS-3PT

119.975

KANSAS CITY CENTER

125.55 327.0

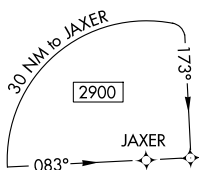
UNICOM

123.0 (CTAF) 0

MISSED APCH FIX



▲1546



RW35

1178 ▲

353°

(6.3)

2500

353°

(5)

2600 NoPT

083°

(5)

2600 NoPT

263°

(5)

2600

353°

4 NM

HOLD

6000

2600

353°

4 NM

HOLD

6000

2600

353°

4 NM

HOLD

6000

2600

353°

4 NM

HOLD

6000

2600

353°

4 NM

HOLD

6000

2600

353°

4 NM

HOLD

6000

2600

353°

4 NM

HOLD

6000

2600

353°

4 NM

HOLD

6000

2600

353°

4 NM

HOLD

6000

2600

353°

4 NM

HOLD

6000

2600

353°

4 NM

HOLD

6000

2600

353°

4 NM

HOLD

6000

2600

353°

4 NM

HOLD

6000

2600

353°

4 NM

HOLD

6000

2600

353°

4 NM

HOLD

6000

2600

353°

4 NM

HOLD

6000

2600

353°

4 NM

HOLD

6000

2600

353°

4 NM

HOLD

6000

2600

353°

4 NM

HOLD

6000

2600

353°

4 NM

HOLD

6000

2600

353°

4 NM

HOLD

6000

2600

353°

4 NM

HOLD

6000

2600

353°

4 NM

HOLD

6000

2600

353°

4 NM

HOLD

6000

2600

353°

4 NM

HOLD

6000

2600

353°

4 NM

HOLD

6000

2600

353°

4 NM

HOLD

6000

2600

353°

4 NM

HOLD

6000

2600

353°

4 NM

HOLD

6000

2600

353°

4 NM

HOLD

6000

2600

353°

4 NM

HOLD

6000

2600

353°

4 NM

HOLD

6000

2600

353°

4 NM

HOLD

6000

2600

353°

4 NM

HOLD

6000

2600

353°

4 NM

HOLD

6000

2600

353°

4 NM

HOLD

6000

2600

353°

4 NM

HOLD

6000

2600

353°

4 NM

HOLD

6000

2600

353°

4 NM

HOLD

6000

2600

353°

4 NM

HOLD

6000

2600

353°

4 NM

HOLD

6000

2600

353°

4 NM

HOLD

6000

2600

353°

4 NM

HOLD

6000

2600

353°

4 NM

HOLD

6000

2600

353°

4 NM

HOLD

6000

2600

353°

4 NM

HOLD

6000

2600

353°

4 NM

HOLD

6000

2600

353°

4 NM

HOLD

6000

2600

353°

4 NM

HOLD

6000

2600

353°

4 NM

HOLD

6000

2600

353°

4 NM

HOLD

6000

2600

353°

4 NM

HOLD

6000

2600

353°

4 NM

HOLD

6000

2600

353°

4 NM

HOLD

6000

2600

353°

4 NM

HOLD

6000

2600

353°

4 NM

HOLD

6000

2600

353°

4 NM

HOLD

6000

2600

353°

4 NM

HOLD

6000

2600

353°

4 NM

HOLD

6000

2600

353°

4 NM

HOLD

6000

2600

353°

4 NM

HOLD

6000

2600

353°

4 NM

HOLD

6000

2600

353°

4 NM

HOLD

6000

2600

353°

4 NM

HOLD

6000

2600

353°

4 NM

HOLD

6000

2600

353°

4 NM

HOLD

6000

2600

353°

4 NM

HOLD

6000

HARRISONVILLE, MISSOURI

AL-9144 (FAA)

25219

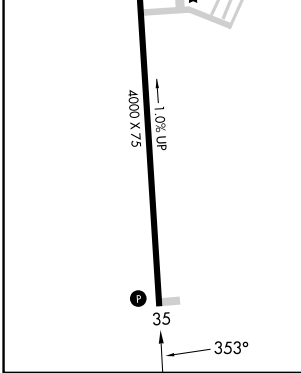
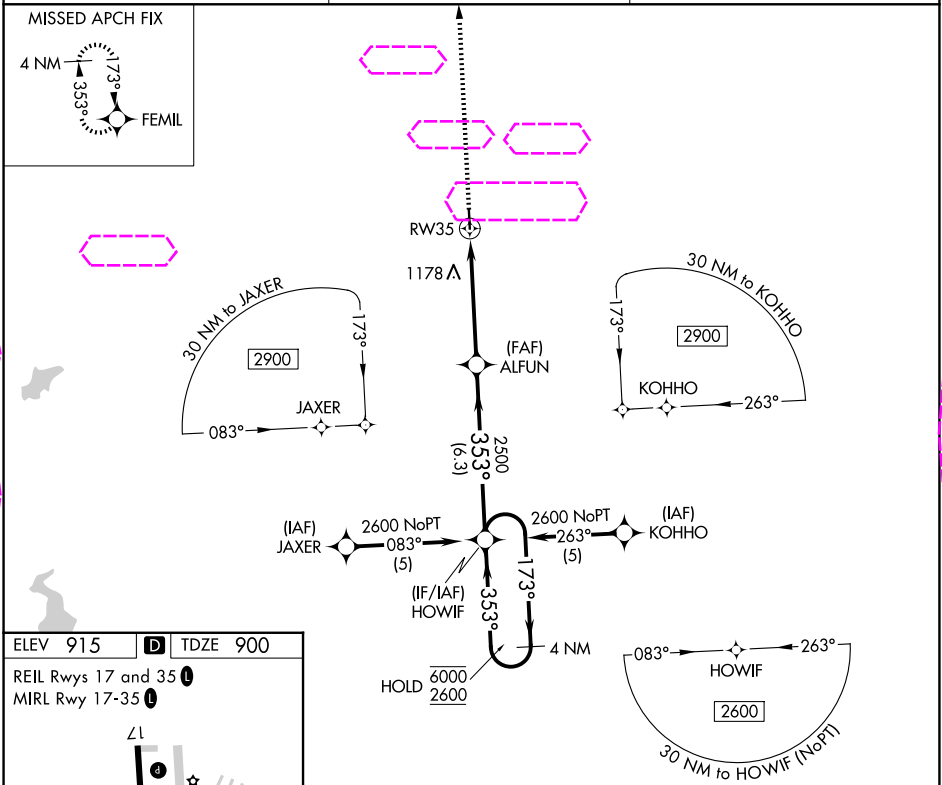
|         |          |      |
|---------|----------|------|
| APP CRS | Rwy Ldg  | 4000 |
| 353°    | TDZE     | 900  |
|         | Apt Elev | 915  |

# RNAV (GPS) RWY 35

LAWRENCE SMITH MEML (L.R.Y)

|   |   |
|---|---|
| RNP APCH.   | MISSED APPROACH: Climb to 3000 direct FEMIL and hold. |
| ▼ Procedure NA at night.<br>▲ Rwy 35 helicopter visibility reduction below 1 SM NA. |   |

|                     |                                    |                          |
|---------------------|------------------------------------|--------------------------|
| AWOS-3PT<br>119.975 | KANSAS CITY CENTER<br>125.55 327.0 | UNICOM<br>122.9 (CTAF) 0 |
|---------------------|------------------------------------|--------------------------|



|          |                    |  |                            |    |           |
|----------|--------------------|--|----------------------------|----|-----------|
| 3000     | FEMIL              | VGSI and descent angles not coincident (VGSI Angle 3.00/TCH 47). |                            |    |           |
| ↑        |                    | HOWIF 4 NM Holding Pattern                                       |                            |    |           |
| RW35     |                    | ALFUN  | 353°                       |    | 6000 2600 |
| 4.9 NM   |                    | 6.3 NM   |                            |    |           |
| CATEGORY | A                  | B  | C                          | D  |           |
| LNAV MDA | 1380-1             | 480 (500-1)  | 1380-1 3/8 480 (500-1 3/8) | NA |           |
| CIRCLING | 1400-1 485 (500-1) | 1460-1 545 (600-1)   | 1520-1 3/4 605 (700-1 3/4) | NA |           |

HARRISONVILLE, MISSOURI

Orig-C 22APR21

38°37'N-94°21'W

# RNAV (GPS) RWY 35