

HARRISONVILLE, MISSOURI

AL-9144 (FAA)

25107

APP CRS	Rwy Idg	4000
173°	TDZE	915
	Apt Elev	915

RNAV (GPS) RWY 17

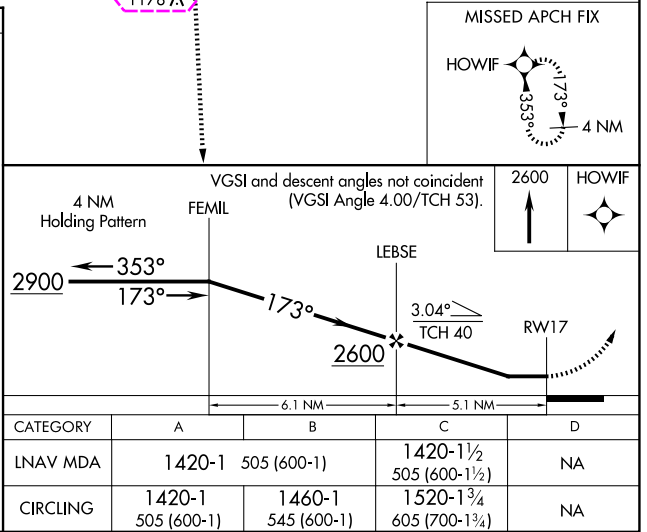
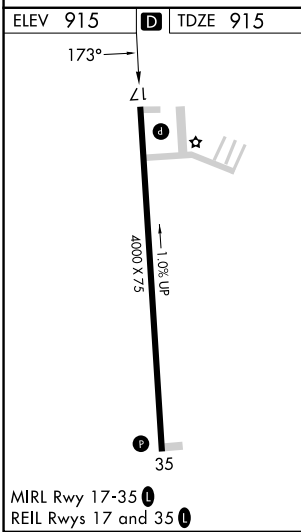
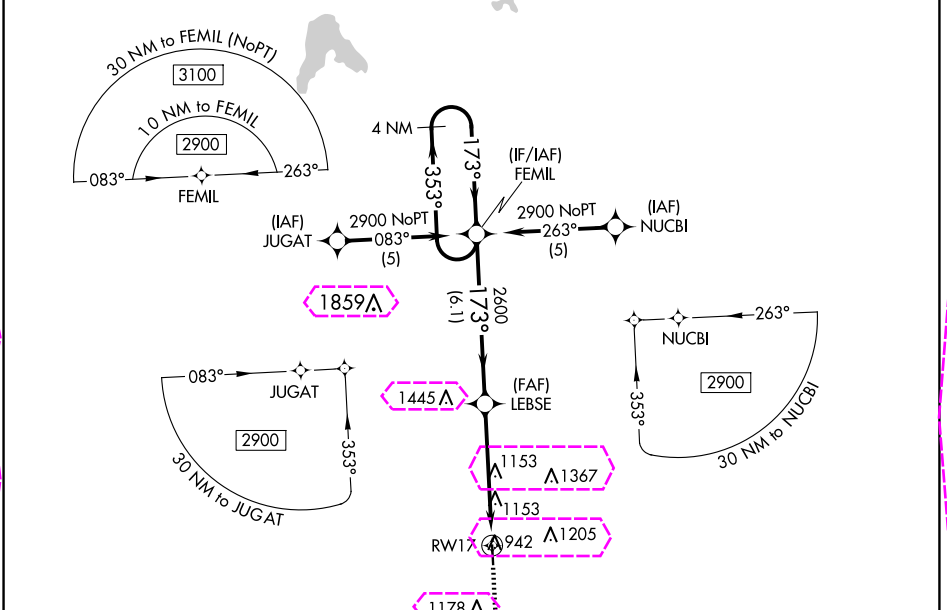
LAWRENCE SMITH MEML (L.R.Y)

RNP APCH.

When local altimeter setting not received, use Kansas City Downtown/Wheeler Fld altimeter setting: increase all MDAs 100 feet and visibility Cat C ¼ mile. Procedure NA at night. Rwy 17 helicopter visibility reduction below 1 SM NA.

MISSED APPROACH: Climb to 2600 direct HOWIF and hold.

AWOS-3PT 119.975	KANSAS CITY CENTER 125.55 327.0	UNICOM 123.0 (CTAF)
---------------------	------------------------------------	------------------------



HARRISONVILLE, MISSOURI
Orig-B 22APR21

38°37'N-94°21'W

LAWRENCE SMITH MEML (L.R.Y)
RNAV (GPS) RWY 17

NC-3, 10 JUL 2025 to 07 AUG 2025

NC-3, 10 JUL 2025 to 07 AUG 2025

HARRISONVILLE, MISSOURI

AL-9144 (FAA)

25219

APP CRS	Rwy Ldg	4000
173°	TDZE	915
	Apt Elev	915

RNAV (GPS) RWY 17

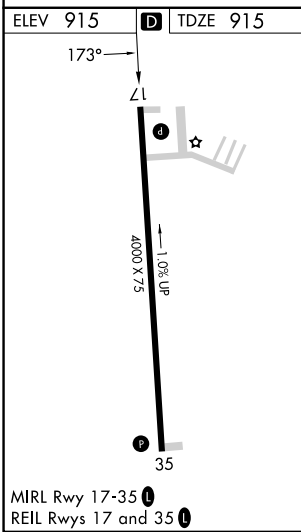
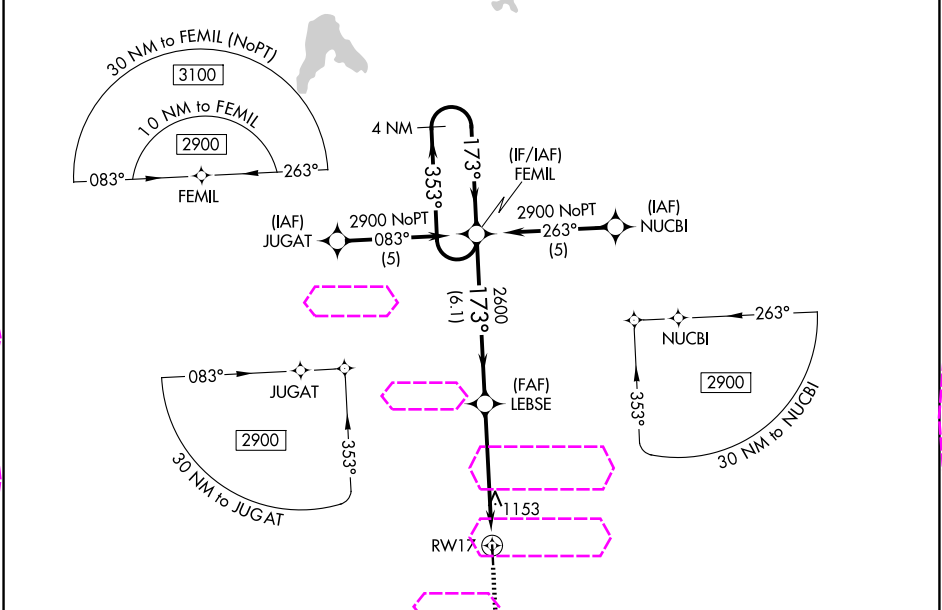
LAWRENCE SMITH MEML (L.R.Y)

RNP APCH.

When local altimeter setting not received, use Kansas City Downtown/Wheeler Fld altimeter setting: increase all MDAs 100 feet and visibility Cat C ¼ mile. Procedure NA at night. Rwy 17 helicopter visibility reduction below 1 SM NA.

MISSED APPROACH: Climb to 2600 direct HOWIF and hold.

AWOS-3PT 119.975	KANSAS CITY CENTER 125.55 327.0	UNICOM 122.9 (CTAF) 0
---------------------	------------------------------------	--------------------------



MISSED APCH FIX			
HOWIF			
VGSI and descent angles not coincident (VGSI Angle 4.00/TCH 53).			
4 NM Holding Pattern			
FEMIL			
LEBSE			
RWY 17			
TCH 40			
6.1 NM			
5.1 NM			
CATEGORY	A	B	C
LNAV MDA	1420-1	505 (600-1)	1420-1½
CIRCLING	1420-1	1460-1	1520-1¾
	505 (600-1)	545 (600-1)	605 (700-1¾)
			NA

HARRISONVILLE, MISSOURI
Orig-B 22APR21

38°37'N-94°21'W

RNAV (GPS) RWY 17

NC-3, 07 AUG 2025 to 04 SEP 2025

NC-3, 07 AUG 2025 to 04 SEP 2025