

MOUNT STERLING, ILLINOIS

AL-9120 (FAA)

23054

WAAS CH 97712 W36A	APP CRS 360°	Rwy Idg 5905 TDZE 725 Apt Elev 734
--	------------------------	---

RNAV (GPS) RWY 36

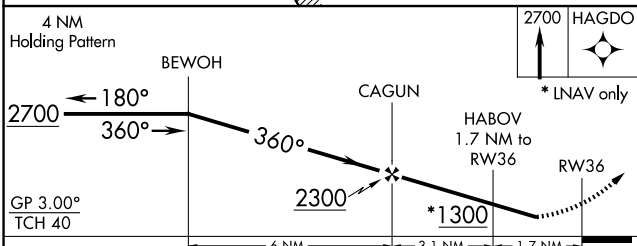
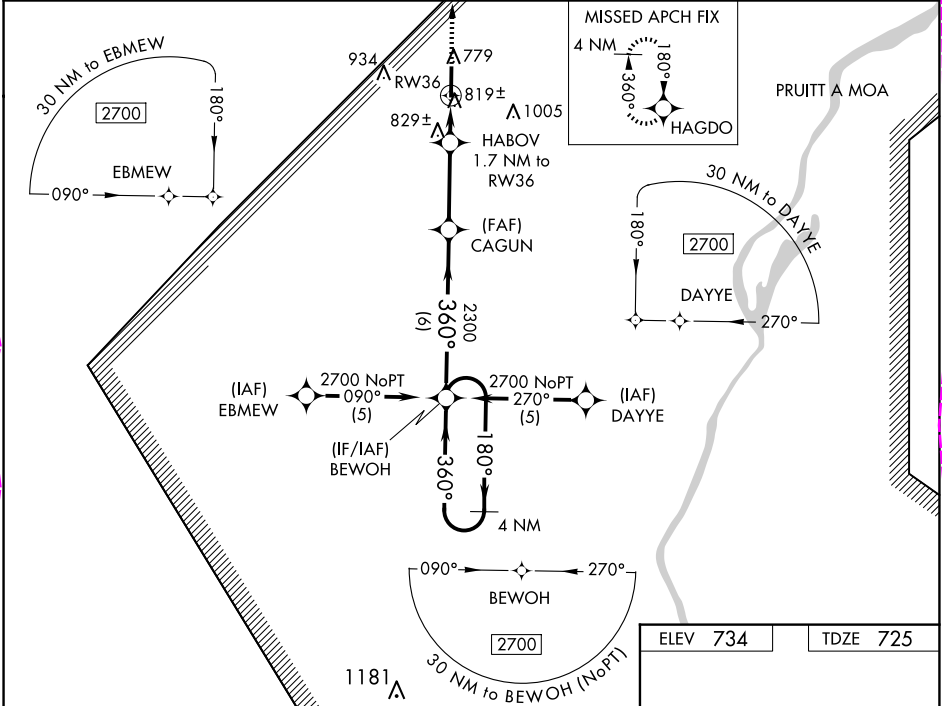
MOUNT STERLING MUNI (I63)

RNP APCH.

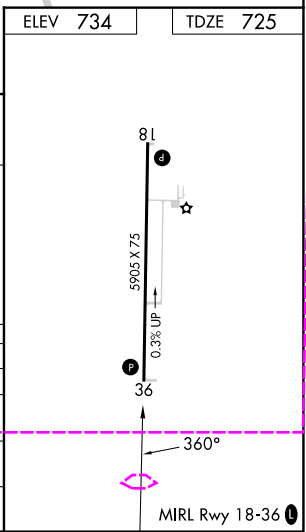
Baro-VNAV NA. Rwy 36 helicopter visibility reduction below 3/4 SM NA.
When local altimeter setting not received, use Quincy altimeter setting: increase Circling Cat C and D MDA 60 feet and visibility Circling Cat C and D 1/4 SM.

MISSED APPROACH: Climb to 2700 direct HAGDO and hold.

AWOS-3PT 118.325	UIN ASOS 121.425	KANSAS CITY CENTER 126.225 317.775	UNICOM 122.8 (CTAF) 0
----------------------------	----------------------------	--	---------------------------------



CATEGORY	A	B	C	D
LPV DA		1074-1 1/4	349 (400-1 1/4)	
LNAV/VNAV DA		1136-1 1/2	411 (500-1 1/2)	
LNAV MDA	1140-1	415 (500-1)	1140-1 1/4	415 (500-1 1/4)
CIRCLING	1200-1	466 (500-1)	1360-1 3/4 626 (700-1 3/4)	1360-2 626 (700-2)



MOUNT STERLING, ILLINOIS
Orig-B 02DEC21

39°59'N-90°48'W

MOUNT STERLING MUNI (I63)
RNAV (GPS) RWY 36

EC-3, 10 JUL 2025 to 07 AUG 2025

EC-3, 10 JUL 2025 to 07 AUG 2025

MOUNT STERLING, ILLINOIS

AL-9120 (FAA)

25219

WAAS CH 97712 W36A	APP CRS 360°	Rwy Ldg 5905 TDZE 725 Apt Elev 734
--	------------------------	---

RNAV (GPS) RWY 36

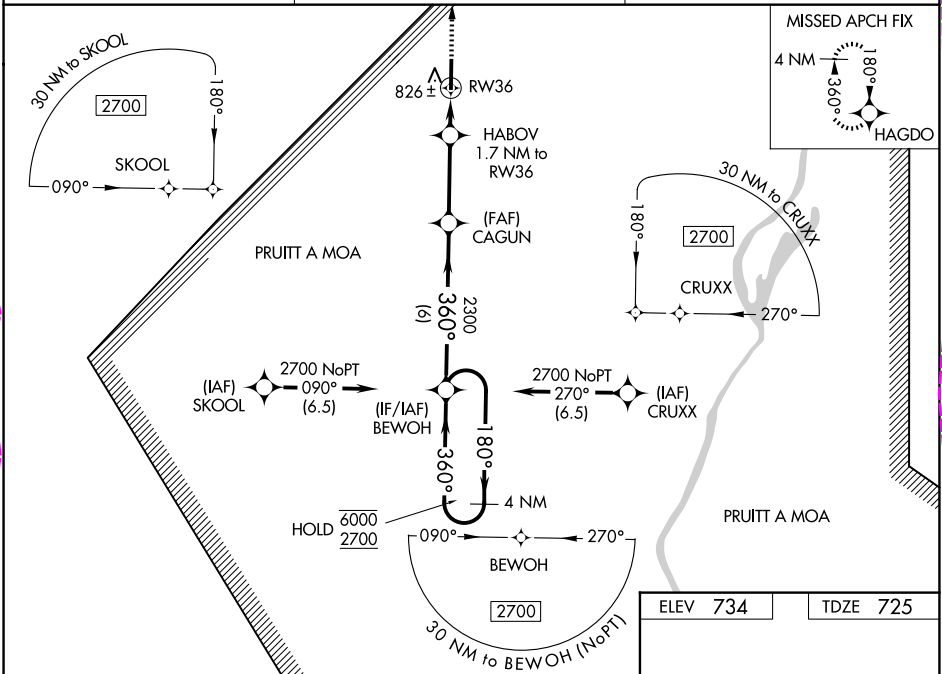
MOUNT STERLING MUNI (I63)

RNP APCH - GPS.

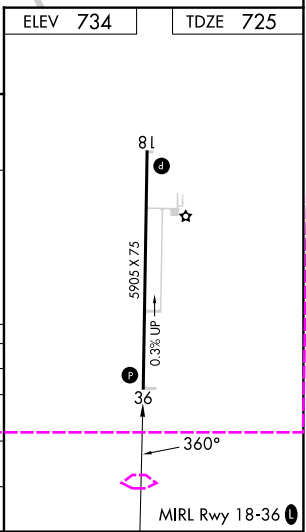
⚠ Rwy 36 helicopter visibility reduction below $\frac{3}{4}$ SM NA. For uncompensated Baro-VNAV systems, LNAV/VNAV NA below -16°C or above 54°C. Baro-VNAV and VDP NA when using UIN altimeter setting. When local altimeter setting not received, use UIN altimeter setting and increase LPV DA to 1062 feet; increase LNAV/VNAV DA to 1041; increase all MDAs 60 feet and LNAV visibility Cat C/D $\frac{1}{8}$ SM, and Circling visibility Cat C/D $\frac{1}{4}$ SM.

MISSED APPROACH:
Climb to 2700 direct HAGDO and hold.

AWOS-3PT 118.325	KANSAS CITY CENTER 126.225 317.775	UNICOM 122.8 (CTAF) 0
----------------------------	--	---------------------------------



4 NM Holding Pattern		2700 HAGDO	
6000 ← 180°		2700	
2700 → 360°		2300	
GP 3.00° TCH 42		1300	
BEWOH		CAGUN	
6 NM		3.1 NM	
HABOV 1.7 NM to RW36		1 NM to RW36	
2300		RW36	
CATEGORY	A	B	C
LPV DA		1016-1	291 (300-1)
LNAV/VNAV DA		995-1	270 (300-1)
LNAV MDA		1080-1	355 (400-1)
CIRCLING	1160-1 426 (500-1)	1200-1 466 (500-1)	1360-1 $\frac{3}{4}$ 626 (700-1 $\frac{3}{4}$)



MOUNT STERLING, ILLINOIS
Amdt 1 07AUG25

39°59'N-90°48'W

MOUNT STERLING MUNI (I63)
RNAV (GPS) RWY 36

EC-3, 07 AUG 2025 to 04 SEP 2025

EC-3, 07 AUG 2025 to 04 SEP 2025