

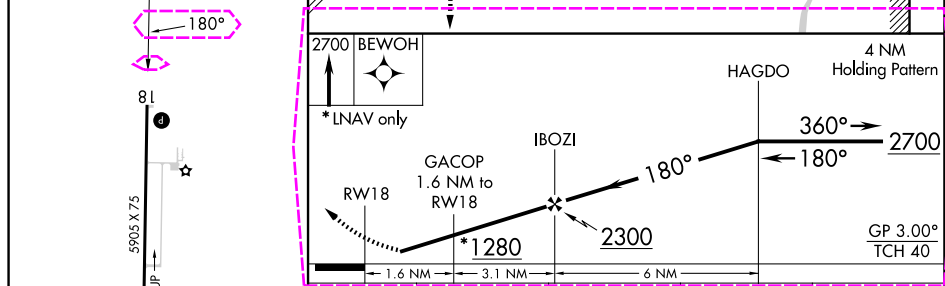
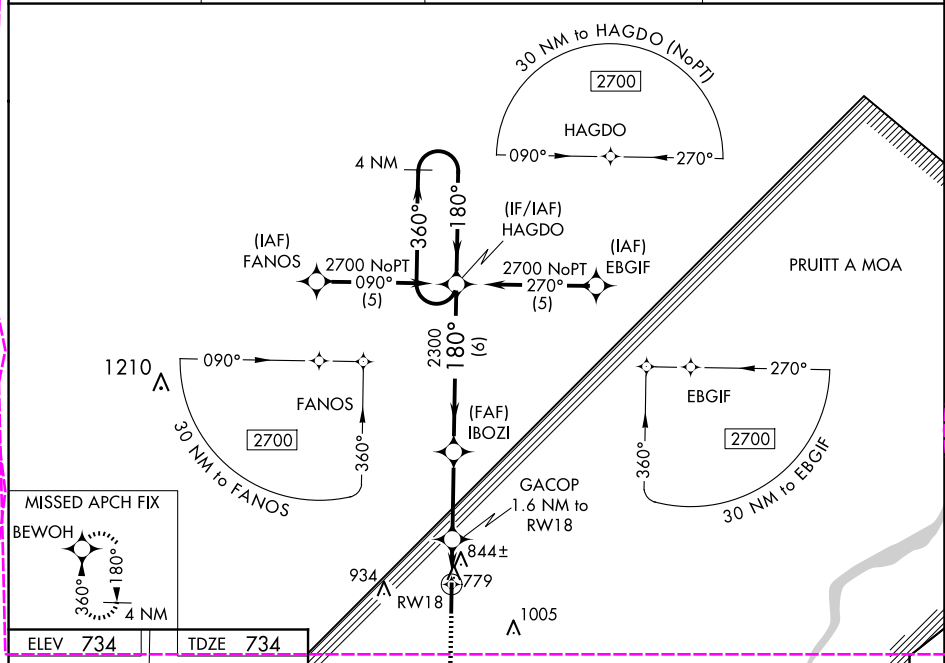
WAAS CH 45912 W18A	APP CRS 180°	Rwy Idg TDZE 734 Apt Elev 734	5905 734 734
--	------------------------	---	---

RNAV (GPS) RWY 18

MOUNT STERLING MUNI (I63)

RNP APCH.	Baro-VNAV NA. Rwy 18 helicopter visibility reduction below $\frac{3}{4}$ SM NA. When local altimeter setting not received, use Quincy altimeter setting: increase Circling Cat C and D MDA 60 feet and visibility Circling Cat C and D $\frac{1}{4}$ SM.	MISSED APPROACH: Climb to 2700 direct BEWOH and hold.
-----------	--	---

AWOS-3PT 118.325	UIN ASOS 121.425	KANSAS CITY CENTER 126.225 317.775	UNICOM 122.8 (CTAF) 0
----------------------------	----------------------------	--	---------------------------------



CATEGORY	A	B	C	D
LPV DA		1066-1 $\frac{1}{4}$ 332 (400-1 $\frac{1}{4}$)		
LNAV/VNAV DA		1191-1 $\frac{3}{4}$ 457 (500-1 $\frac{3}{4}$)		
LNAV MDA	1160-1 426 (500-1)		1160-1 $\frac{1}{4}$ 426 (500-1 $\frac{1}{4}$)	
CIRCLING	1200-1 466 (500-1)		1360-1 $\frac{3}{4}$ 626 (700-1 $\frac{3}{4}$)	1360-2 626 (700-2)

WAAS CH 45912 W18A	APP CRS 180°	Rwy Ldg TDZE Apt Elev	5905 734 734
--	------------------------	-----------------------------	---

RNAV (GPS) RWY 18

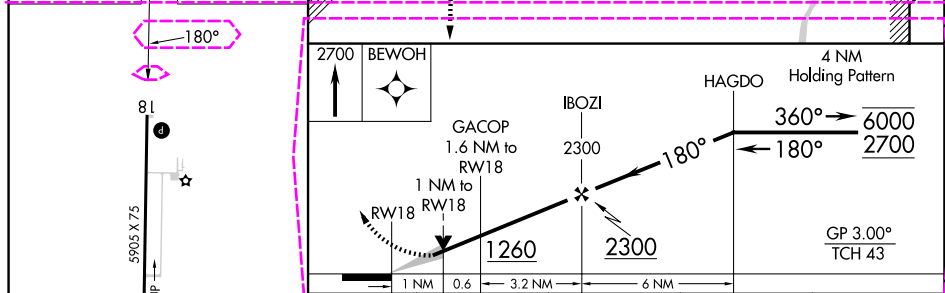
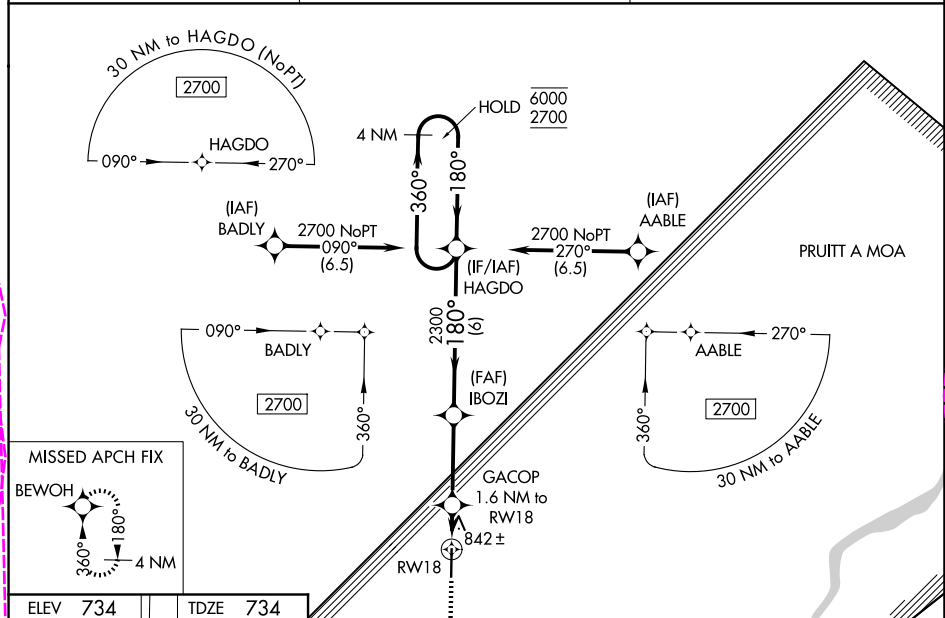
MOUNT STERLING MUNI (I63)

RNP APCH - GPS.

▼ For uncompensated Baro-VNAV systems, LNAV/VNAV NA below -16°C or above 54°C.
▲ Baro-VNAV and VDP NA when using UIN altimeter setting. When local altimeter setting not received, use UIN altimeter setting and increase LPV DA to 1087 feet; increase LNAV/VNAV DA to 1146 feet and all visibilities $\frac{1}{8}$ SM; increase all MDAs 60 feet and LNAV visibility Cat C/D $\frac{1}{4}$ SM, and Circling visibility Cat C/D $\frac{1}{4}$ SM.

MISSED APPROACH: Climb to 2700 direct BEWOH and hold.

AWOS-3PT 118.325	KANSAS CITY CENTER 126.225 317.775	UNICOM 122.8 (CTAF) 0
----------------------------	--	---------------------------------



CATEGORY	A	B	C	D
LPV DA		1041-1	307 (400-1)	
LNAV/VNAV DA		1100-1	366 (400-1)	
LNAV MDA		1100-1	366 (400-1)	
CIRCLING	1160-1 426 (500-1)	1200-1 466 (500-1)	1360-1 ^{3/4} 626 (700-1 ^{3/4})	1360-2 626 (700-2)

MOUNT STERLING, ILLINOIS
Amdt 1 07AUG25

39°59'N-90°48'W

MOUNT STERLING MUNI (I63)
RNAV (GPS) RWY 18

EC-3, 07 AUG 2025 to 04 SEP 2025

EC-3, 07 AUG 2025 to 04 SEP 2025