

DENVER, COLORADO

AL-9077 (FAA)

24361


WAAS CH 82228 W08A	APP CRS 082°	Rwy Idg 12000 TDZE 5354 Apt Elev 5434
--	------------------------	--

RNAV (GPS) Y RWY 8

DENVER INTL (DEN)

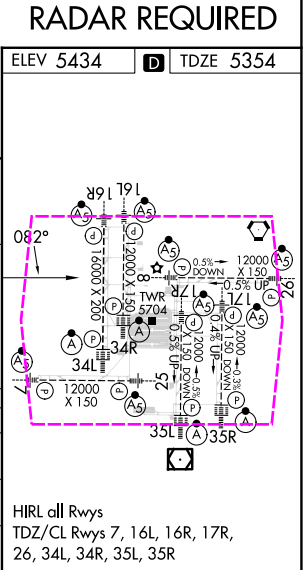
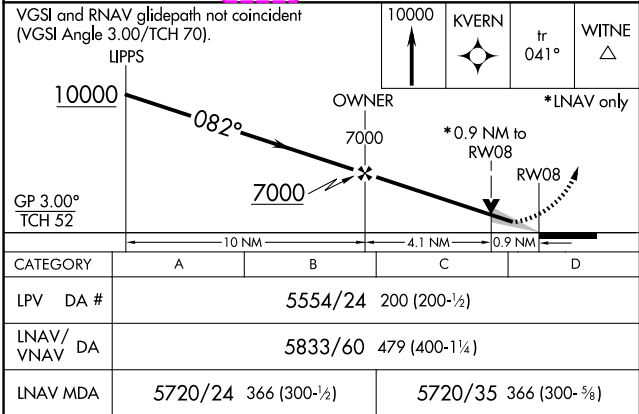
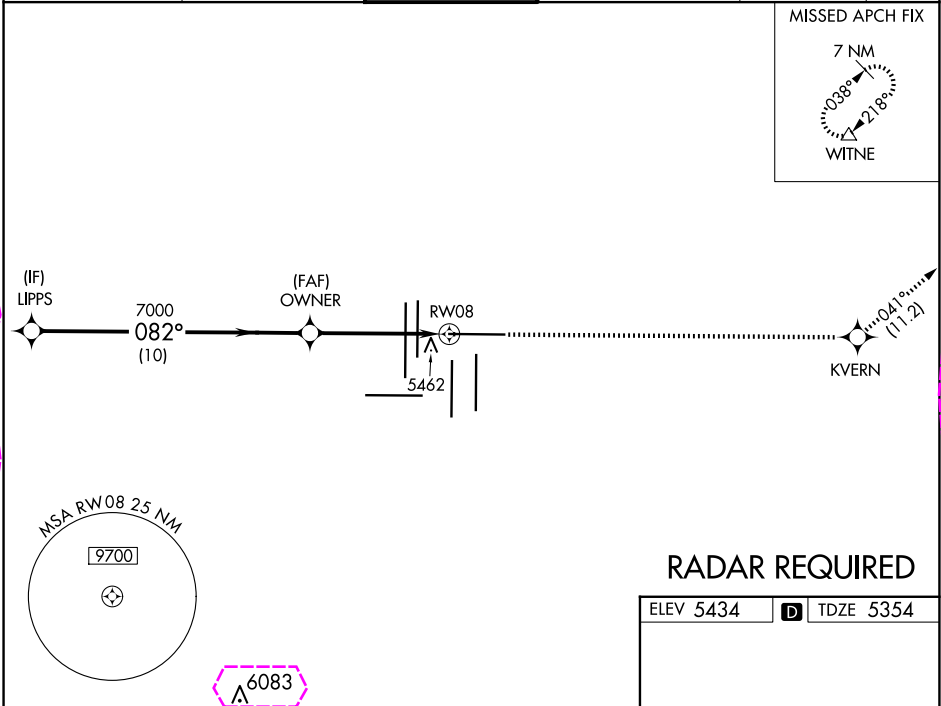
▼ For uncompensated Baro-VNAV systems, LNAV/VNAV NA below -25°C (-13°F) or above 47°C (117°F). Simultaneous approach authorized with Rwy 7.
DME/DME RNP-0.3 NA. LNAV procedure NA during simultaneous operations.
Use of FD or AP providing RNAV track guidance required during simultaneous operations. For inoperative MALSR, increase LNAV Cat C/D visibility to RVR 5500.
RVR 1800 authorized with use of FD or AP or HUD to DA.

MALSR



MISSED APPROACH: Climb to 10000 direct KVERN and on track 041° to WITNE and hold.

D-ATIS 125.6 379.9 (ARR) 134.025 (DEP)	DENVER APP CON 119.3 307.3 (N) 120.35 379.3 (S)	DENVER TOWER 132.35 239.275	GND CON 121.35 379.175 (W) 121.85 377.1 (E)	CLNC DEL 118.75	CPDLC
--	---	---------------------------------------	---	---------------------------	-------



DENVER, COLORADO
Amdt 1C 07DEC17

39°52'N-104°40'W

DENVER INTL (DEN)
RNAV (GPS) Y RWY 8

DENVER, COLORADO

AL-9077 (FAA)

25219

WAAS CH 82228 W08A	APP CRS 082°	Rwy Ldg 12000 TDZE 5354 Apt Elev 5434
--	------------------------	--

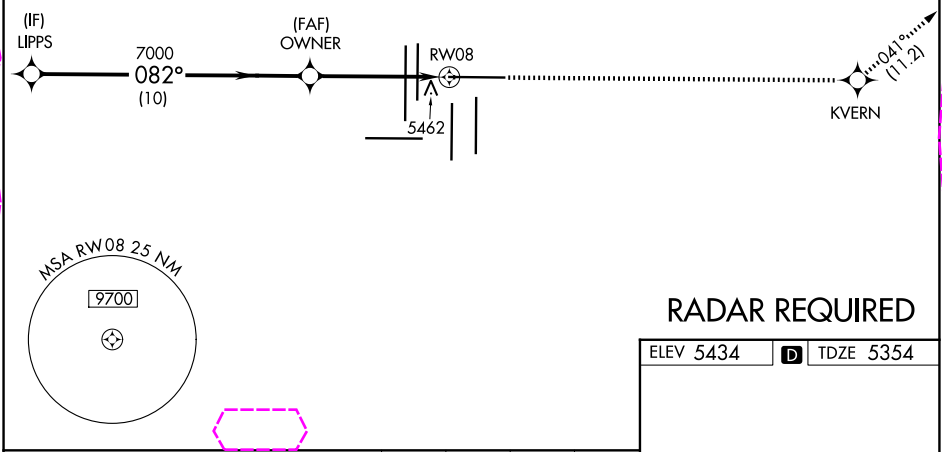
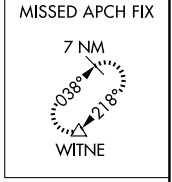
RNAV (GPS) Y RWY 8

DENVER INTL (DEN)

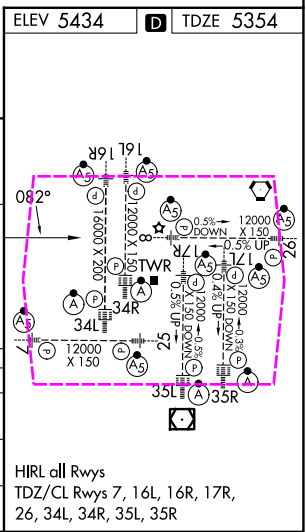
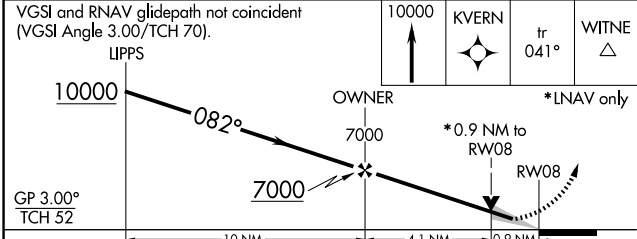
▼ For uncompensated Baro-VNAV systems, LNAV/VNAV NA below -25°C (-13°F) or above 47°C (117°F). Simultaneous approach authorized with Rwy 7.
DME/DME RNP-0.3 NA. LNAV procedure NA during simultaneous operations.
Use of FD or AP providing RNAV track guidance required during simultaneous operations. For inoperative MALSR, increase LNAV Cat C/D visibility to RVR 5500.
RVR 1800 authorized with use of FD or AP or HUD to DA.

MALSR
MISSED APPROACH: Climb to 10000 direct KVERN and on track 041° to WITNE and hold.

D-ATIS 125.6 379.9 (ARR) 134.025 (DEP)	DENVER APP CON 119.3 307.3 (N) 120.35 379.3 (S)	DENVER TOWER 132.35 239.275	GND CON 121.35 379.175 (W) 121.85 377.1 (E)	CLNC DEL 118.75	CPDLC
--	---	---------------------------------------	---	---------------------------	-------



RADAR REQUIRED



CATEGORY	A	B	C	D
LPV DA #	5554/24 200 (200-½)			
LNAV/VNAV DA	5833/60 479 (400-1¼)			
LNAV MDA	5720/24 366 (300-½)		5720/35 366 (300-⅝)	

DENVER, COLORADO
Amdt 1C 07DEC17

39°52'N-104°40'W

DENVER INTL (DEN)
RNAV (GPS) Y RWY 8

SW-1, 07 AUG 2025 to 04 SEP 2025

SW-1, 07 AUG 2025 to 04 SEP 2025