

DENVER, COLORADO

AL-9077 (FAA)

24361

WAAS CH 87128 W07A	APP CRS 082°	Rwy Idg 12000 TDZE 5352 Apt Elev 5434
--	------------------------	--

RNAV (GPS) Y RWY 7

DENVER INTL (DEN)

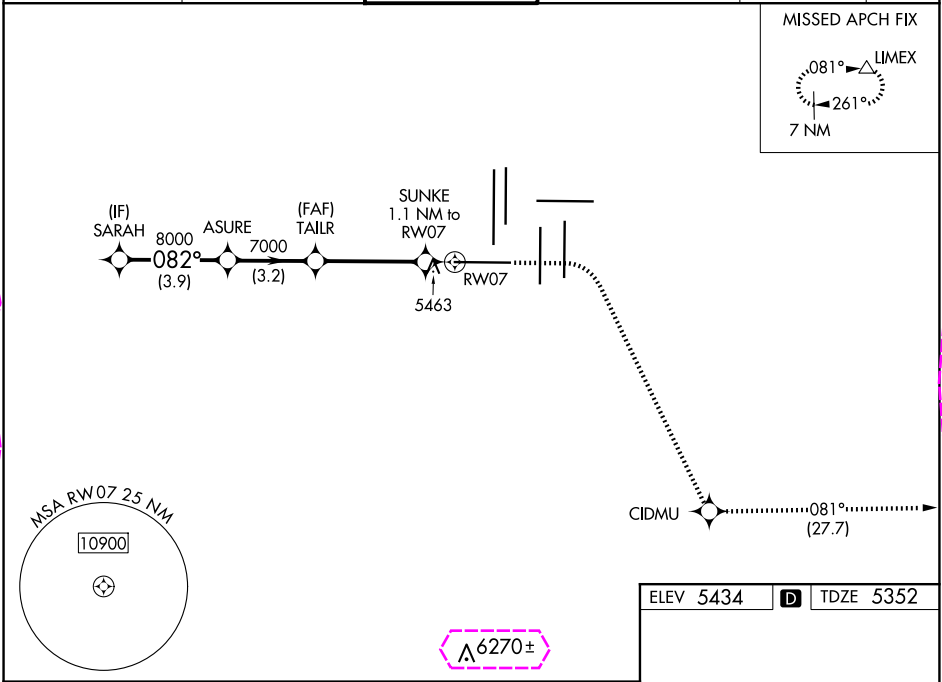
RNP APCH - GPS.

Simultaneous approach authorized. For uncompensated Baro-VNAV systems, LNAV/VNAV NA below -22°C or above 54°C. LNAV procedure NA during simultaneous operations. For inop ALS, increase LNAV/VNAV all Cts visibility to RVR 4500, and LNAV Cat C/D visibility to RVR 5500. Use of FD or AP required during simultaneous operations.

MALSR

MISSED APPROACH: Climb to 5900 then climbing right turn to 10000 direct CIDMU and on track 081° to LIMEX and hold.

D-ATIS 125.6 379.9 (ARR) 134.025 (DEP)	DENVER APP CON 119.3 307.3 (N) 120.35 379.3 (S)	DENVER TOWER 128.75 273.55	GND CON 121.35 379.175 (W) 121.85 377.1 (E)	CLNC DEL 118.75	CPDLC
--	---	--------------------------------------	---	---------------------------	-------



VGSI and RNAV glidepath not coincident (VGSI Angle 3.00/TCH 68).

SARAH ASURE TAILR SUNKE 1.1 NM to RWY 7 RWY 7

9000 8000 7000 5740

GP 3.00° TCH 55

3.9 NM 3.2 NM 4 NM 1.1 NM

CATEGORY A B C D

LPV DA 5552/18 200 (200-½)

LNAV/VNAV DA 5626/24 274 (200-½)

LNAV MDA 5720/24 368 (300-½) 5720/35 368 (300-¾)

ELEV 5434 TDZE 5352

HIRL all Rwws
TDZ/CL Rwws 7, 16L, 16R, 17R, 26, 34L, 34R, 35L, 35R

DENVER, COLORADO
Amdt 2 20APR23

39°52'N-104°40'W

DENVER INTL (DEN)
RNAV (GPS) Y RWY 7

SW-1, 10 JUL 2025 to 07 AUG 2025

SW-1, 10 JUL 2025 to 07 AUG 2025

DENVER, COLORADO

AL-9077 (FAA)

25219

WAAS CH 87128 W07A	APP CRS 082°	Rwy Ldg TDZE 5352 Apt Elev 5434
--	------------------------	---

RNAV (GPS) Y RWY 7

DENVER INTL (DEN)

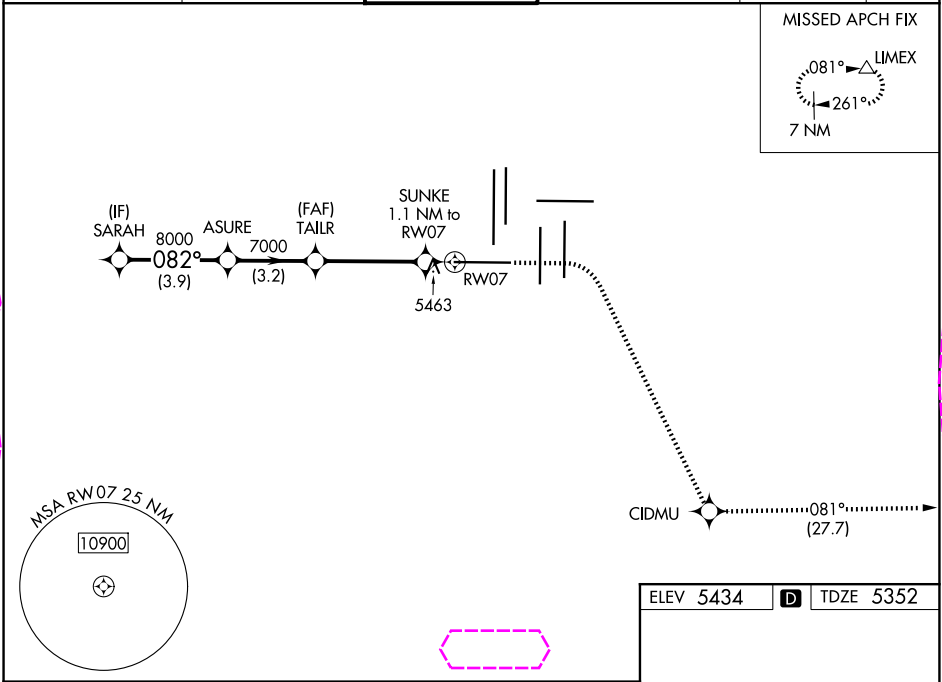
RNP APCH - GPS.

Simultaneous approach authorized. For uncompensated Baro-VNAV systems, LNAV/VNAV NA below -22°C or above 54°C. LNAV procedure NA during simultaneous operations. For inop ALS, increase LNAV/VNAV all Cats visibility to RVR 4500, and LNAV Cat C/D visibility to RVR 5500. Use of FD or AP required during simultaneous operations.

MALSR

MISSED APPROACH: Climb to 5900 then climbing right turn to 10000 direct CIDMU and on track 081° to LIMEX and hold.

D-ATIS 125.6 379.9 (ARR) 134.025 (DEP)	DENVER APP CON 119.3 307.3 (N) 120.35 379.3 (S)	DENVER TOWER 128.75 273.55	GND CON 121.35 379.175 (W) 121.85 377.1 (E)	CLNC DEL 118.75	CPDLC
--	---	--------------------------------------	---	---------------------------	-------



VGSI and RNAV glidepath not coincident (VGSI Angle 3.00/TCH 68).		5900	10000	CIDMU	tr 081°	LIMEX
SARAH		ASURE	TAILR	SUNKE	RWY 7	
9000		8000	7000	5740		
GP 3.00° TCH 55						
3.9 NM		3.2 NM	4 NM	1.1 NM		
CATEGORY	A	B	C	D		
LPV DA	5552/18		200 (200-½)			
LNAV/VNAV DA	5626/24		274 (200-½)			
LNAV MDA	5720/24 368 (300-½)		5720/35 368 (300-¾)			

ELEV 5434 D TDZE 5352

Detailed airport diagram showing taxiways, runways, and navigation aids. Key features include RWY 7, RWY 16L, RWY 16R, RWY 17R, RWY 26, RWY 34L, RWY 34R, RWY 35L, RWY 35R, and various taxiways (A, B, C, D, E, F, G, H, I, J, K, L, M, N, O, P, Q, R, S, T, U, V, W, X, Y, Z).

HIRL all Rwws
TDZ/CL Rwws 7, 16L, 16R, 17R, 26, 34L, 34R, 35L, 35R

SW-1, 07 AUG 2025 to 04 SEP 2025

SW-1, 07 AUG 2025 to 04 SEP 2025