

DENVER, COLORADO

AL-9077 (FAA)

24361

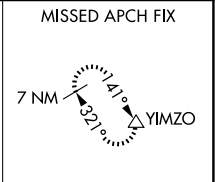
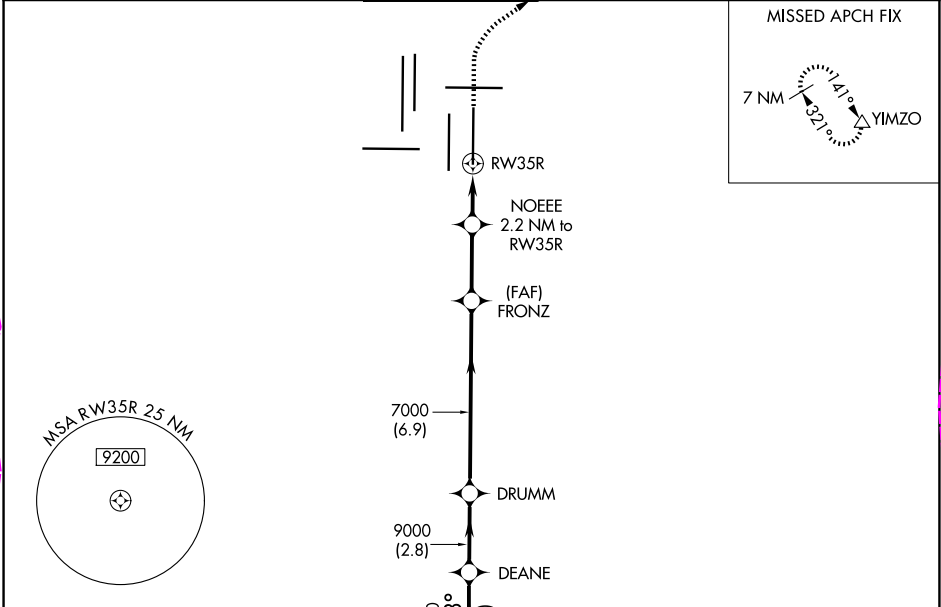
WAAS CH 45719 W35B	APP CRS 353°	Rwy Idg 12000 TDZE 5370 Apt Elev 5434
--	------------------------	--

RNAV (GPS) Y RWY 35R

DENVER INTL (DEN)

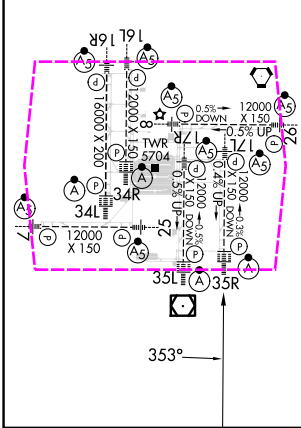
▼ For uncompensated Baro-VNAV systems, LNAV/VNAV NA below -25°C (-13°F) or above 45°C (114°F). DME/DME RNP-0.3 NA. For inoperative ALSF, increase LNAV/VNAV visibility all Cats to RVR 4000. LNAV procedure NA during simultaneous operations. Simultaneous approach authorized with Rwy 34L, Rwy 34R, and Rwy 35L. Use of FD or AP providing RNAV track guidance required during simultaneous operations.	ALSF-2 	MISSED APPROACH: Climb to 5900 then climbing right turn to 8000 direct YIMZO and hold.
--	------------	--

D-ATIS 125.6 379.9 (ARR) 134.025 (DEP)	DENVER APP CON 119.3 307.3 (N) 120.35 379.3 (S)	DENVER TOWER 132.35 239.275	GND CON 121.35 379.175 (W) 121.85 377.1 (E)	CLNC DEL 118.75	CPDLC
--	---	---------------------------------------	---	---------------------------	-------



ELEV 5434	D	TDZE 5370
-----------	---	-----------

HIRL all Rwys
TDZ/CL Rwys 7, 16L, 16R, 17R,
26, 34L, 34R, 35L, 35R



VGSI and RNAV glidepath not coincident (VGSI Angle 3.00/TCH 66).		5900	8000	YIMZO
DORRY DEANE DRUMM		↑	↗	△
9000 — 353° — 9000 — 9000 — 353° — 7000		NOEEE 2.2 NM to RW35R		
GP 3.00° TCH 59		*1.1 NM to RW35R		
— 3.2 NM — 2.8 NM — 6.9 NM — 2.7 NM — 1.1 NM — 1.1 NM —		*6120		
CATEGORY	A	B	C	D
LPV DA	5570/18 200 (200-½)			
LNAV/VNAV DA	5620/24 250 (200-½)			
LNAV MDA	5800/24 430 (400-½)			5800/40 430 (400-¾)

DENVER, COLORADO
Amdt 2B 12OCT17

DENVER INTL (DEN)
39°52'N-104°40'W
RNAV (GPS) Y RWY 35R

SW-1, 10 JUL 2025 to 07 AUG 2025

SW-1, 10 JUL 2025 to 07 AUG 2025

DENVER, COLORADO

AL-9077 (FAA)

25219

WAAS CH 45719 W35B	APP CRS 353°	Rwy Ldg 12000 TDZE 5370 Apt Elev 5434
--	------------------------	--

RNAV (GPS) Y RWY 35R

DENVER INTL (DEN)

▼ For uncompensated Baro-VNAV systems, LNAV/VNAV NA below -25°C (-13°F) or above 45°C (114°F). DME/DME RNP-0.3 NA. For inoperative ALSF, increase LNAV/VNAV visibility all Cats to RVR 4000. LNAV procedure NA during simultaneous operations. Simultaneous approach authorized with Rwy 34L, Rwy 34R, and Rwy 35L. Use of FD or AP providing RNAV track guidance required during simultaneous operations.

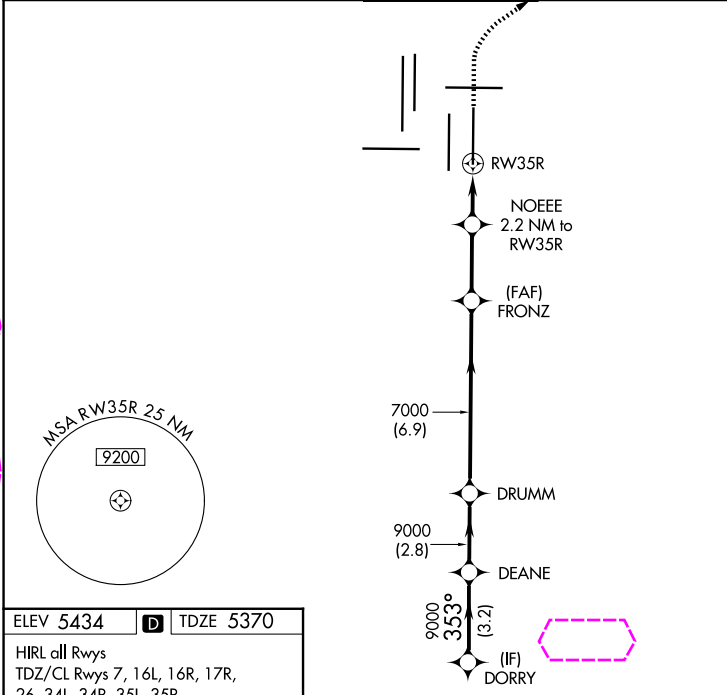
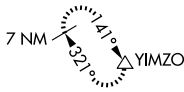
ALSF-2



MISSED APPROACH: Climb to 5900 then climbing right turn to 8000 direct YIMZO and hold.

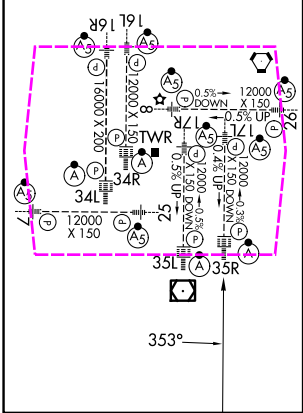
D-ATIS 125.6 379.9 (ARR) 134.025 (DEP)	DENVER APP CON 119.3 307.3 (N) 120.35 379.3 (S)	DENVER TOWER 132.35 239.275	GND CON 121.35 379.175 (W) 121.85 377.1 (E)	CLNC DEL 118.75	CPDLC
--	---	---------------------------------------	---	---------------------------	-------

MISSED APCH FIX



ELEV 5434	D	TDZE 5370
-----------	---	-----------

HIRL all Rwys
TDZ/CL Rwys 7, 16L, 16R, 17R,
26, 34L, 34R, 35L, 35R



VGSI and RNAV glidepath not coincident (VGSI Angle 3.00/TCH 66).				5900	8000	YIMZO	
DORRY DEANE DRUMM				↑	↗	△	
9000	353°	9000	9000	353°	7000	NOEEE 2.2 NM to RW35R	*LNAV only.
GP 3.00° TCH 59				7000	*6120	*1.1 NM to RW35R	RW35R
	3.2 NM	2.8 NM	6.9 NM	2.7 NM	1.1 NM	1.1 NM	
CATEGORY	A	B	C	D			
LPV DA	5570/18 200 (200-½)						
LNAV/ VNAV DA	5620/24 250 (200-½)						
LNAV MDA	5800/24 430 (400-½)					5800/40 430 (400-¾)	

DENVER, COLORADO
Amdt 2B 12OCT17

39°52'N-104°40'W

DENVER INTL (DEN)

RNAV (GPS) Y RWY 35R

SW-1, 07 AUG 2025 to 04 SEP 2025

SW-1, 07 AUG 2025 to 04 SEP 2025