

DENVER, COLORADO

AL-9077 (FAA)

24361

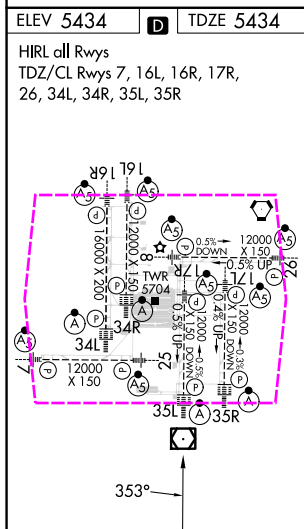
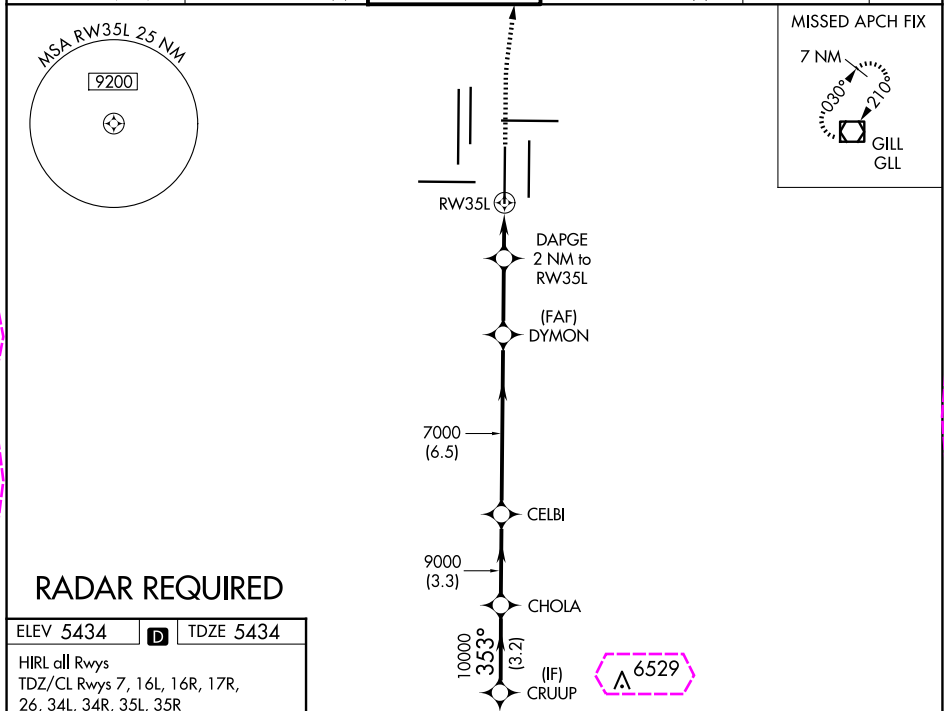
WAAS CH <b>53419</b> <b>W35A</b>	APP CRS <b>353°</b>	Rwy Idg <b>12000</b> TDZE <b>5434</b> Apt Elev <b>5434</b>
--	------------------------	--

# RNAV (GPS) Y RWY 35L

DENVER INTL (DEN)

▼ For uncompensated Baro-VNAV systems, LNAV/VNAV NA below -25°C (-13°F) or above 46°C (115°F). DME/DME RNP-0.3 NA. For inoperative ALSF, increase LNAV/VNAV visibility all Cats to RVR 4000. LNAV procedure NA during simultaneous operations. Simultaneous approach authorized with Rwy 34L, Rwy 34R, and Rwy 35R. Use of FD or AP providing RNAV track guidance required during simultaneous operations.	ALSF-2 	MISSED APPROACH: Climb to 10000 then right turn direct GLL VOR/DME and hold.
--	------------	---

D-ATIS <b>125.6 379.9</b> (ARR) <b>134.025</b> (DEP)	DENVER APP CON <b>119.3 307.3</b> (N) <b>120.35 379.3</b> (S)	DENVER TOWER <b>124.3 322.45</b>	GND CON <b>121.35 379.175</b> (W) <b>121.85 377.1</b> (E)	CLNC DEL <b>118.75</b>	CPDLC
--	---	-------------------------------------	---	---------------------------	-------



CRUUP	VGSI and RNAV glidepath not coincident (VGSI Angle 3.00/TCH 71).			10000	GLL
CHOLA	CELBI	DYMON	DAPGE 2 NM to RW35L	* LNAV only	
11000	353°	10000	9000	7000	*0.9 NM to RW35L
GP 3.00° TCH 57		7000	*6120		RW35L
	3.2 NM	3.3 NM	6.5 NM	2.7 NM	1.1 NM
CATEGORY	A	B	C	D	
LPV DA	5634/18 200 (200-½)				
LNAV/ VNAV DA	5684/24 250 (300-½)				
LNAV MDA	5780/24 346 (400-½)	5780/30 346 (400-¾)			

DENVER, COLORADO  
Amdt 2B 12OCT17

39°52'N-104°40'W

DENVER INTL (DEN)

# RNAV (GPS) Y RWY 35L

SW-1, 10 JUL 2025 to 07 AUG 2025

SW-1, 10 JUL 2025 to 07 AUG 2025

DENVER, COLORADO

AL-9077 (FAA)

25219

WAAS CH <b>53419</b> <b>W35A</b>	APP CRS <b>353°</b>	Rwy Ldg <b>12000</b> TDZE <b>5434</b> Apt Elev <b>5434</b>
--	------------------------	--

# RNAV (GPS) Y RWY 35L

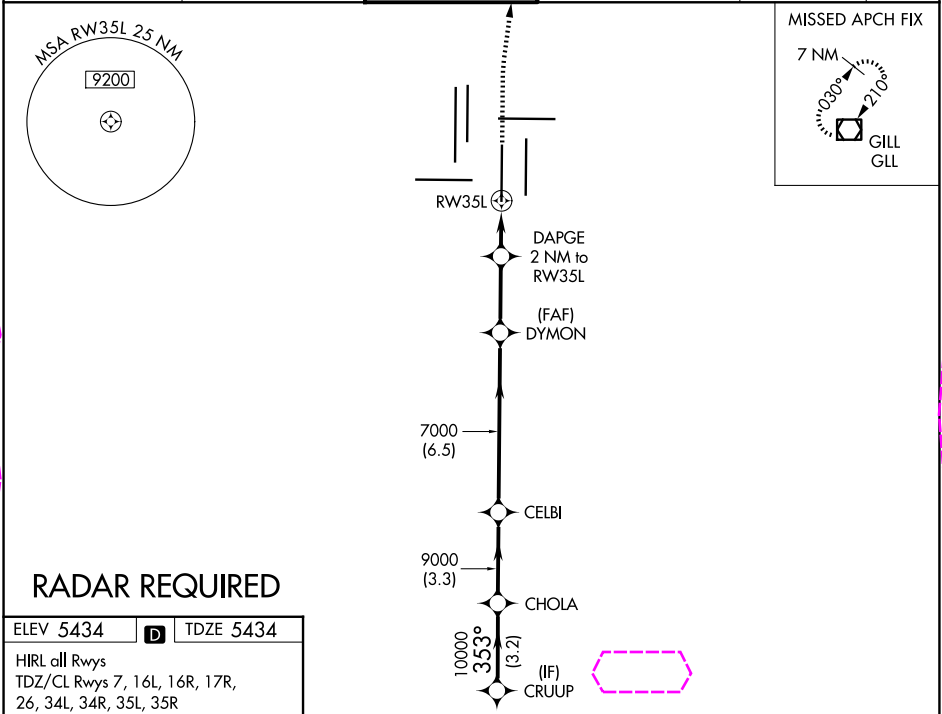
DENVER INTL (DEN)

▼ For uncompensated Baro-VNAV systems, LNAV/VNAV NA below -25°C (-13°F) or above 46°C (115°F). DME/DME RNP-0.3 NA. For inoperative ALSF, increase LNAV/VNAV visibility all Cats to RVR 4000. LNAV procedure NA during simultaneous operations. Simultaneous approach authorized with Rwy 34L, Rwy 34R, and Rwy 35R. Use of FD or AP providing RNAV track guidance required during simultaneous operations.

ALSF-2




MISSED APPROACH:  
Climb to 10000 then right turn direct GLL VOR/DME and hold.

D-ATIS <b>125.6 379.9</b> (ARR) <b>134.025</b> (DEP)	DENVER APP CON <b>119.3 307.3</b> (N) <b>120.35 379.3</b> (S)	DENVER TOWER <b>124.3 322.45</b>	GND CON <b>121.35 379.175</b> (W) <b>121.85 377.1</b> (E)	CLNC DEL <b>118.75</b>	CPDLC
--	---	-------------------------------------	---	---------------------------	-------



ELEV 5434 **D** TDZE 5434

HIRL all Rwys  
TDZ/CL Rwys 7, 16L, 16R, 17R,  
26, 34L, 34R, 35L, 35R

CRUUP	VGSI and RNAV glidepath not coincident (VGSI Angle 3.00/TCH 71).				10000			GLL 	
11000	CHOLA	CELBI	DYMON	DAPGE 2 NM to RW35L	*LNAV only				
353°	10000	9000	7000	7000	*0.9 NM to RW35L	RW35L			
GP 3.00° TCH 57	7000				*6120				
→ 3.2 NM →		→ 3.3 NM →		→ 6.5 NM →		→ 2.7 NM →		→ 1.1 NM →	→ 0.9 NM →
CATEGORY	A		B		C		D		
LPV DA	5634/18 200 (200-½)								
LNAV/ VNAV DA	5684/24 250 (300-½)								
LNAV MDA	5780/24 346 (400-½)		5780/30 346 (400-¾)						

SW-1, 07 AUG 2025 to 04 SEP 2025

SW-1, 07 AUG 2025 to 04 SEP 2025

DENVER, COLORADO  
Amdt 2B 12OCT17

39°52'N-104°40'W

# RNAV (GPS) Y RWY 35L