

DENVER, COLORADO

AL-9077 (FAA)

24361

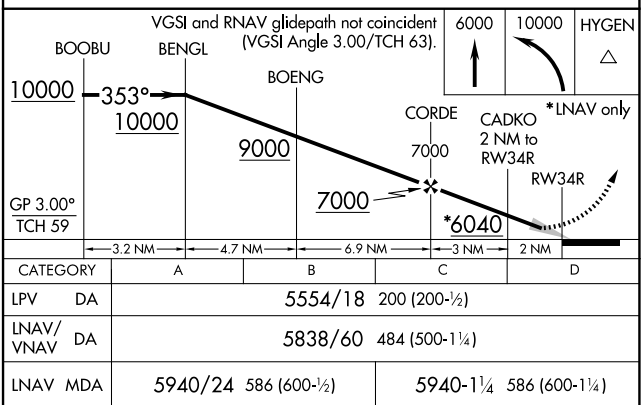
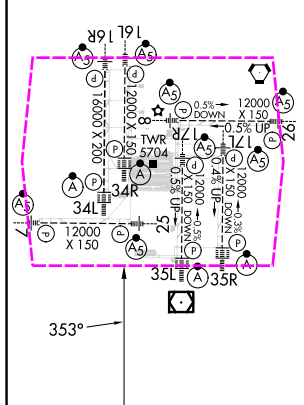
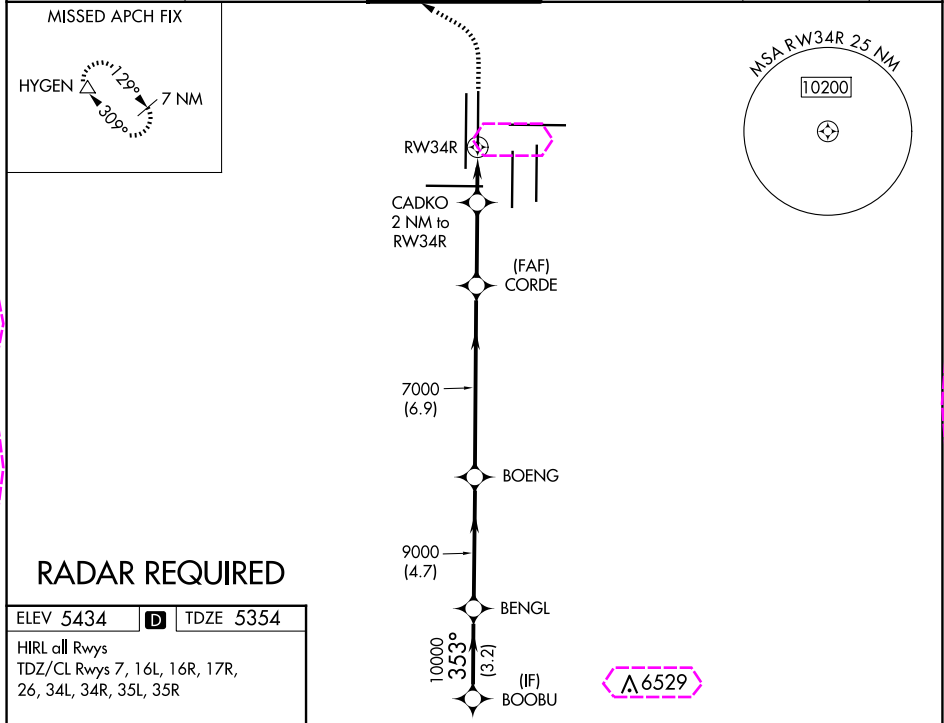
WAAS CH 90318 W34B	APP CRS 353°	Rwy Idg TDZE 5354 Apt Elev 5434
--	------------------------	---

RNAV (GPS) Y RWY 34R

DENVER INTL (DEN)

For uncompensated Baro-VNAV systems, LNAV/VNAV NA below -25°C (-13°F) or above 46°C (114°F). DME/DME RNP-0.3 NA. LNAV procedure NA during simultaneous operations. Simultaneous approach authorized with Rwy 35L/R. Use of FD or AP providing RNAV track guidance required during simultaneous operations.	ALSF-2 	MISSED APPROACH: Climb to 6000 then climbing left turn to 10000 direct HYGEM and hold.
--	------------	--

D-ATIS 125.6 379.9 (ARR) 134.025 (DEP)	DENVER APP CON 119.3 307.3 (N) 120.35 379.3 (S)	DENVER TOWER 135.3 351.95	GND CON 121.35 379.175 (W) 121.85 377.1 (E)	CLNC DEL 118.75	CPDLC
--	---	-------------------------------------	---	---------------------------	-------



DENVER, COLORADO

Amdt 2B 12OCT17

39°52'N-104°40'W

DENVER INTL (DEN)

RNAV (GPS) Y RWY 34R

SW-1, 10 JUL 2025 to 07 AUG 2025

SW-1, 10 JUL 2025 to 07 AUG 2025

DENVER, COLORADO

AL-9077 (FAA)

25219

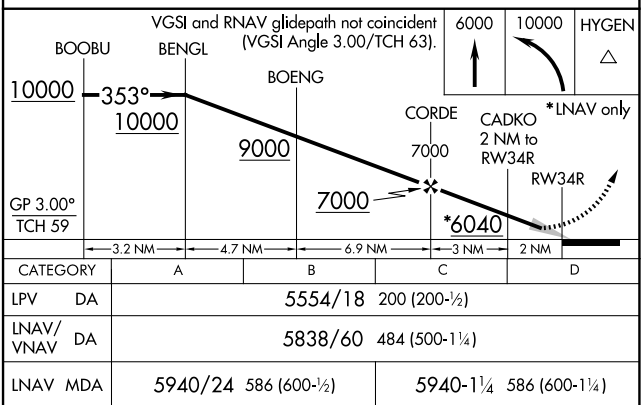
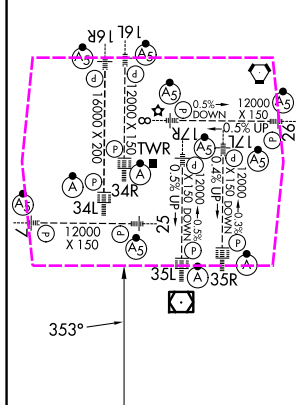
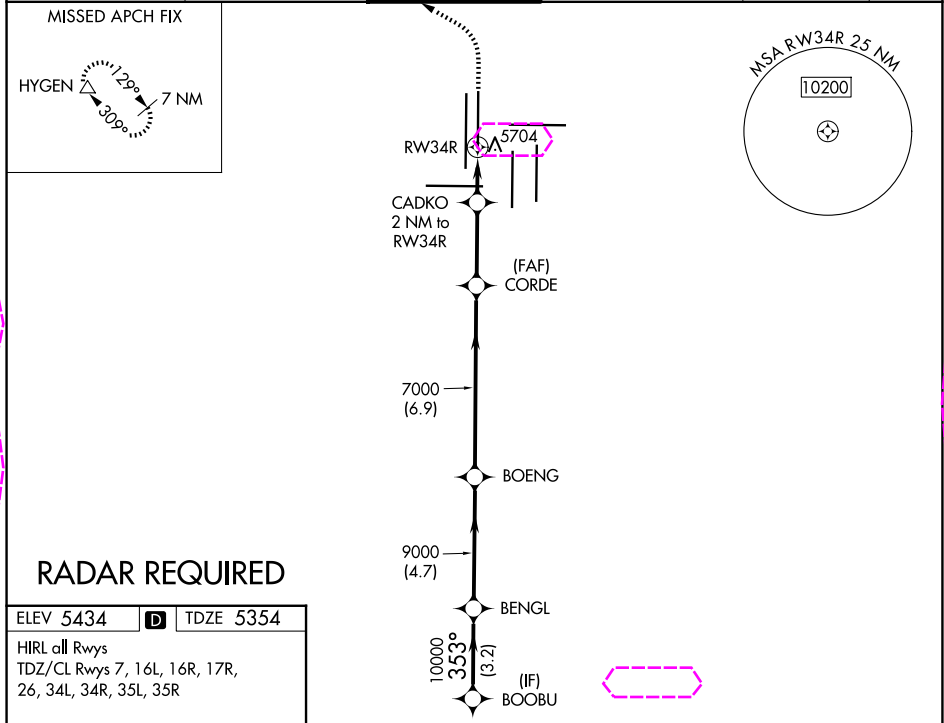
WAAS CH 90318 W34B	APP CRS 353°	Rwy Ldg TDZE 5354 Apt Elev 5434
--	------------------------	---

RNAV (GPS) Y RWY 34R

DENVER INTL (DEN)

▼ For uncompensated Baro-VNAV systems, LNAV/VNAV NA below -25°C (-13°F) or above 46°C (114°F). DME/DME RNP-0.3 NA. LNAV procedure NA during simultaneous operations. Simultaneous approach authorized with Rwy 35L/R. Use of FD or AP providing RNAV track guidance required during simultaneous operations.	ALSF-2 	MISSED APPROACH: Climb to 6000 then climbing left turn to 10000 direct HYGEM and hold.
--	------------	--

D-ATIS 125.6 379.9 (ARR) 134.025 (DEP)	DENVER APP CON 119.3 307.3 (N) 120.35 379.3 (S)	DENVER TOWER 135.3 351.95	GND CON 121.35 379.175 (W) 121.85 377.1 (E)	CLNC DEL 118.75	CPDLC
--	---	-------------------------------------	---	---------------------------	-------



DENVER, COLORADO
Amdt 2B 12OCT17

DENVER INTL (DEN)
39°52'N-104°40'W
RNAV (GPS) Y RWY 34R

SW-1, 07 AUG 2025 to 04 SEP 2025

SW-1, 07 AUG 2025 to 04 SEP 2025