

DENVER, COLORADO

AL-9077 (FAA)

24361

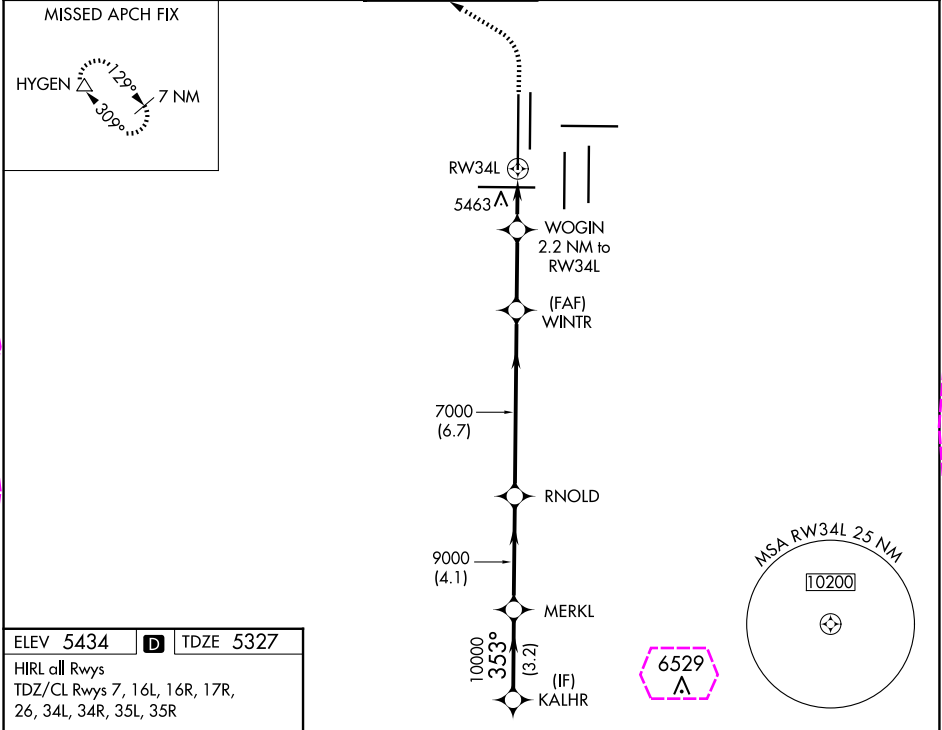
WAAS CH 45619 W34A	APP CRS 353°	Rwy Idg 16000 TDZE 5327 Apt Elev 5434
--	------------------------	--

RNAV (GPS) Y RWY 34L

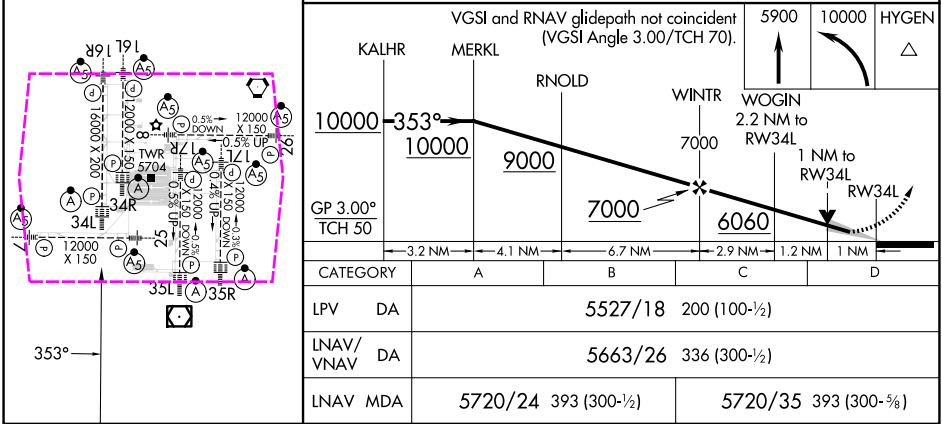
DENVER INTL (DEN)

RNP APCH-GPS. ⚠ LNAV procedure NA during simultaneous operations. Use of FD or AP required during simultaneous operations. Simultaneous approach authorized with Rwy 35L/R. For uncompensated Baro-VNAV systems, LNAV/VNAV NA below -22°C or above 54°C.	ALSF-2 	MISSED APPROACH: Climb to 5900 then climbing left turn to 10000 direct HYGEM and hold.
---	------------	--

D-ATIS 125.6 379.9 (ARR) 134.025 (DEP)	DENVER APP CON 119.3 307.3 (N) 120.35 379.3 (S)	DENVER TOWER 135.3 351.95	GND CON 121.35 379.175 (W) 121.85 377.1 (E)	CLNC DEL 118.75	CPDLC
--	---	-------------------------------------	---	---------------------------	-------



ELEV 5434	D	TDZE 5327
HIRL all Rwys TDZ/CL Rwys 7, 16L, 16R, 17R, 26, 34L, 34R, 35L, 35R		



DENVER, COLORADO
Amdt 2D 07OCT21

39°52'N-104°40'W

DENVER INTL (DEN)

RNAV (GPS) Y RWY 34L

SW-1, 10 JUL 2025 to 07 AUG 2025

SW-1, 10 JUL 2025 to 07 AUG 2025

DENVER, COLORADO

AL-9077 (FAA)

25219

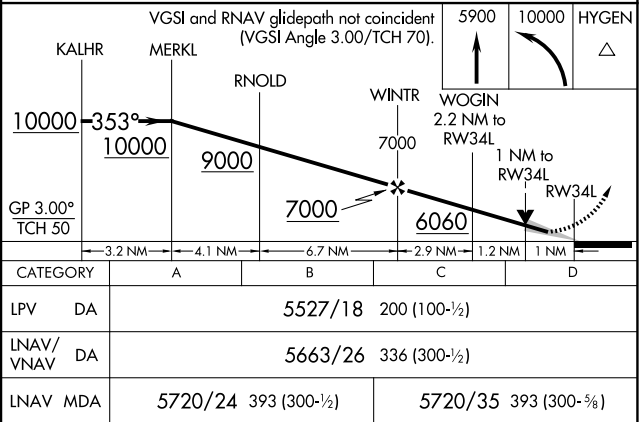
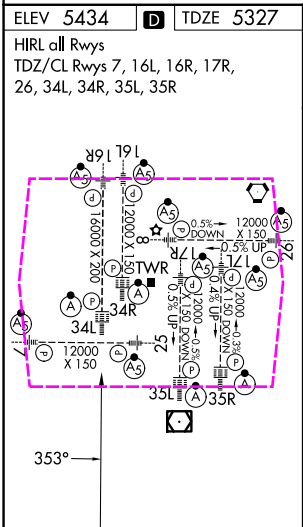
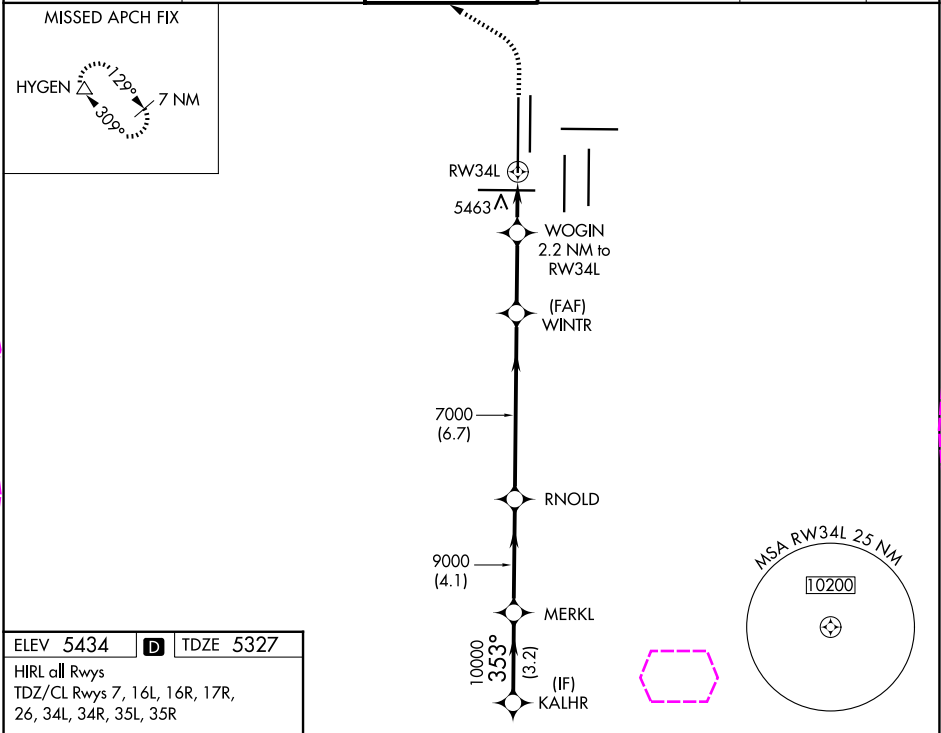
WAAS CH 45619 W34A	APP CRS 353°	Rwy Ldg TDZE 5327 Apt Elev 5434
--	------------------------	---

RNAV (GPS) Y RWY 34L

DENVER INTL (DEN)

RNP APCH-GPS. ⚠ LNAV procedure NA during simultaneous operations. Use of FD or AP required during simultaneous operations. Simultaneous approach authorized with Rwy 35L/R. For uncompensated Baro-VNAV systems, LNAV/VNAV NA below -22°C or above 54°C.	ALSIF-2 	MISSED APPROACH: Climb to 5900 then climbing left turn to 10000 direct HYGEM and hold.
---	-------------	--

D-ATIS 125.6 379.9 (ARR) 134.025 (DEP)	DENVER APP CON 119.3 307.3 (N) 120.35 379.3 (S)	DENVER TOWER 135.3 351.95	GND CON 121.35 379.175 (W) 121.85 377.1 (E)	CLNC DEL 118.75	CPDLC
--	---	-------------------------------------	---	---------------------------	-------



DENVER, COLORADO
Amdt 2D 07OCT21

39°52'N-104°40'W

DENVER INTL (DEN)

RNAV (GPS) Y RWY 34L

SW-1, 07 AUG 2025 to 04 SEP 2025

SW-1, 07 AUG 2025 to 04 SEP 2025