

RNAV (GPS) Y RWY 26

DENVER, COLORADO


AL-9077 (FAA)

25219

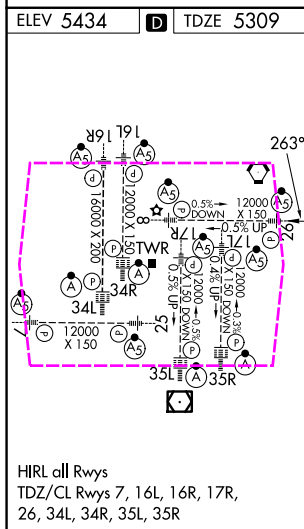
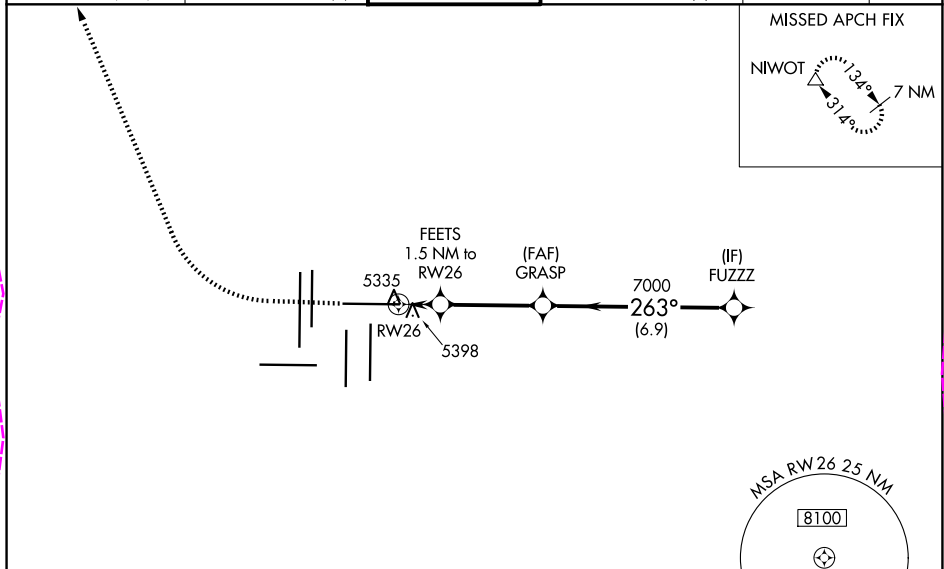
WAAS CH 58128 W26A	APP CRS 263°	Rwy Ldg 12000 TDZE 5309 Apt Elev 5434
--	------------------------	--

RNAV (GPS) Y RWY 26

DENVER INTL (DEN)

RNP APCH. RADAR required. ▼ For uncompensated Baro-VNAV systems, LNAV/VNAV NA below -25°C or above 46°C. Simultaneous approach authorized with Rwy 25. For inoperative ALS, increase LNAV/VNAV all Cats visibility to RVR 4000 and LNAV Cat C/D visibility to RVR 5500. LNAV procedure NA during simultaneous operations. Use of FD or AP providing RNAV track guidance required during simultaneous operations.	MALSR 	MISSED APPROACH: Climb to 6000 then climbing right turn to 11000 direct NIWOT and hold.
--	--	--

D-ATIS 125.6 379.9 (ARR) 134.025 (DEP)	DENVER APP CON 119.3 307.3 (N) 120.35 379.3 (S)	DENVER TOWER 132.35 239.275	GND CON 121.35 379.175 (W) 121.85 377.1 (E)	CLNC DEL 118.75	CPDLC
--	---	---------------------------------------	---	---------------------------	-------



ELEV 5434	D	TDZE 5309
6000	11000	NIWOT
VGSI and RNAV glidepath not coincident (VGSI Angle 3.00/TCH 70).		
* LNAV only		
FEETS 1.5 NM to RW26		
* 1 NM to RW26		
FUZZ		
GRASP		
7000		
263°		
9000		
GP 3.00°		
TCH 55		
5820*		
1 NM 0.5 NM 3.7 NM 6.9 NM		
CATEGORY	A	B
LPV DA	5509/18	200 (100-½)
LNAV/VNAV DA	5559/24	250 (200-½)
LNAV MDA	5660/24	351 (300-½)
		5660/30
		351 (300-¾)

DENVER, COLORADO

Amdt 1C 03JAN19

39°52'N-104°40'W

DENVER INTL (DEN)

RNAV (GPS) Y RWY 26

SW-1, 07 AUG 2025 to 04 SEP 2025

SW-1, 07 AUG 2025 to 04 SEP 2025