

DENVER, COLORADO

AL-9077 (FAA)


24361

WAAS CH 40428 W25A	APP CRS 263°	Rwy Idg 12000 TDZE 5355 Apt Elev 5434
--	------------------------	--

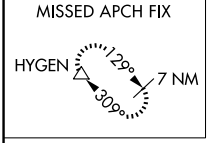
RNAV (GPS) Y RWY 25

DENVER INTL (DEN)

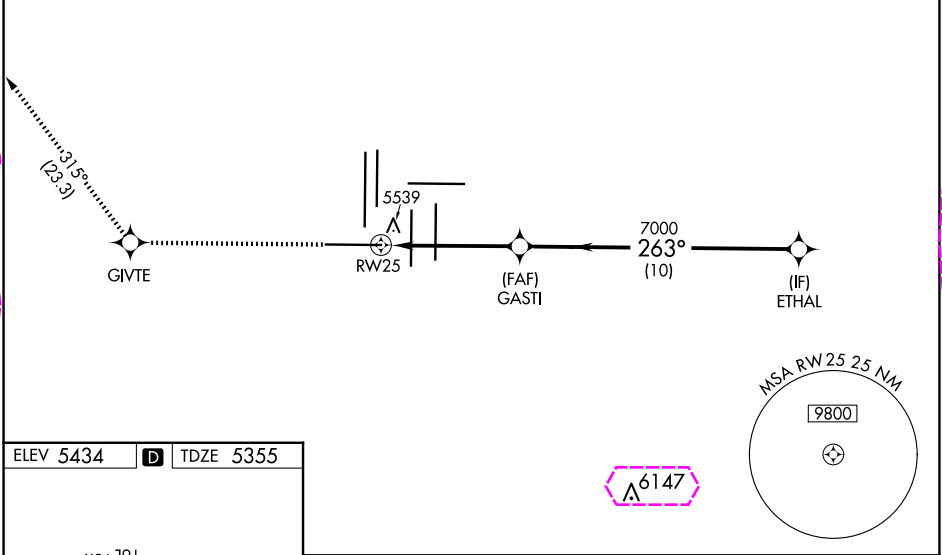
▼ For uncompensated Baro-VNAV systems, LNAV/VNAV NA below -25°C (-13°F) or above 46°C (116°F). Simultaneous approach authorized with Rwy 26. DME/DME RNP-0.3 NA. Use of FD or AP providing track guidance required during simultaneous operations. LNAV procedure NA during simultaneous operations. For inoperative MALSR, increase LNAV/VNAV all Cats visibility to RVR 4500. #RVR 1800 authorized with use of FD or AP or HUD to DA.

MALSR  MISSED APPROACH: Climb to 10000 direct GIVTE and on track 315° to HYGEN and hold.

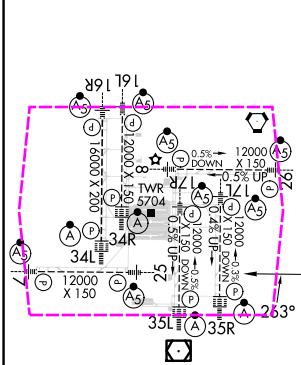
D-ATIS 125.6 379.9 (ARR) 134.025 (DEP)	DENVER APP CON 119.3 307.3 (N) 120.35 379.3 (S)	DENVER TOWER 128.75 273.55	GND CON 121.35 379.175 (W) 121.85 377.1 (E)	CLNC DEL 118.75	CPDLC
--	---	--------------------------------------	---	---------------------------	-------



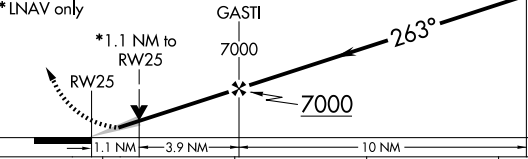
RADAR REQUIRED



ELEV 5434	D	TDZE 5355
-----------	----------	-----------



HIRL all Rwys
TDZ/CL Rwys 7, 16L, 16R, 17R,
26, 34L, 34R, 35L, 35R

10000	GIVTE	tr 315°	HYGEN	VGSI and RNAV glidepath not coincident (VGSI Angle 3.00/TCH 83).	ETHAL
					
CATEGORY	A	B	C	D	
LPV DA#	5555/24 200 (200-½)				
LNAV/VNAV DA	5700/30 345 (300-⅝)				
LNAV MDA	5800/24 445 (400-½)		5800/45 445 (400-⅞)		

DENVER, COLORADO

Amdt 1B 07DEC17

39°52'N-104°40'W

DENVER INTL (DEN)

RNAV (GPS) Y RWY 25

SW-1, 10 JUL 2025 to 07 AUG 2025

SW-1, 10 JUL 2025 to 07 AUG 2025

DENVER, COLORADO

AL-9077 (FAA)

25219


WAAS CH 40428 W25A	APP CRS 263°	Rwy Ldg 12000 TDZE 5355 Apt Elev 5434
--	------------------------	--

RNAV (GPS) Y RWY 25

DENVER INTL (DEN)

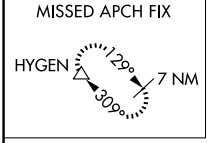
▼ For uncompensated Baro-VNAV systems, LNAV/VNAV NA below -25°C (-13°F) or above 46°C (116°F). Simultaneous approach authorized with Rwy 26. DME/DME RNP-0.3 NA. Use of FD or AP providing track guidance required during simultaneous operations. LNAV procedure NA during simultaneous operations. For inoperative MALSR, increase LNAV/VNAV all Cats visibility to RVR 4500. #RVR 1800 authorized with use of FD or AP or HUD to DA.

MALSR

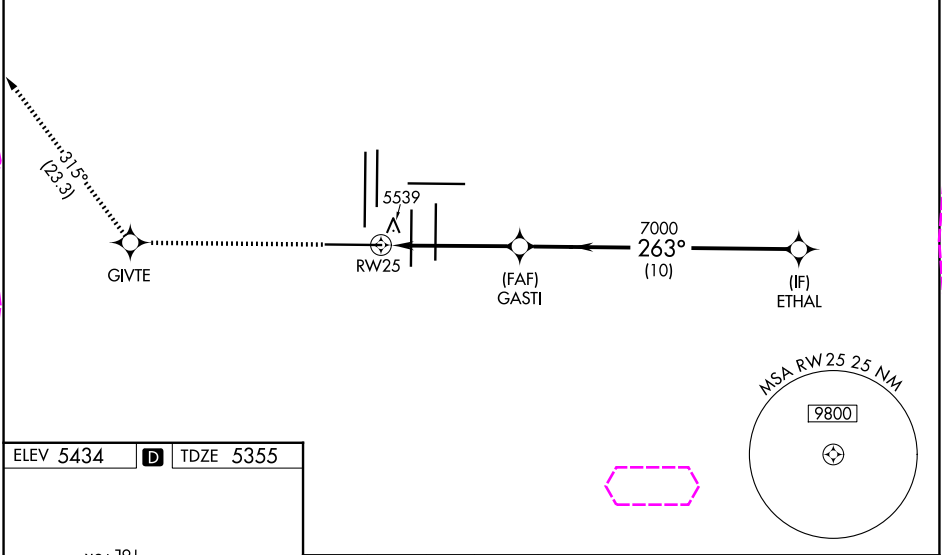


MISSED APPROACH: Climb to 10000 direct GIVTE and on track 315° to HYGEN and hold.

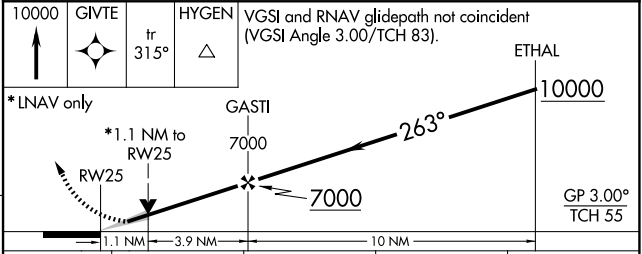
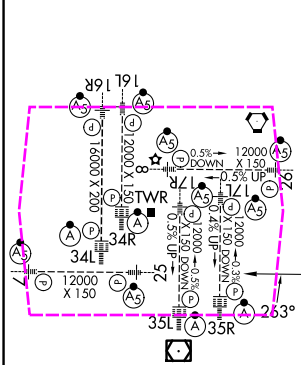
D-ATIS 125.6 379.9 (ARR) 134.025 (DEP)	DENVER APP CON 119.3 307.3 (N) 120.35 379.3 (S)	DENVER TOWER 128.75 273.55	GND CON 121.35 379.175 (W) 121.85 377.1 (E)	CLNC DEL 118.75	CPDLC
--	---	--------------------------------------	---	---------------------------	-------



RADAR REQUIRED



ELEV 5434	D	TDZE 5355
-----------	----------	-----------



CATEGORY	A	B	C	D
LPV DA#	5555/24 200 (200-½)			
LNAV/VNAV DA	5700/30 345 (300-⅝)			
LNAV MDA	5800/24 445 (400-½)		5800/45 445 (400-⅞)	

DENVER, COLORADO

Amdt 1B 07DEC17

39°52'N-104°40'W

DENVER INTL (DEN)

RNAV (GPS) Y RWY 25

SW-1, 07 AUG 2025 to 04 SEP 2025

SW-1, 07 AUG 2025 to 04 SEP 2025