



DENVER, COLORADO


AL-9077 (FAA)

25219

|  |                        |  |
|--|------------------------|--|
| WAAS<br>CH <b>93529</b><br><b>W17B</b> | APP CRS<br><b>173°</b> | Rwy Ldg <b>12000</b><br>TDZE <b>5392</b><br>Apt Elev <b>5434</b> |
|--|------------------------|--|

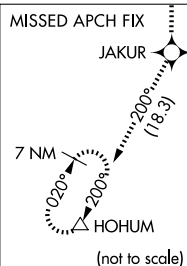
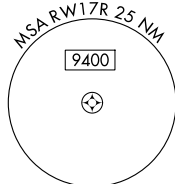
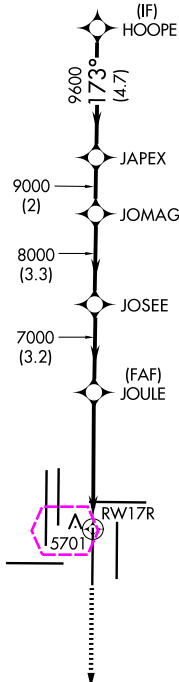
# RNAV (GPS) Y RWY 17R

DENVER INTL (DEN)

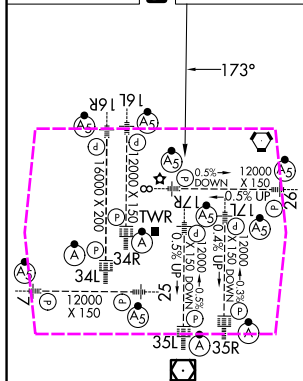
|  |  |  |
|--|--|--|
| <b>▼</b> For uncompensated Baro-VNAV systems, LNAV/VNAV NA below -25°C (-13°F) or above 46°C (116°F). Simultaneous approach authorized with Rwy 16L/16R and 17L. DME/DME RNP-0.3 NA. For inoperative MALSR, increase LNAV/VNAV all Cats visibility to 1½ mile, and LNAV Cat C/D to 1½ mile. LNAV procedure NA during simultaneous operations. Use of FD or AP providing RNAV track guidance required during simultaneous operations. | MALSR<br> | MISSED APPROACH:<br>Climb to 10000 direct JAKUR and on track 200° to HOHUM and hold. |
|--|--|--|

|  |   |                                     |   |                           |       |
|--|---|-------------------------------------|---|---------------------------|-------|
| D-ATIS<br><b>125.6 379.9</b> (ARR)<br><b>134.025</b> (DEP) | DENVER APP CON<br><b>119.3 307.3</b> (N)<br><b>120.35 379.3</b> (S) | DENVER TOWER<br><b>124.3 322.45</b> | GND CON<br><b>121.35 379.175</b> (W)<br><b>121.85 377.1</b> (E) | CINC DEL<br><b>118.75</b> | CPDLC |
|--|---|-------------------------------------|---|---------------------------|-------|

## RADAR REQUIRED



|           |          |           |
|-----------|----------|-----------|
| ELEV 5434 | <b>D</b> | TDZE 5392 |
|-----------|----------|-----------|



HIRL all Rwys  
TDZ/CL Rwys 7, 16L, 16R, 17R,  
26, 34L, 34R, 35L, 35R

|                  |            |         |             |   |               |               |               |                    |
|------------------|------------|---------|-------------|---|---------------|---------------|---------------|--------------------|
| 10000<br>↑       | JAKUR<br>✱ | tr 200° | HOHUM<br>△  | VGS1 and RNAV glidepath not coincident<br>(VGS1 Angle 3.00/TCH 69). |               |               |               | HOOPE              |
| *LNAV only       |            |         |             | JOULE<br>7000   | JOSEE<br>8000 | JOMAG<br>9000 | JAPEX<br>9600 | 11000              |
| *1.6 NM to RW17R |            |         |             | 173°  |               |               |               | GP 3.00°<br>TCH 60 |
| RW17R            |            |         |             | 7000  | 8000          | 9000          | 9600          |                    |
| 1.6              |            |         |             | 3.3 NM  | 3.2 NM        | 3.3 NM        | 2 NM          | 4.7 NM             |
| CATEGORY         |            | A       |             | B   |               | C             |               | D                  |
| LPV              | DA         | 5592/18 |             | 200 (200-½)   |               |               |               |                    |
| LNAV/<br>VNAV    | DA         | 5857/60 |             | 465 (500-1¼)  |               |               |               |                    |
| LNAV             | MDA        | 5940/24 | 548 (600-½) | 5940-1¼   |               | 548 (600-1¼)  |               |                    |

DENVER, COLORADO

Amdt 1C 12OCT17

39°52'N-104°40'W

DENVER INTL (DEN)

# RNAV (GPS) Y RWY 17R

SW-1, 07 AUG 2025 to 04 SEP 2025

SW-1, 07 AUG 2025 to 04 SEP 2025