

DENVER, COLORADO

AL-9077 (FAA)

24361

| | | |
|--|------------------------|--|
| WAAS CH 81830 W17A | APP CRS 173° | Rwy Idg 12000 TDZE 5339 Apt Elev 5434 |
|--|------------------------|--|

RNAV (GPS) Y RWY 17L

DENVER INTL (DEN)

▼ For uncompensated Baro-VNAV systems, LNAV/VNAV NA below -25°C (-13°F) or above 48°C (119°F). DME/DME RNP-0.3 NA. LNAV procedure NA during simultaneous operations. For inoperative MALS/R increase LNAV Cats C/D visibility to RVR 5500. Use of FD or AP providing RNAV track guidance required during simultaneous operations. Simultaneous approach authorized with Rwy 16L/16R and 17R.
RVR 1800 authorized with use of FD or AP or HUD to DA.

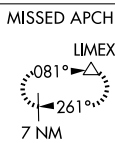
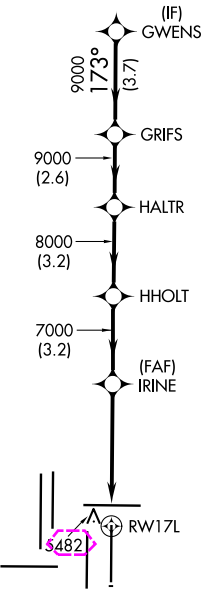
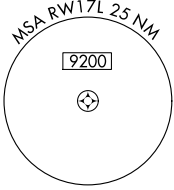
MALS/R

MISSED APPROACH:
Climb to 5900 then climbing left turn to 10000 direct LIMEX and hold.

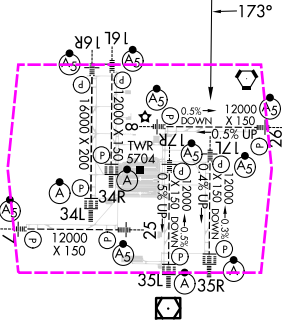
| | | | | | |
|--|---|---------------------------------------|---|---------------------------|-------|
| D-ATIS 125.6 379.9 (ARR) 134.025 (DEP) | DENVER APP CON 119.3 307.3 (N) 120.35 379.3 (S) | DENVER TOWER 132.35 239.275 | GND CON 121.35 379.175 (W) 121.85 377.1 (E) | CLNC DEL 118.75 | CPDLC |
|--|---|---------------------------------------|---|---------------------------|-------|

RADAR REQUIRED

Λ 6260



| | | |
|-----------|---|-----------|
| ELEV 5434 | D | TDZE 5339 |
|-----------|---|-----------|



| | | | | | | | | |
|---------------|-------|---------------------|---|-------|---------------------|-------|-------|--------------------|
| 5900 | 10000 | LIMEX △ | VGSI and RNAV glidepath not coincident (VGSI Angle 3.00/TCH 66). | | | | | |
| | | | | | | | | |
| *LNAV only | | | IRINE | HHOLT | HALTR | GRIFS | GWENS | |
| | | | 7000 | 8000 | 9000 | 9000 | 9000 | |
| | | | | | | | | GP 3.00° TCH 48 |
| CATEGORY | | | A | B | C | D | | |
| LPV | DA# | 5539/24 200 (200-½) | | | | | | |
| LNAV/ VNAV | DA | 5648/24 309 (300-½) | | | | | | |
| LNAV | MDA | 5700/24 361 (300-½) | | | 5700/35 361 (300-½) | | | |

HIRL all Rwys
TDZ/CL Rwys 7, 16L, 16R, 17R,
26, 34L, 34R, 35L, 35R

SW-1, 10 JUL 2025 to 07 AUG 2025

SW-1, 10 JUL 2025 to 07 AUG 2025

RNAV (GPS) Y RWY 17L
DENVER INTL (DEN)

DENVER INTL (DEN)

▼ For uncompensated Baro-VNAV systems, LNAV/VNAV NA below -25°C (-13°F) or above 48°C (119°F). DME/DME RNP-0.3 NA. LNAV procedure NA during simultaneous operations. For inoperative MALSR increase LNAV Cats C/D visibility to RVR 5500. Use of FD or AP providing RNAV track guidance required during simultaneous operations. Simultaneous approach authorized with Rwy 16L/16R and 17R.
RVR 1800 authorized with use of FD or AP or HUD to DA.

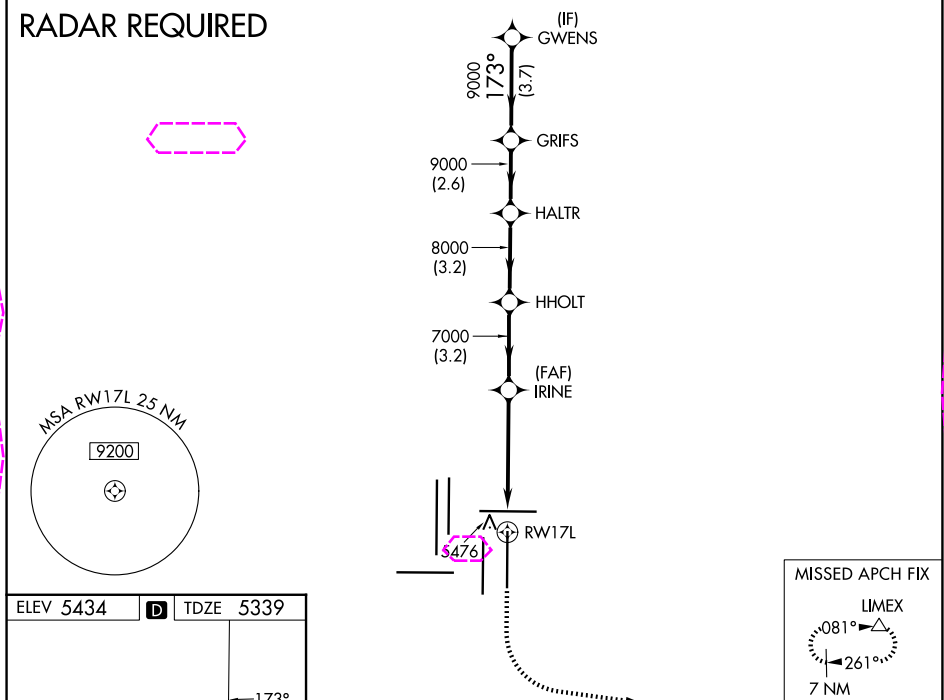
MAISR



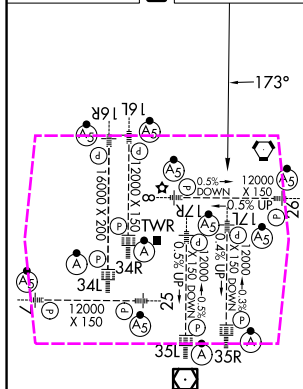
MISSED APPROACH:
Climb to 5900 then
climbing left turn to
10000 direct LIMEX
and hold.

| | | | | | |
|--------------------------|-------------------------|-----------------------|---------------------------|---------------|-------|
| D-ATIS | DENVER APP CON | DENVER TOWER | GND CON | CLNC DEL | CPDLC |
| 125.6 379.9 (ARR) | 119.3 307.3 (N) | | 121.35 379.175 (W) | | |
| 134.025 (DEP) | 120.35 379.3 (S) | 132.35 239.275 | 121.85 377.1 (E) | 118.75 | |

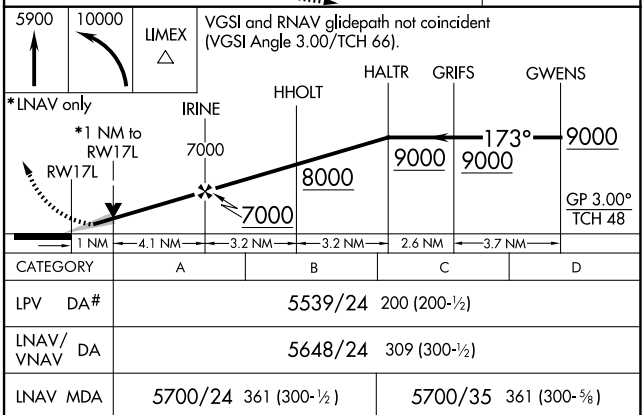
RADAR REQUIRED



| | | |
|-----------|----------|-----------|
| ELEV 5434 | D | TDZE 5339 |
|-----------|----------|-----------|



HIRL all Rwy's
TDZ/CL Rwy's 7, 16L, 16R, 17R,
26, 34L, 34R, 35L, 35R



DENVER, COLORADO

Amdt 1B 07DEC17

DENVER INTL (DEN)

39°52'N-104°40'W

RNAV (GPS) Y RWY 17L