

RNAV (GPS) Y RWY 16R
DENVER INTL (DEN)

WAAS CH 53546 W16B	APP CRS 170°	Rwy Idg 16000 TDZE 5326 Apt Elev 5434
--	------------------------	--

RNP APCH - GPS.

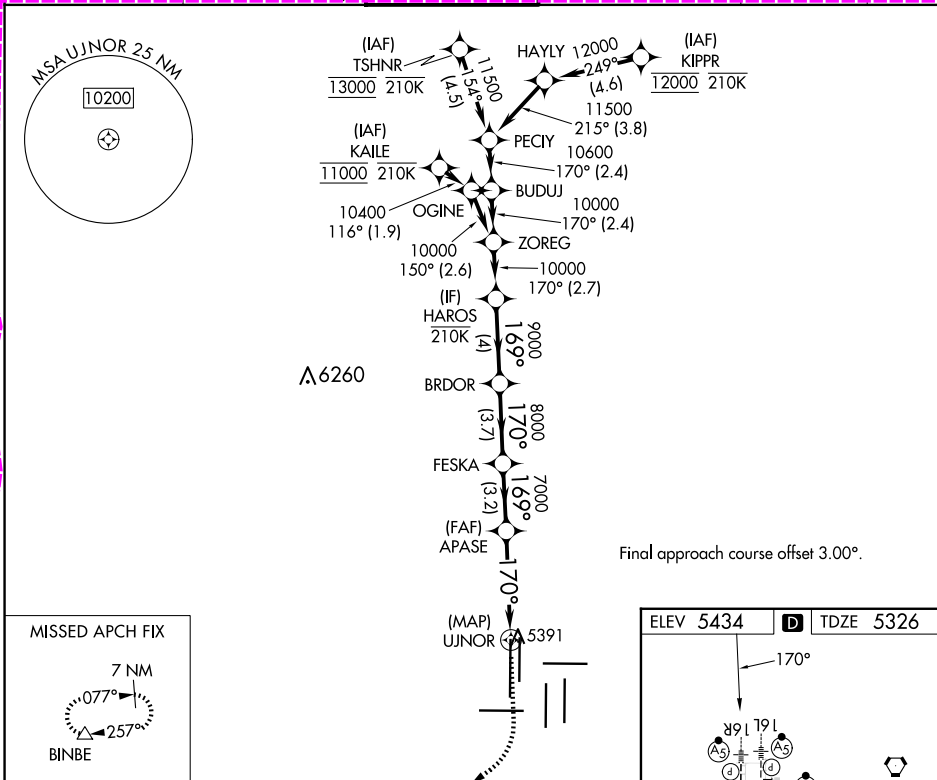
T LNAV procedure NA during simultaneous operations. For uncompensated Baro-VNAV systems, LNAV/VNAV NA below -24°C or above 54°C. Use of FD or AP required during simultaneous operations. For inop ALS, increase LNAV/VNAV all Cats visibility to RVR 4000. Simultaneous approach authorized.

MALSR

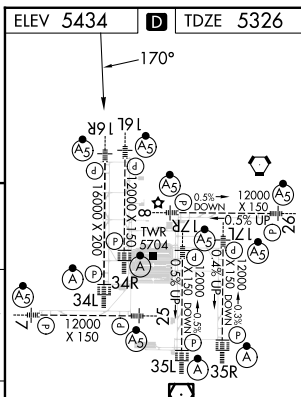


MISSED APPROACH: Climb to 5900, then climbing right turn to 10000 direct BINBE and hold, continue climb-in-hold to 10000.

D-ATIS	DENVER APP CON	DENVER TOWER	GND CON	CLNC DEL	CPDLC
125.6 379.9 (ARR)	119.3 307.3 (N)		121.35 379.175 (W)		
134.025 (DEP)	120.35 379.3 (S)	135.3 351.95	121.85 377.1 (E)	118.75	

[illegible]

CATEGORY	A	B	C	D
LPV DA		5576/24	250 (200-½)	
LNAV/ VNAV DA		5582/24	256 (200-½)	
LNAV MDA	5660/24	334 (300-½)	5660/26	334 (300-½)



DENVER, COLORADO

Amdt 1 21MAR24

39°52'N-104°40'W

DENVER INTL (DEN)

RNAV (GPS) Y RWY 16R

SW-1, 10 JUL 2025 to 07 AUG 2025

DENVER, COLORADO

AL-9077 (FAA)

25219

WAAS CH 53546 W16B	APP CRS 170°	Rwy Ldg TDZE 5326 Apt Elev 5434
--	------------------------	---

RNAV (GPS) Y RWY 16R

DENVER INTL (DEN)

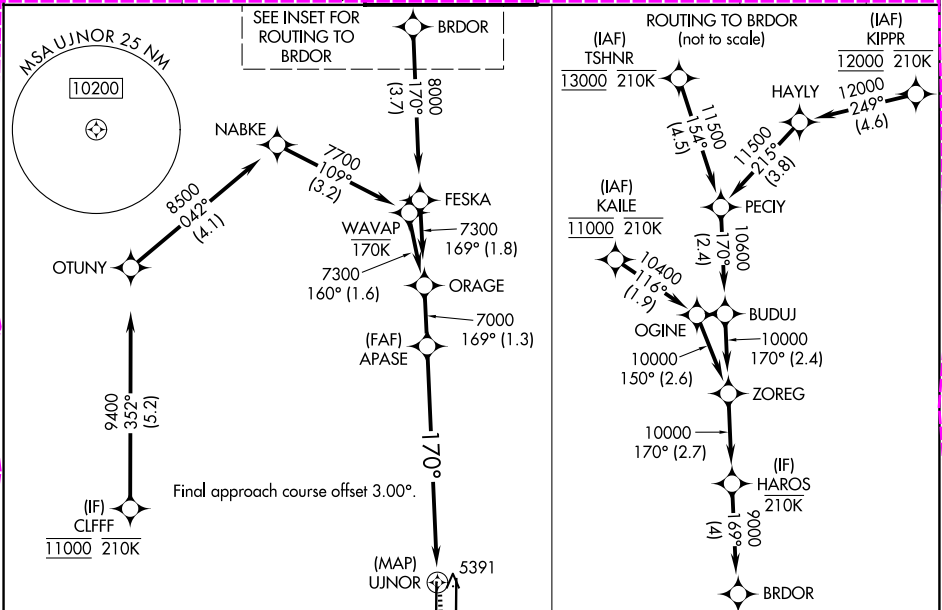
RNP APCH - GPS.

⚠ LNAV procedure NA during simultaneous operations. For uncompensated Baro-VNAV systems, LNAV/VNAV NA below -25°C or above 54°C. Use of FD or AP required during simultaneous operations. For inop ALS, increase LNAV/VNAV all Cais visibility to RVR 4000. Simultaneous approach authorized.

MALSR

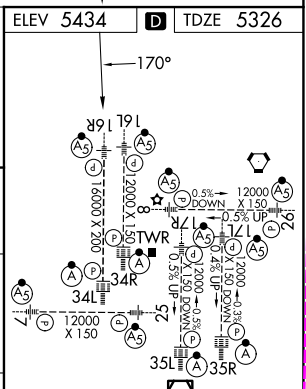
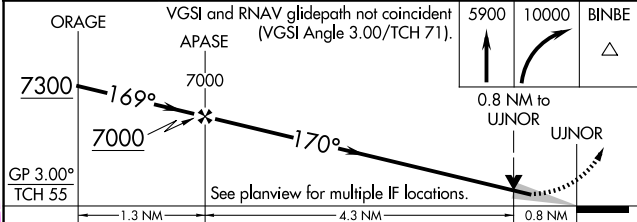
MISSED APPROACH: Climb to 5900 then climbing right turn to 10000 direct BINBE and hold, continue climb-in-hold to 10000.

D-ATIS 125.6 379.9 (ARR) 134.025 (DEP)	DENVER APP CON 119.3 307.3 (N) 120.35 379.3 (S)	DENVER TOWER 135.3 351.95	GND CON 121.35 379.175 (W) 121.85 377.1 (E)	CLNC DEL 118.75	CPDLC
--	---	-------------------------------------	---	---------------------------	-------



MISSED APCH FIX

BINBE



CATEGORY	A	B	C	D
LPV DA	5576/24 250 (200-½)			
LNAV/VNAV DA	5582/24 256 (200-½)			
LNAV MDA	5660/24 334 (300-½) 5660/26 334 (300-½)			

DENVER, COLORADO

DENVER INTL (DEN)

Ampl 2 07AUG25

39°52'N-104°40'W

RNAV (GPS) Y RWY 16R

SW-1, 07 AUG 2025 to 04 SEP 2025

SW-1, 07 AUG 2025 to 04 SEP 2025