

DENVER, COLORADO

AL-9077 (FAA)

24361


WAAS CH 99307 W16A	APP CRS 173°	Rwy Idg 12000 TDZE 5357 Apt Elev 5434
--	------------------------	--

RNAV (GPS) Y RWY 16L

DENVER INTL (DEN)

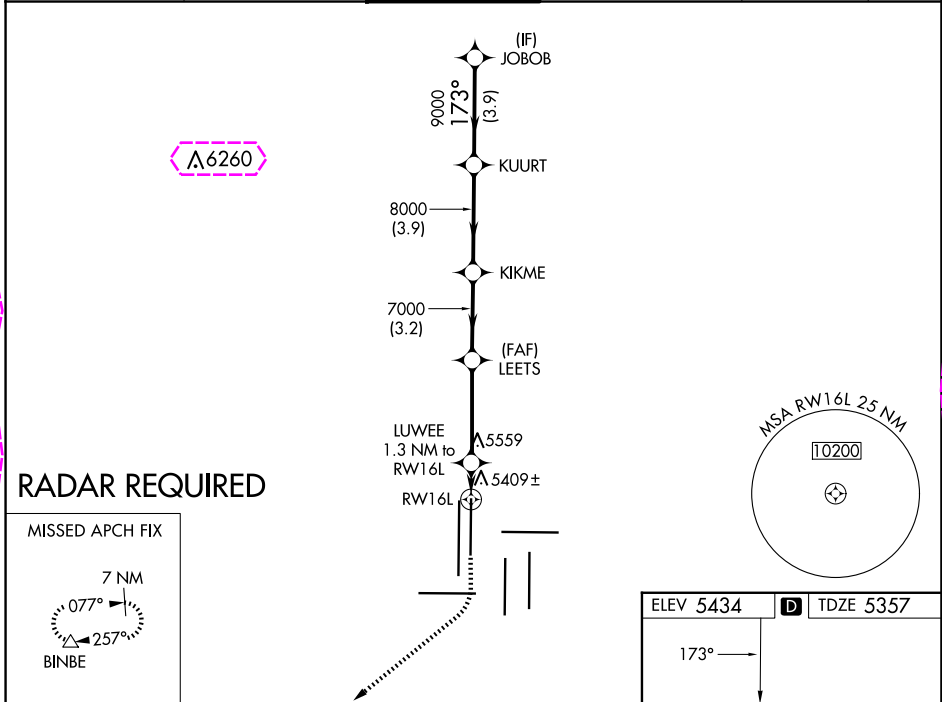
⚠ For uncompensated Baro-VNAV systems, LNAV/VNAV NA below -25°C (-13°F) or above 45°C (114°F). Simultaneous approach authorized with Rwy 17 L/R. DME/DME RNP -0.3 NA. LNAV procedure NA during simultaneous operations. For inoperative MALSR, increase LNAV/VNAV all Cats, and LNAV Cats C/D visibility to RVR 4500. Use of FD or AP providing RNAV track guidance required during simultaneous operations.

MALSR

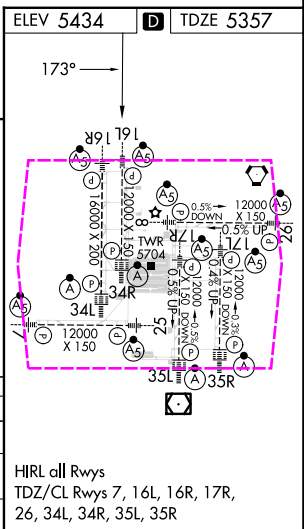


MISSED APPROACH: Climb to 5900 then climbing right turn to 10000 direct BINBE and hold, continue climb-in-hold to 10000.

D-ATIS 125.6 379.9 (ARR) 134.025 (DEP)	DENVER APP CON 119.3 307.3 (N) 120.35 379.3 (S)	DENVER TOWER 135.3 351.95	GND CON 121.35 379.175 (W) 121.85 377.1 (E)	CLNC DEL 118.75	CPDLC
--	---	-------------------------------------	---	---------------------------	-------



5900	10000	BINBE	VGSI and RNAV glidepath not coincident (VGSI Angle 3.00/TCH 71).	JOBOB
*LNAV only	LUWEE 1.3 NM to RWY16L	LEETS	KIKME	KUURT
0.8 NM to RWY16L	5820	7000	8000	9000
0.8	0.5	3.7 NM	3.2 NM	3.9 NM
A	B	C	D	
LPV DA	5557/18	200 (200-½)		
LNAV/ VNAV	5647/24	290 (300-½)		
LNAV MDA	5660/24	303 (300-½)		



DENVER, COLORADO
Amdt 1C 12OCT17

39°52'N-104°40'W

DENVER INTL (DEN)

RNAV (GPS) Y RWY 16L

SW-1, 10 JUL 2025 to 07 AUG 2025

SW-1, 10 JUL 2025 to 07 AUG 2025

DENVER, COLORADO

AL-9077 (FAA)


25219

WAAS CH 99307 W16A	APP CRS 173°	Rwy Ldg 12000 TDZE 5357 Apt Elev 5434
--	------------------------	--

RNAV (GPS) Y RWY 16L

DENVER INTL (DEN)

▼ For uncompensated Baro-VNAV systems, LNAV/VNAV NA below -25°C (-13°F) or above 45°C (114°F). Simultaneous approach authorized with Rwy 17 L/R. DME/DME RNP -0.3 NA. LNAV procedure NA during simultaneous operations. For inoperative MALSR, increase LNAV/VNAV all Cats, and LNAV Cats C/D visibility to RVR 4500. Use of FD or AP providing RNAV track guidance required during simultaneous operations.

MALSR 

MISSED APPROACH: Climb to 5900 then climbing right turn to 10000 direct BINBE and hold, continue climb-in-hold to 10000.

D-ATIS 125.6 379.9 (ARR) 134.025 (DEP)	DENVER APP CON 119.3 307.3 (N) 120.35 379.3 (S)	DENVER TOWER 135.3 351.95	GND CON 121.35 379.175 (W) 121.85 377.1 (E)	CLNC DEL 118.75	CPDLC
--	---	-------------------------------------	---	---------------------------	-------

