

DENVER, COLORADO

AL-9077 (FAA)

24361

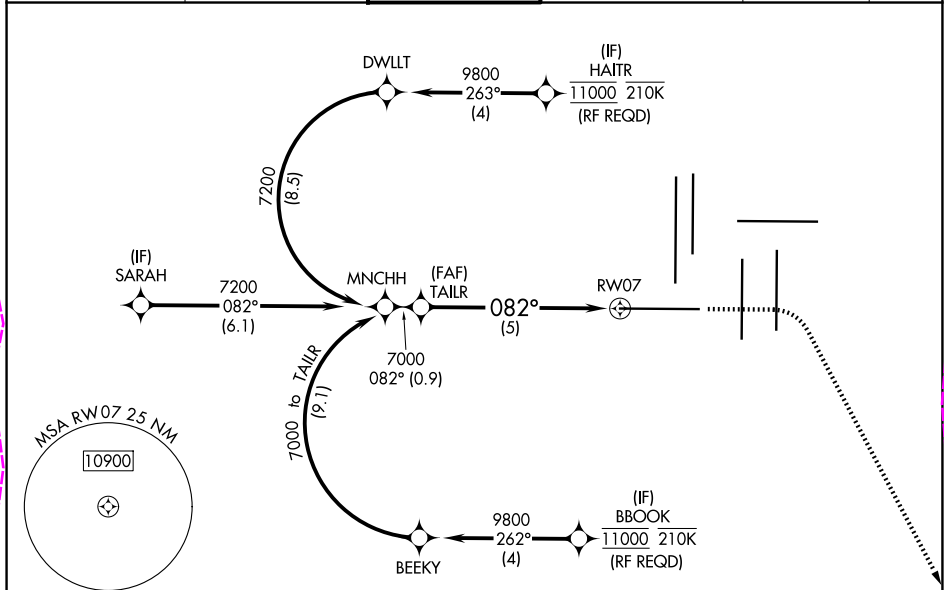
APP CRS	Rwy Idg	12000
082°	TDZE	5352
	Apt Elev	5434

RNAV (RNP) Z RWY 7

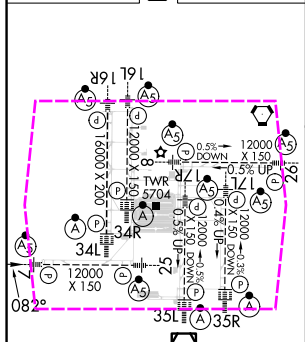
DENVER INTL (DEN)

RNP AR APCH.	MALSR	MISSED APPROACH: Climb to 5900 then climbing right turn to 10000 direct CIDMU and track 081° to LIMEX and hold.
Simultaneous approach authorized. For uncompensated Baro-VNAV systems, procedure NA below -23°C or above 54°C. For inop ALS, increase RNP 0.15 all Cats visibility to RVR 4000, and increase RNP 0.30 all Cats visibility to RVR 6000.		

D-ATIS	DENVER APP CON	DENVER TOWER	GND CON	CLNC DEL	CPDLC
125.6 379.9 (ARR) 134.025 (DEP)	119.3 307.3 (N) 120.35 379.3 (S)	128.75 273.55	121.35 379.175 (W) 121.85 377.1 (E)	118.75	



ELEV 5434	D	TDZE 5352
-----------	---	-----------



HIRL all Rwy
TDZ/CL Rwy 7, 16L, 16R, 17R,
26, 34L, 34R, 35L, 35R

DENVER, COLORADO

Amdt 1 26MAR20

39°52'N-104°40'W

DENVER INTL (DEN)

RNAV (RNP) Z RWY 7

GP 3.00° TCH 55				
See planview for multiple IF locations.				
CATEGORY	A	B	C	D
RNP 0.15 DA	5602/24	250 (200-½)		
RNP 0.30 DA	5753/40	401 (400-¾)		
AUTHORIZATION REQUIRED				

RNAV (RNP) Z RWY 7
DENVER INTL (DEN)

RNP AR APCH.

T Simultaneous approach authorized. For uncompensated Baro-VNAV systems, procedure NA below -23°C or above 54°C. For inop ALS, increase RNP 0.15 all Cats visibility to RVR 4000, and increase RNP 0.30 all Cats visibility to RVR 6000.

MALSR



MISSED APPROACH: Climb to 5900 then climbing right turn to 10000 direct CIDMU and track 081° to LIMEX and hold.

D-ATIS
125.6 379.9 (ARR)
134.025 (DEP)

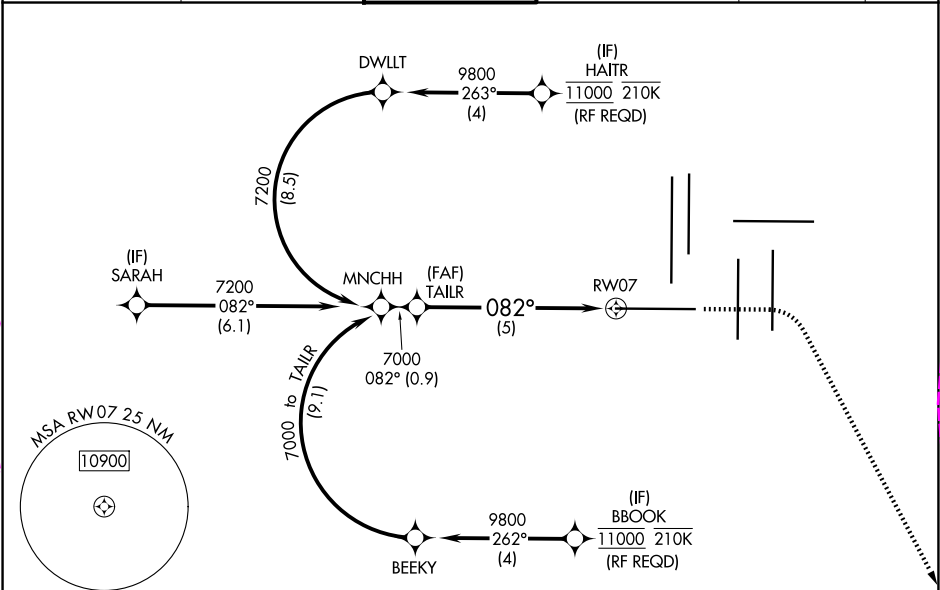
DENVER APP CON
119.3 307.3 (N)
120.35 379.3 (S)

DENVER TOWER
128.75 273.55

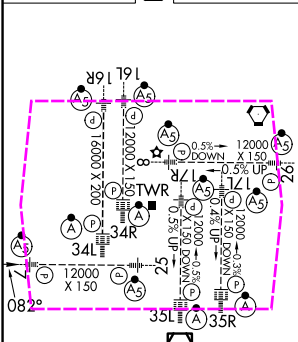
GND CON
121.35 379.175 (W)
121.85 377.1 (E)

CLNC DEL
118.75

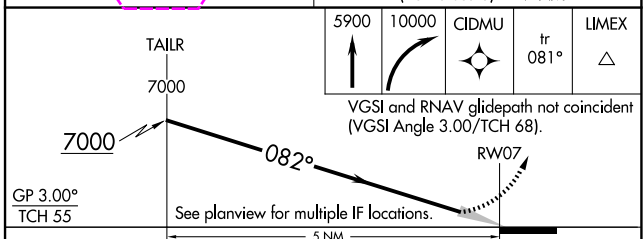
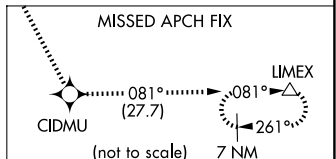
CPDLC



ELEV 5434	D	TDZE 5352
-----------	----------	-----------



HIRL all Rwy's
TDZ/CL Rwy's 7, 16L, 16R, 17R,
26, 34L, 34R, 35L, 35R



CATEGORY	A	B	C	D
RNP 0.15 DA		5602/24	250 (200-½)	
RNP 0.30 DA		5753/40	401 (400-¾)	

AUTHORIZATION REQUIRED

DENVER, COLORADO

Amdt 1 26MAR20

39°52'N-104°40'W

DENVER INTL (DEN)

RNAV (RNP) Z RWY 7