

DENVER, COLORADO

AL-9077 (FAA)

24361


APP CRS <b>353°</b>	Rwy Idg <b>12000</b>
	TDZE <b>5370</b>
	Apt Elev <b>5434</b>

# RNAV (RNP) Z RWY 35R

DENVER INTL (DEN)

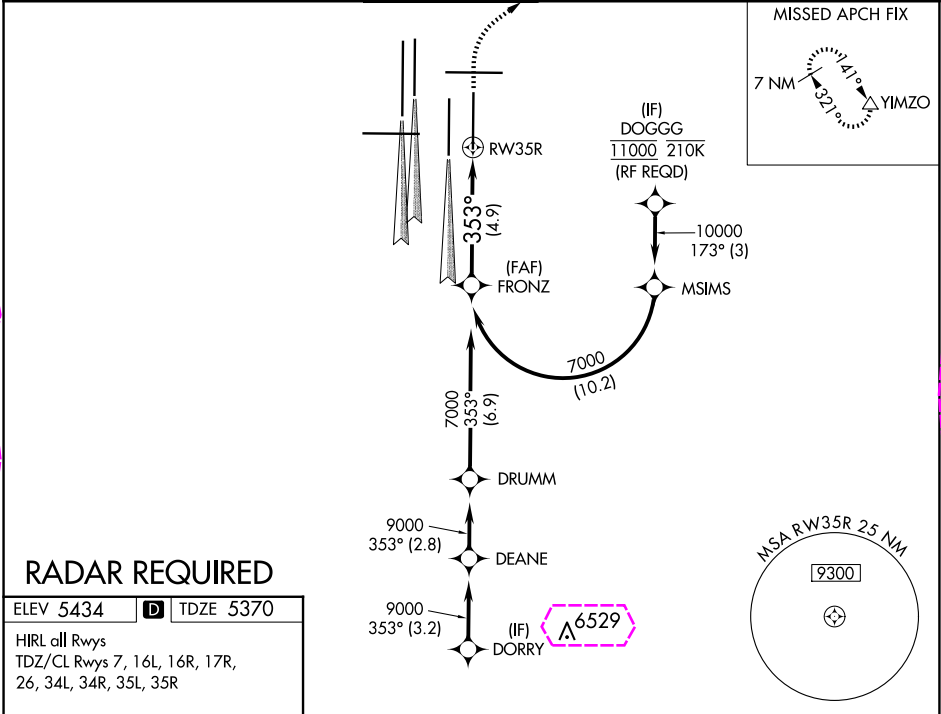
**⚠** For uncompensated Baro-VNAV systems, procedure NA below -25°C (-13°F) or above 45°C (114°F). GPS required. For inoperative ALSF, increase RNP 0.10 all Cats visibility to RVR 4500 and RNP 0.30 all Cats visibility to RVR 5000. Simultaneous approach authorized. Use of FD or AP providing RNAV track guidance required during simultaneous operations.

ALSF-2



MISSED APPROACH: Climb to 5900, then climbing right turn to 8000 direct YIMZO and hold.

D-ATIS <b>125.6 379.9 (ARR)</b> <b>134.025 (DEP)</b>	DENVER APP CON <b>119.3 307.3 (N)</b> <b>120.35 379.3 (S)</b>	DENVER TOWER <b>132.35 239.275</b>	GND CON <b>121.35 379.175 (W)</b> <b>121.85 377.1 (E)</b>	CLNC DEL <b>118.75</b>	CPDLC
--	---	---------------------------------------	---	---------------------------	-------



VGSi and RNAV glidepath not coincident (VGSi Angle 3.00/TCH 66).				5900 ↑	8000 ↗	YIMZO △
See planview for multiple IF locations.						
4.9 NM						
CATEGORY	A	B	C	D		
RNP 0.10 DA	5631/24 261 (200-½)					
RNP 0.30 DA	5702/32 332 (300-⅝)					
AUTHORIZATION REQUIRED						

DENVER, COLORADO

AL-9077 (FAA)

25219

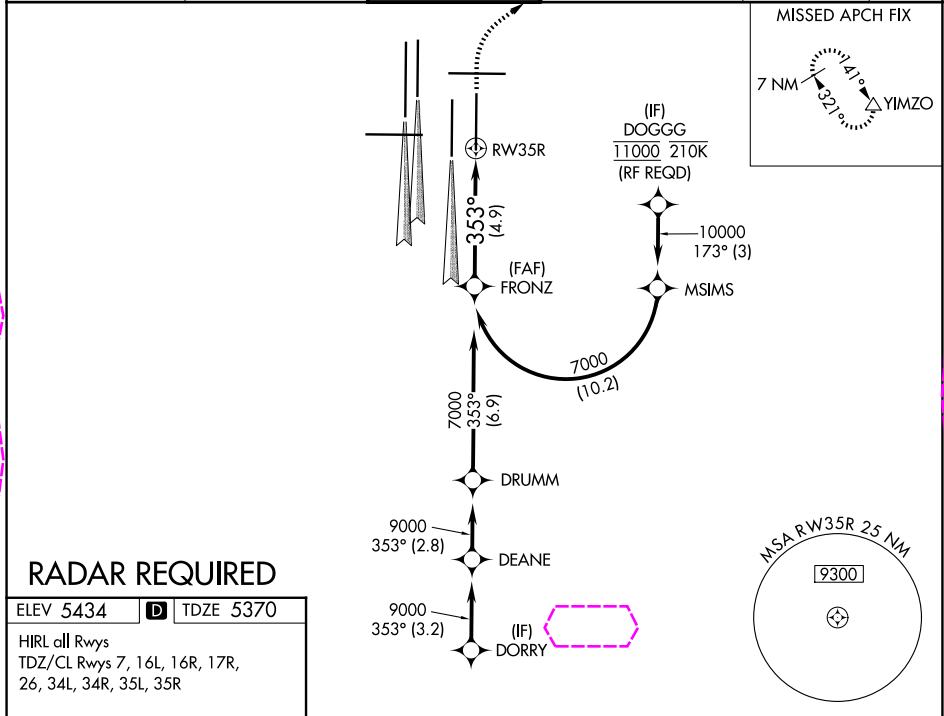
APP CRS <b>353°</b>	Rwy Ldg TDZE Apt Elev <b>12000</b> <b>5370</b> <b>5434</b>
------------------------	---

# RNAV (RNP) Z RWY 35R

DENVER INTL (DEN)

<p>▼ For uncompensated Baro-VNAV systems, procedure NA below -25°C (-13°F) or above 45°C (114°F). GPS required. For inoperative ALSF, increase RNP 0.10 all Cats visibility to RVR 4500 and RNP 0.30 all Cats visibility to RVR 5000. Simultaneous approach authorized. Use of FD or AP providing RNAV track guidance required during simultaneous operations.</p>	ALSF-2 	MISSED APPROACH: Climb to 5900, then climbing right turn to 8000 direct YIMZO and hold.
--	------------	---

D-ATIS <b>125.6 379.9</b> (ARR) <b>134.025</b> (DEP)	DENVER APP CON <b>119.3 307.3</b> (N) <b>120.35 379.3</b> (S)	DENVER TOWER <b>132.35 239.275</b>	GND CON <b>121.35 379.175</b> (W) <b>121.85 377.1</b> (E)	CLNC DEL <b>118.75</b>	CPDLC
--	---	---------------------------------------	---	---------------------------	-------



DENVER, COLORADO  
Orig-C 01FEB18

DENVER INTL (DEN)  
39°52'N-104°40'W  
RNAV (RNP) Z RWY 35R

SW-1, 07 AUG 2025 to 04 SEP 2025

SW-1, 07 AUG 2025 to 04 SEP 2025