

DENVER, COLORADO

AL-9077 (FAA)

24361

APP CRS	Rwy Idg	12000
353°	TDZE	5434
	Apt Elev	5434

RNAV (RNP) Z RWY 35L

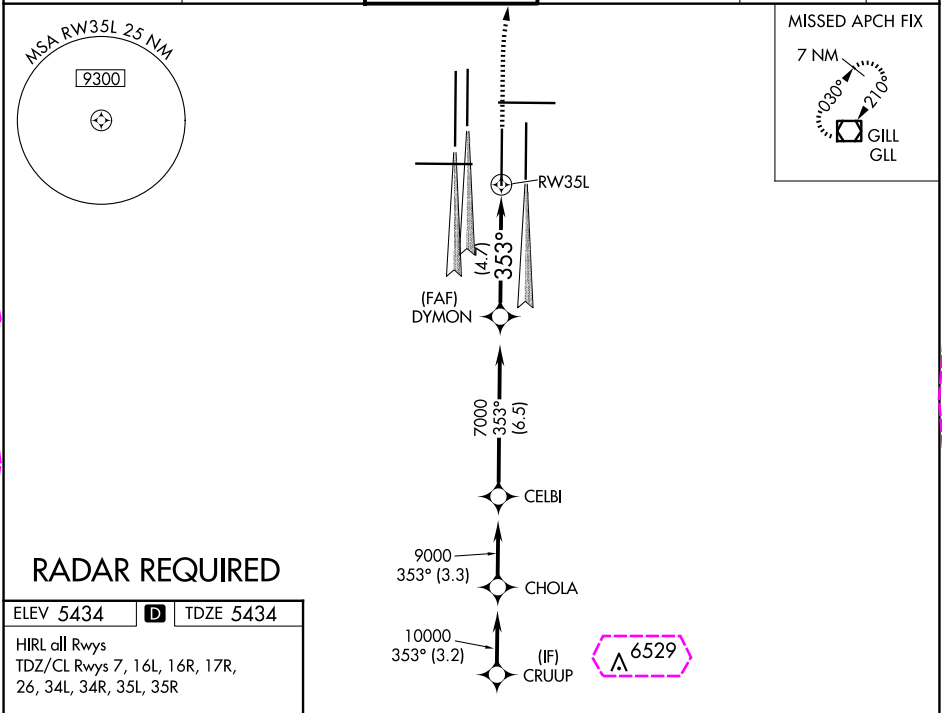
DENVER INTL (DEN)

V For uncompensated Baro-VNAV systems, procedure NA below -25°C (-13°F) or above 46°C (115°F). GPS required. For inoperative ALSF, increase RNP 0.10 all Cots visibility to RVR 4500 and RNP 0.30 all Cots visibility to RVR 5000. Simultaneous approach authorized. Use of FD or AP providing RNAV track guidance required during simultaneous operations.

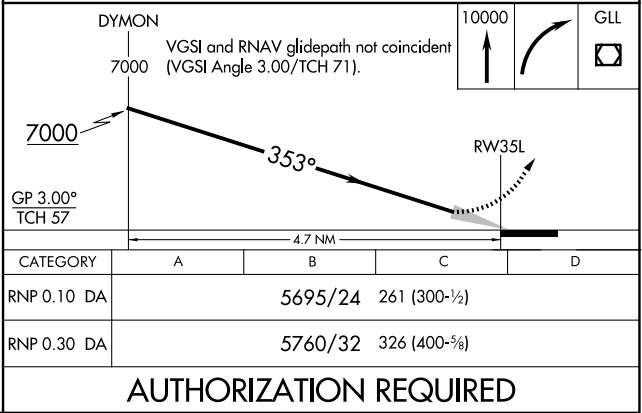
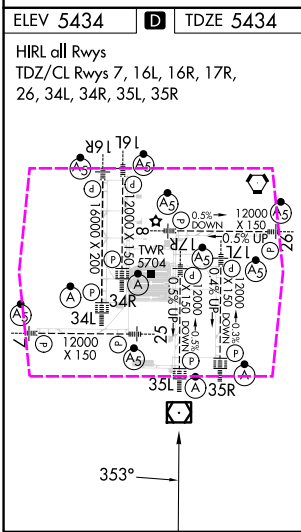
ALSF-2

MISSED APPROACH: Climb to 10000, then right turn direct GLL VOR/DME and hold.

D-ATIS	DENVER APP CON	DENVER TOWER	GND CON	CLNC DEL	CPDLC
125.6 379.9 (ARR)	119.3 307.3 (N)	124.3 322.45	121.35 379.175 (W)	118.75	
134.025 (DEP)	120.35 379.3 (S)		121.85 377.1 (E)		



RADAR REQUIRED



SW-1, 10 JUL 2025 to 07 AUG 2025

SW-1, 10 JUL 2025 to 07 AUG 2025

DENVER, COLORADO


AL-9077 (FAA)

25219

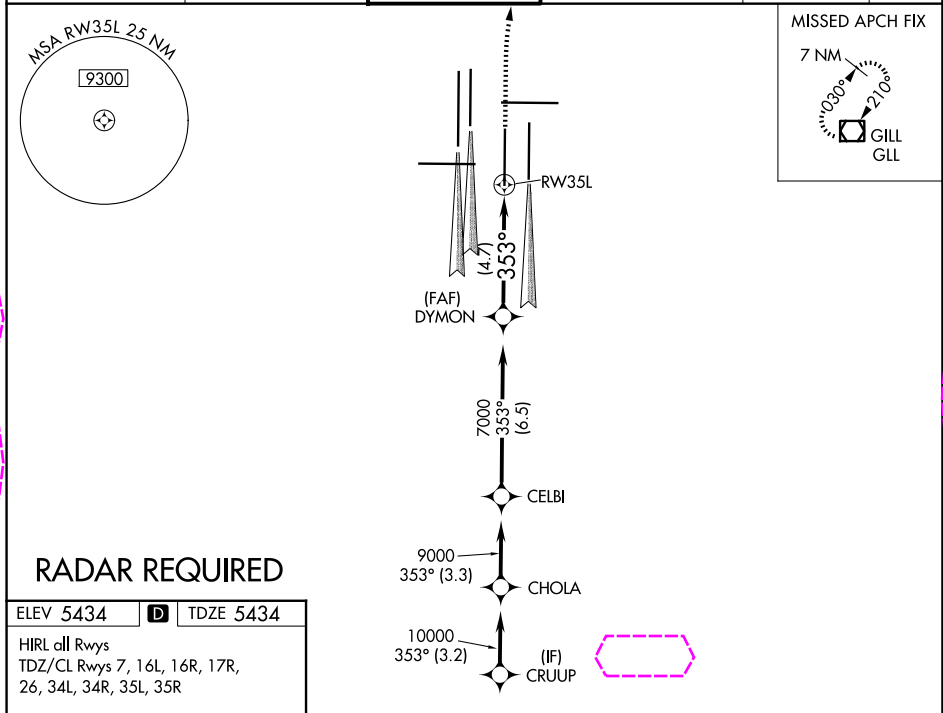
APP CRS	Rwy Ldg	12000
353°	TDZE	5434
	Apt Elev	5434

RNAV (RNP) Z RWY 35L

DENVER INTL (DEN)

<p>V For uncompensated Baro-VNAV systems, procedure NA below -25°C (-13°F) or above 46°C (115°F). GPS required. For inoperative ALSF, increase RNP 0.10 all Cots visibility to RVR 4500 and RNP 0.30 all Cots visibility to RVR 5000. Simultaneous approach authorized. Use of FD or AP providing RNAV track guidance required during simultaneous operations.</p>	<p>ALSF-2</p> 	<p>MISSED APPROACH: Climb to 10000, then right turn direct GLL VOR/DME and hold.</p>
---	---	--

D-ATIS 125.6 379.9 (ARR) 134.025 (DEP)	DENVER APP CON 119.3 307.3 (N) 120.35 379.3 (S)	DENVER TOWER 124.3 322.45	GND CON 121.35 379.175 (W) 121.85 377.1 (E)	CLNC DEL 118.75	CPDLC
--	---	-------------------------------------	---	---------------------------	-------



--

DENVER, COLORADO

Orig-C 01FEB18

39°52'N-104°40'W

DENVER INTL (DEN)

RNAV (RNP) Z RWY 35L