

DENVER, COLORADO

AL-9077 (FAA)

24361

APP CRS	Rwy Idg	12000
353°	TDZE	5354
	Apt Elev	5434

# RNAV (RNP) Z RWY 34R

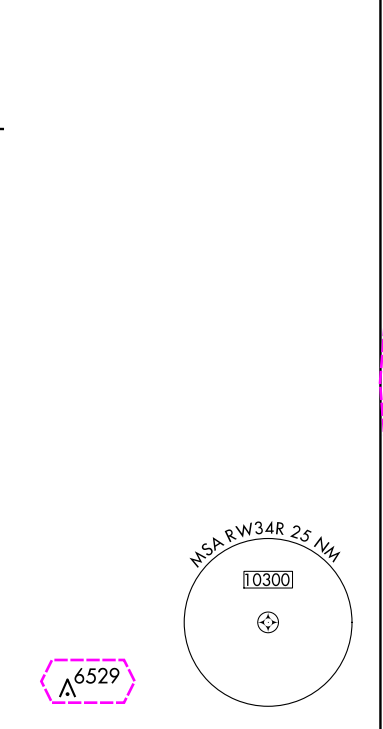
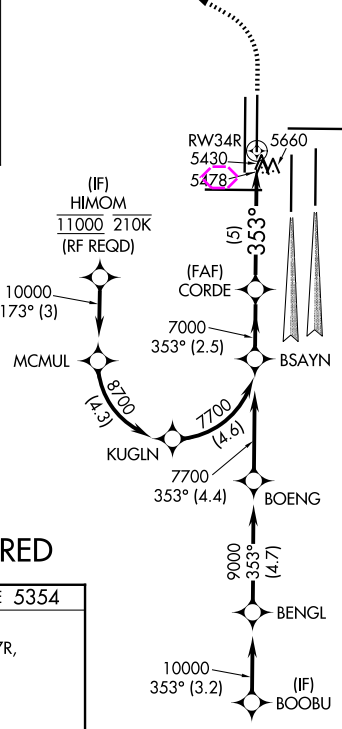
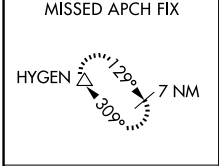
DENVER INTL (DEN)

For uncompensated Baro-VNAV systems, procedure NA below -25°C (-13°F) or above 46°C (114°F). GPS required. For inoperative ALSF, increase RNP 0.10 all Cats visibility to RVR 6000 and RNP 0.20 all Cats visibility to 1½ mile and RNP 0.30 all Cats visibility to 2¼ mile. Simultaneous approach authorized. Use of FD or AP providing RNAV track guidance required during simultaneous operations.

ALSF-2

MISSED APPROACH:  
Climb to 6000 then climbing left turn to 10000 direct HYGEN and hold.

D-ATIS 125.6 379.9 (ARR) 134.025 (DEP)	DENVER APP CON 119.3 307.3 (N) 120.35 379.3 (S)	DENVER TOWER 135.3 351.95	GND CON 121.35 379.175 (W) 121.85 377.1 (E)	CLNC DEL 118.75	CPDLC
--	---	------------------------------	---	--------------------	-------



## RADAR REQUIRED

ELEV 5434 TDZE 5354

HIRL all Rwy's  
TDZ/CL Rwy's 7, 16L, 16R, 17R,  
26, 34L, 34R, 35L, 35R

GP 3.00° TCH 59

BSAYN 7700 353° 7000 353° RW34R

VGSI and RNAV glidepath not coincident (VGSI Angle 3.00/TCH 63).

6000 10000 HYGEN

See planview for multiple IF locations.

CATEGORY	A	B	C	D
RNP 0.10 DA	5739/40	385 (400-¾)		
RNP 0.20 DA	5849/60	495 (500-1¼)		
RNP 0.30 DA	5980-1 ½	626 (600-1½)		

### AUTHORIZATION REQUIRED

SW-1, 10 JUL 2025 to 07 AUG 2025

SW-1, 10 JUL 2025 to 07 AUG 2025

DENVER, COLORADO

AL-9077 (FAA)

25219

APP CRS	Rwy Ldg	12000
353°	TDZE	5354
	Apt Elev	5434

# RNAV (RNP) Z RWY 34R

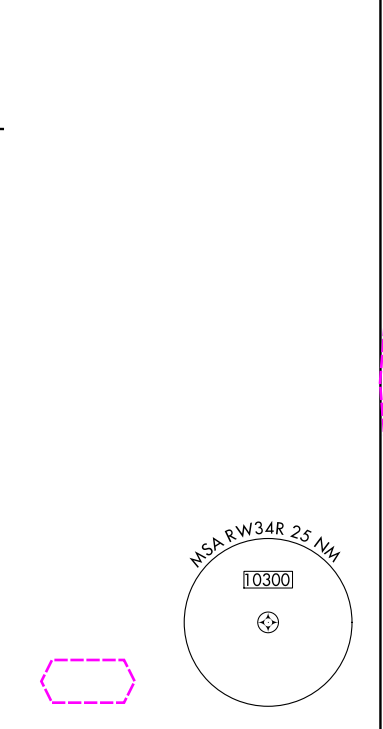
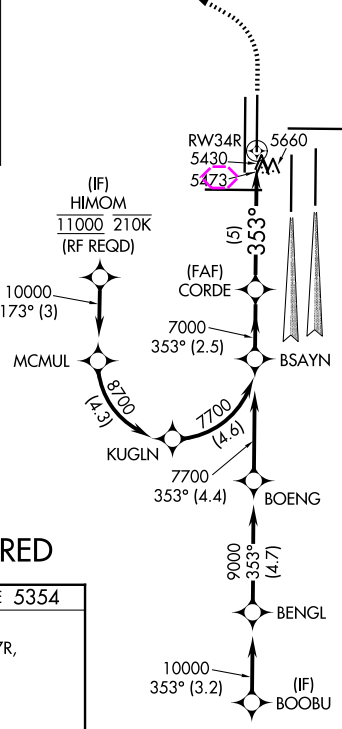
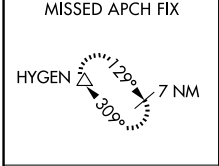
DENVER INTL (DEN)

For uncompensated Baro-VNAV systems, procedure NA below -25°C (-13°F) or above 46°C (114°F). GPS required. For inoperative ALSF, increase RNP 0.10 all Cats visibility to RVR 6000 and RNP 0.20 all Cats visibility to 1½ mile and RNP 0.30 all Cats visibility to 2¼ mile. Simultaneous approach authorized. Use of FD or AP providing RNAV track guidance required during simultaneous operations.

ALSF-2

MISSED APPROACH:  
Climb to 6000 then climbing left turn to 10000 direct HYGEN and hold.

D-ATIS 125.6 379.9 (ARR) 134.025 (DEP)	DENVER APP CON 119.3 307.3 (N) 120.35 379.3 (S)	DENVER TOWER 135.3 351.95	GND CON 121.35 379.175 (W) 121.85 377.1 (E)	CLNC DEL 118.75	CPDLC
--	---	------------------------------	---	--------------------	-------



## RADAR REQUIRED

ELEV 5434 TDZE 5354

HIRL all Rwys  
TDZ/CL Rwys 7, 16L, 16R, 17R,  
26, 34L, 34R, 35L, 35R

GP 3.00° TCH 59

BSAYN 7700 353° 7000

CORDE 7000

RW34R

6000 10000 HYGEN

See planview for multiple IF locations.

CATEGORY	A	B	C	D
RNP 0.10 DA	5739/40	385 (400-¾)		
RNP 0.20 DA	5849/60	495 (500-1¼)		
RNP 0.30 DA	5980-1 ½	626 (600-1½)		

AUTHORIZATION REQUIRED

SW-1, 07 AUG 2025 to 04 SEP 2025

SW-1, 07 AUG 2025 to 04 SEP 2025