

DENVER, COLORADO


AL-9077 (FAA)

24361

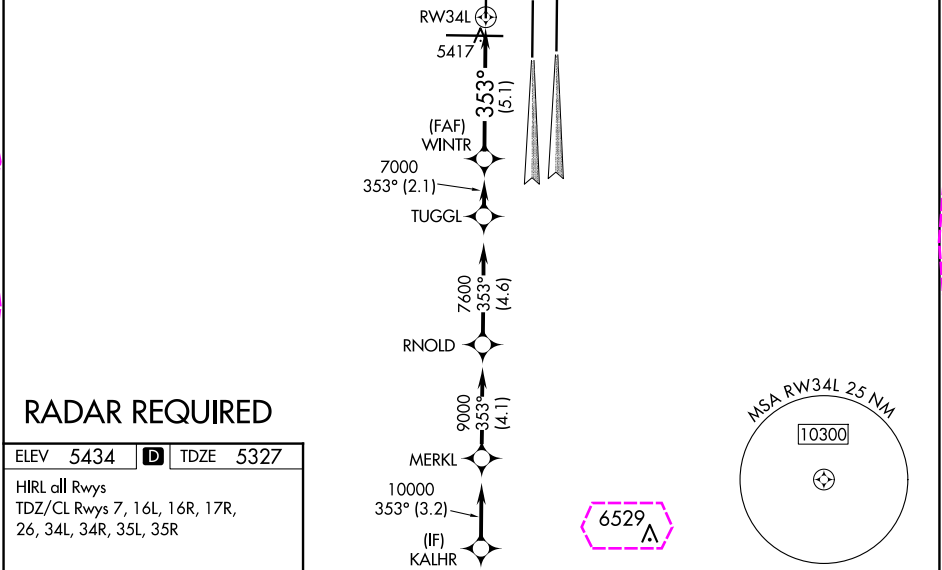
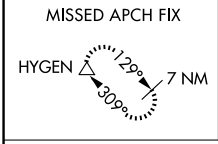
APP CRS	Rwy Idg	16000
353°	TDZE	5327
	Apt Elev	5434

# RNAV (RNP) Z RWY 34L

DENVER INTL (DEN)

▼ For uncompensated Baro-VNAV systems, procedure NA below -25°C (-13°F) or above 48°C (118°F). GPS required. For inoperative ALSF, increase RNP 0.10 all Cats visibility to RVR 4500 and RNP 0.20 all Cats visibility to RVR 6000 and RNP 0.30 all Cats visibility to 1½ mile. Simultaneous approach authorized. Use of FD or AP providing RNAV track guidance required during simultaneous operations.	ALSF-2 	MISSED APPROACH: Climb to 5900 then climbing left turn to 10000 direct HYGEM and hold.
---	---	--

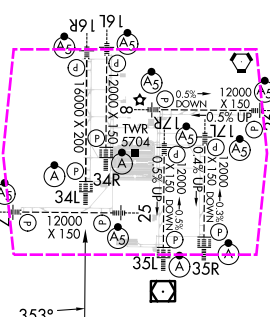
D-ATIS 125.6 379.9 (ARR) 134.025 (DEP)	DENVER APP CON 119.3 307.3 (N) 120.35 379.3 (S)	DENVER TOWER 135.3 351.95	GND CON 121.35 379.175 (W) 121.85 377.1 (E)	CLNC DEL 118.75	CPDLC
--	---	------------------------------	---	--------------------	-------

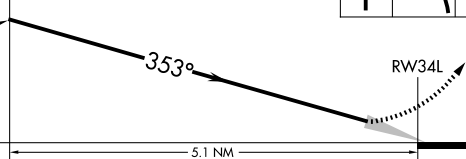


## RADAR REQUIRED

ELEV 5434 **D** TDZE 5327

HIRL all Rwys  
TDZ/CL Rwys 7, 16L, 16R, 17R, 26, 34L, 34R, 35L, 35R



WINTR 7000	VGSI and RNAV glidepath not coincident (VGSI Angle 3.00/TCH 70).	5900	10000	HYGEM
7000	353°			
GP 3.00° TCH 50	5.1 NM			
CATEGORY	A	B	C	D
RNP 0.10 DA	5587/24		260 (200-½)	
RNP 0.20 DA	5720/45		393 (300-¾)	
RNP 0.30 DA	5782/60		455 (400-1¼)	
AUTHORIZATION REQUIRED				

SW-1, 10 JUL 2025 to 07 AUG 2025

SW-1, 10 JUL 2025 to 07 AUG 2025

DENVER, COLORADO

AL-9077 (FAA)

25219

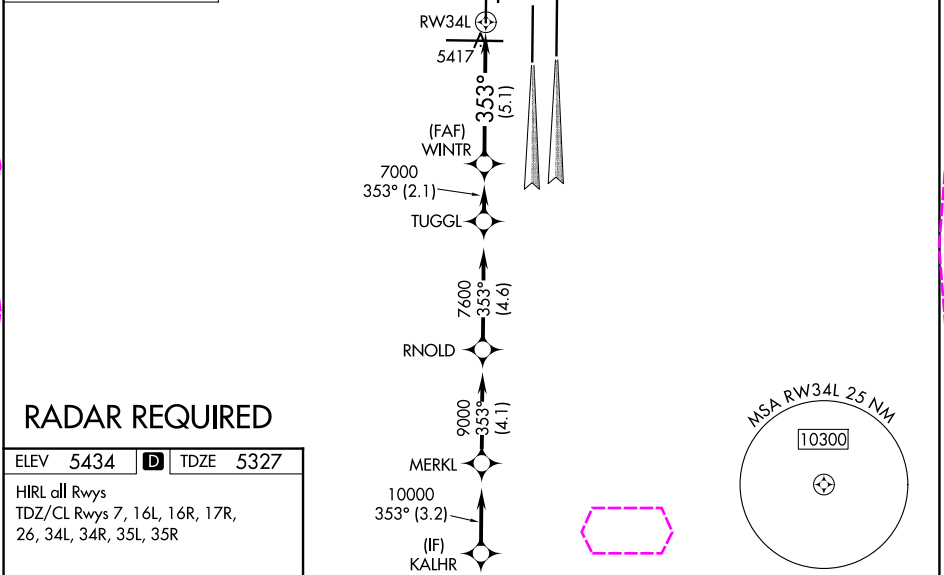
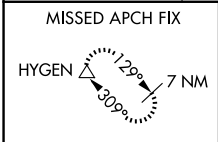
APP CRS	Rwy Ldg	16000
353°	TDZE	5327
	Apt Elev	5434

# RNAV (RNP) Z RWY 34L

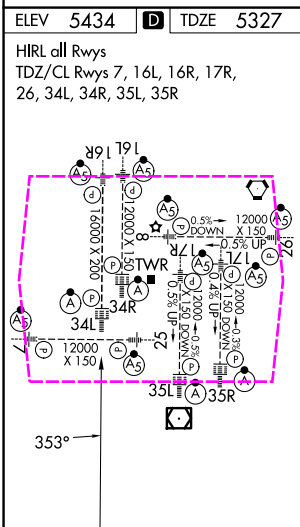
DENVER INTL (DEN)

<p>▼ For uncompensated Baro-VNAV systems, procedure NA below -25°C (-13°F) or above 48°C (118°F). GPS required. For inoperative ALSF, increase RNP 0.10 all Cats visibility to RVR 4500 and RNP 0.20 all Cats visibility to RVR 6000 and RNP 0.30 all Cats visibility to 1½ mile. Simultaneous approach authorized. Use of FD or AP providing RNAV track guidance required during simultaneous operations.</p>	ALSF-2	MISSED APPROACH: Climb to 5900 then climbing left turn to 10000 direct HYGEM and hold.
--	--------	--

D-ATIS 125.6 379.9 (ARR) 134.025 (DEP)	DENVER APP CON 119.3 307.3 (N) 120.35 379.3 (S)	DENVER TOWER 135.3 351.95	GND CON 121.35 379.175 (W) 121.85 377.1 (E)	CLNC DEL 118.75	CPDLC
--	---	------------------------------	---	--------------------	-------



## RADAR REQUIRED



WINTR 7000	VGSI and RNAV glidepath not coincident (VGSI Angle 3.00/TCH 70).	5900	10000	HYGEM
7000	353°			
GP 3.00° TCH 50				
	5.1 NM			
CATEGORY	A	B	C	D
RNP 0.10 DA		5587/24	260 (200-½)	
RNP 0.20 DA		5720/45	393 (300-¾)	
RNP 0.30 DA		5782/60	455 (400-1¼)	
AUTHORIZATION REQUIRED				

DENVER, COLORADO  
Orig-C 01FEB18

39°52'N-104°40'W

DENVER INTL (DEN)

# RNAV (RNP) Z RWY 34L

SW-1, 07 AUG 2025 to 04 SEP 2025

SW-1, 07 AUG 2025 to 04 SEP 2025