

DENVER, COLORADO

AL-9077 (FAA)

24361

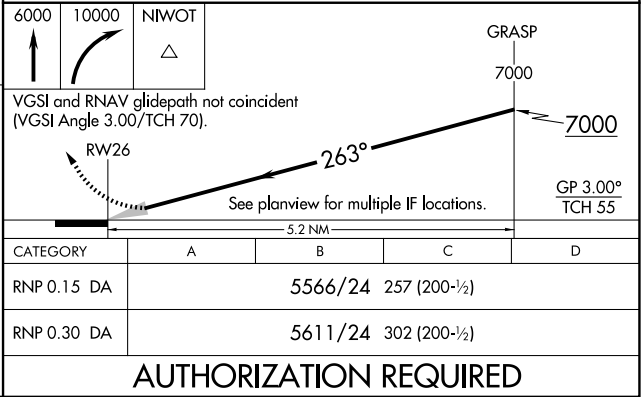
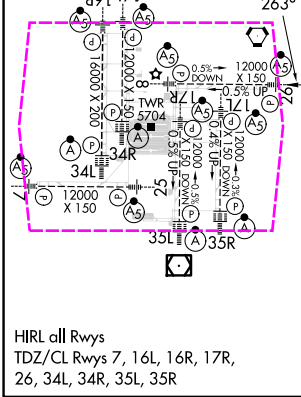
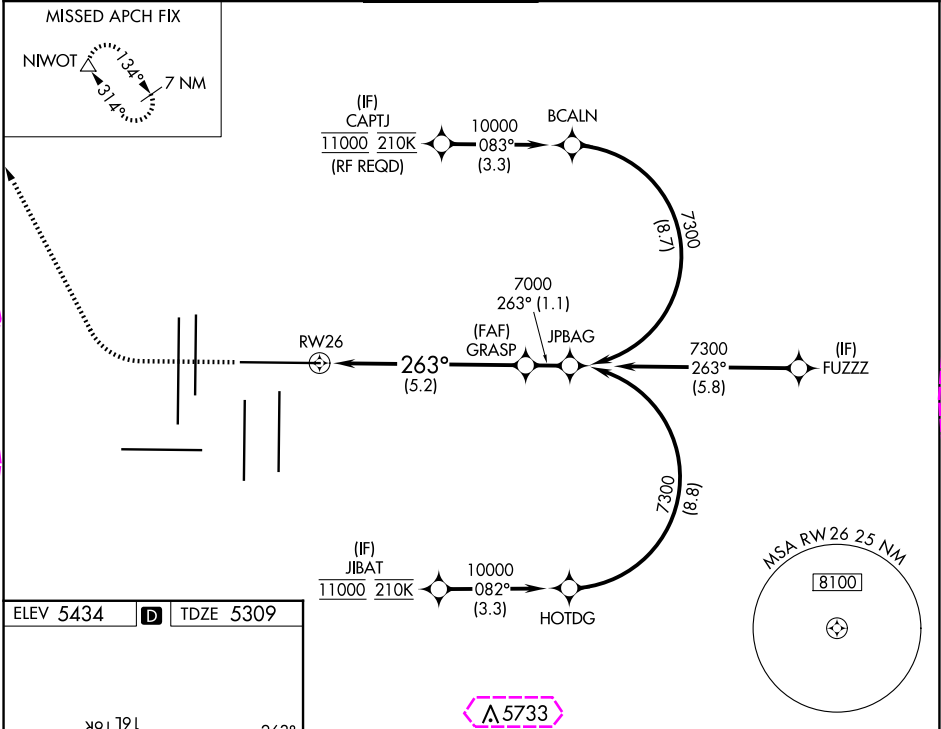
APP CRS <b>263°</b>	Rwy Idg <b>12000</b>
	TDZE <b>5309</b>
	Apt Elev <b>5434</b>

# RNAV (RNP) Z RWY 26

DENVER INTL (DEN)

RNP AR APCH. Simultaneous approach authorized. For uncompensated Baro-VNAV systems, procedure NA below -23°C or above 54°C. For inop ALS, increase RNP 0.15 all Cats visibility to RVR 4000, and increase RNP 0.30 all Cats visibility to RVR 4500.	MALSR 	MISSED APPROACH: Climb to 6000 then climbing right turn to 10000 direct NIWOT and hold.
--	-----------	---

D-ATIS <b>125.6 379.9</b> (ARR) <b>134.025</b> (DEP)	DENVER APP CON <b>119.3 307.3</b> (N) <b>120.35 379.3</b> (S)	DENVER TOWER <b>132.35 239.275</b>	GND CON <b>121.35 379.175</b> (W) <b>121.85 377.1</b> (E)	CLNC DEL <b>118.75</b>	CPDLC
--	---	---------------------------------------	---	---------------------------	-------



DENVER, COLORADO  
Amdt 1 26MAR20

39°52'N-104°40'W

DENVER INTL (DEN)  
**RNAV (RNP) Z RWY 26**

SW-1, 10 JUL 2025 to 07 AUG 2025

SW-1, 10 JUL 2025 to 07 AUG 2025

DENVER, COLORADO

AL-9077 (FAA)

25219

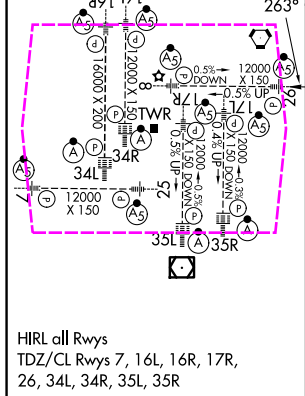
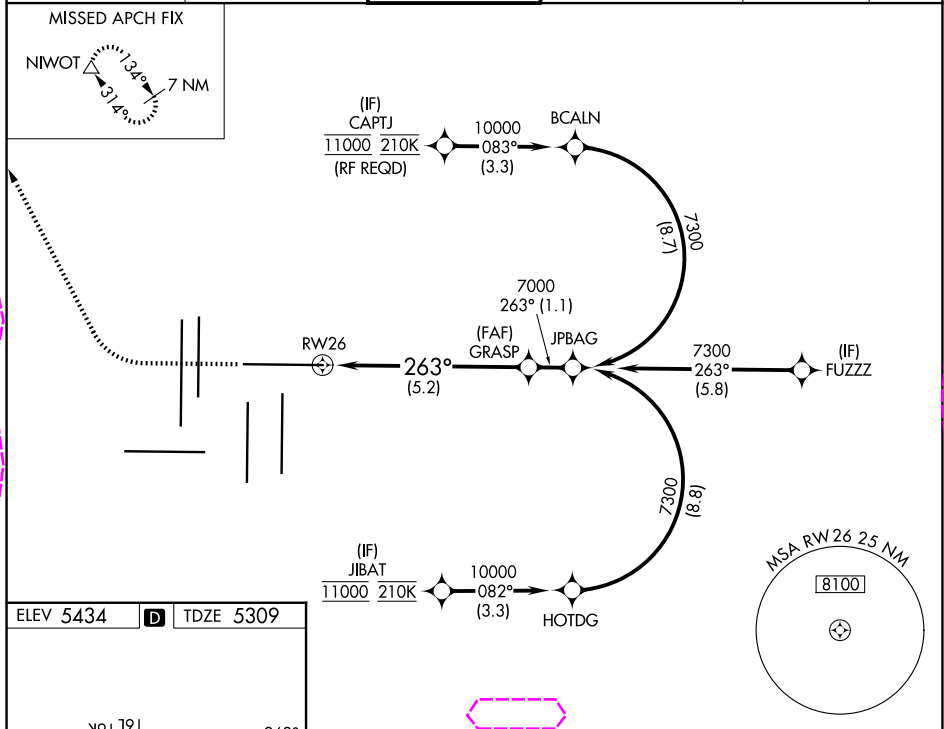
APP CRS <b>263°</b>	Rwy Ldg TDZE <b>5309</b>	<b>12000</b>
	Apt Elev <b>5434</b>	




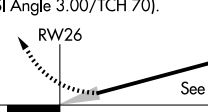
# RNAV (RNP) Z RWY 26

DENVER INTL (DEN)

RNP AR APCH. Simultaneous approach authorized. For uncompensated Baro-VNAV systems, procedure NA below -23°C or above 54°C. For inop ALS, increase RNP 0.15 all Cats visibility to RVR 4000, and increase RNP 0.30 all Cats visibility to RVR 4500.	MALSR 	MISSED APPROACH: Climb to 6000 then climbing right turn to 10000 direct NIWOT and hold.
--	-----------	---

D-ATIS <b>125.6 379.9</b> (ARR) <b>134.025</b> (DEP)	DENVER APP CON <b>119.3 307.3</b> (N) <b>120.35 379.3</b> (S)	DENVER TOWER <b>132.35 239.275</b>	GND CON <b>121.35 379.175</b> (W) <b>121.85 377.1</b> (E)	CLNC DEL <b>118.75</b>	CPDLC
--	---	---------------------------------------	---	---------------------------	-------



6000	10000	NIWOT				
						
VGSI and RNAV glidepath not coincident (VGSI Angle 3.00/TCH 70).						
			<div>GRASP</div> <div>7000</div> <div>7000</div> <div>GP 3.00°</div> <div>TCH 55</div>			
See planview for multiple IF locations.						
5.2 NM						
CATEGORY	A		B		C	D
RNP 0.15 DA	5566/24 257 (200-½)					
RNP 0.30 DA	5611/24 302 (200-½)					
AUTHORIZATION REQUIRED						

DENVER, COLORADO  
Amdt 1 26MAR20

39°52'N-104°40'W

DENVER INTL (DEN)  
RNAV (RNP) Z RWY 26

SW-1, 07 AUG 2025 to 04 SEP 2025

SW-1, 07 AUG 2025 to 04 SEP 2025