

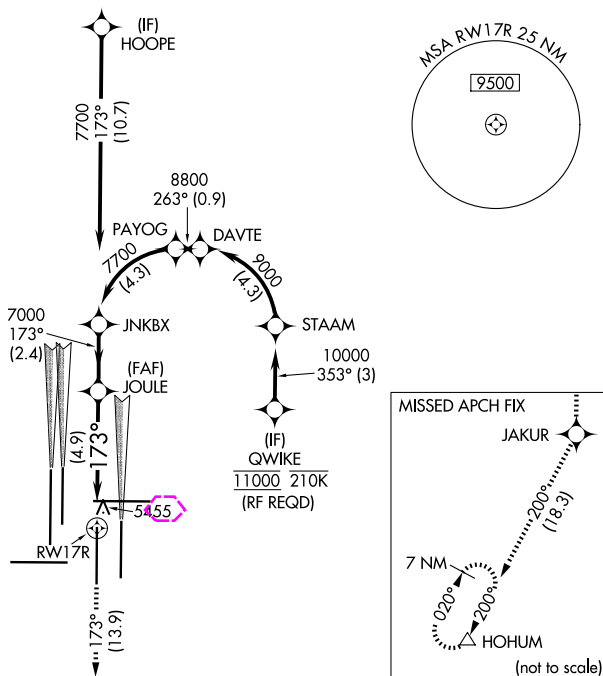
RNAV (RNP) Z RWY 17R
DENVER INTL (DEN)

MISSED APPROACH: Climb to 10000 on track 173° to JAKUR and on track 200° to HOHUM and hold.

CPDLC

RADAR REQUIRED

Λ 6260

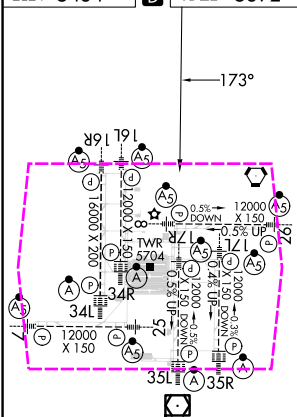


SW-1, 10 JUL 2025 to 07 AUG 2025

ELEV 5434	D	TDZE 5392
-----------	----------	-----------

D

TDZE 5392



HIRL all Rwys
TDZ/CL Rwys 7, 16L, 16R, 17R,
26, 34L, 34R, 35L, 35R

10000 ↑ tr 173°	JAKUR ✦ tr 200°	HOHUM △	VGSI and RNAV glidepath not coincident (VGSI Angle 3.00/TCH 69).		JNKBX
See planview for multiple IF locations.					
CATEGORY	A	B	C	D	
RNP 0.10 DA	5722/32 330 (300-5%)				
RNP 0.30 DA	5894/60 502 (500-1¼)				

AUTHORIZATION REQUIRED

DENVER INTL (DEN)

39°52'N-104°40'W

RNAV (RNP) Z RWY 17R

DENVER, COLORADO

AL-9077 (FAA)

25219

APP CRS 173°	Rwy Ldg 12000
	TDZE 5392
	Apt Elev 5434

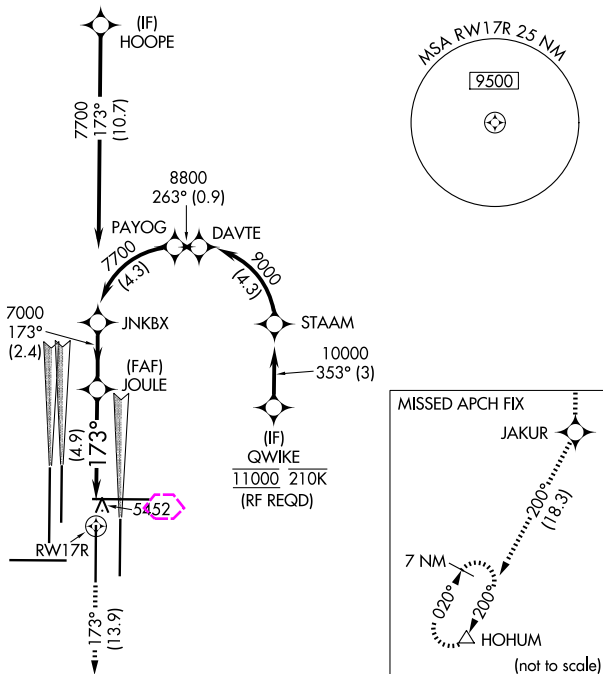
RNAV (RNP) Z RWY 17R

DENVER INTL (DEN)

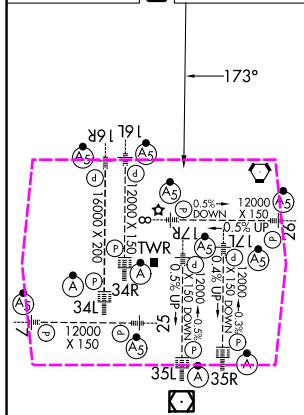
GPS required. For inoperative MALS, increase RNP 0.10 all Cats visibility to RVR 5000 and RNP 0.30 all Cats visibility to 1% mile. Simultaneous approach authorized. Use of FD or AP providing RNAV track guidance required during simultaneous operations. For uncompensated Baro-VNAV systems, procedure NA below -25°C (-13°F) or above 45°C (114°F).	MALS 	MISSED APPROACH: Climb to 10000 on track 173° to JAKUR and on track 200° to HOHUM and hold.
---	----------	---

D-ATIS 125.6 379.9 (ARR) 134.025 (DEP)	DENVER APP CON 119.3 307.3 (N) 120.35 379.3 (S)	DENVER TOWER 124.3 322.45	GND CON 121.35 379.175 (W) 121.85 377.1 (E)	CLNC DEL 118.75	CPDLC
--	---	-------------------------------------	---	---------------------------	-------

RADAR REQUIRED



ELEV 5434	D	TDZE 5392
-----------	----------	-----------



10000 ↑ tr 173°	JAKUR ♦	tr 200°	HOHUM △	VGSI and RNAV glidepath not coincident (VGSI Angle 3.00°/TCH 69°).	JNKBX
See planview for multiple IF locations.					
CATEGORY	A	B	C	D	
RNP 0.10 DA	5722/32 330 (300-5%)				
RNP 0.30 DA	5894/60 502 (500-1¼)				

AUTHORIZATION REQUIRED

DENVER, COLORADO

DENVER INTL (DEN)

Orig-C 01FEB18

39°52'N-104°40'W

RNAV (RNP) Z RWY 17R

SW-1, 07 AUG 2025 to 04 SEP 2025

SW-1, 07 AUG 2025 to 04 SEP 2025