

DENVER, COLORADO

AL-9077 (FAA)

24361

APP CRS 173°	Rwy Idg 12000
	TDZE 5339
	Apt Elev 5434

RNAV (RNP) Z RWY 17L

DENVER INTL (DEN)

GPS required. For inoperative MALS, increase RNP 0.10 all Cats visibility to RVR 4500 and RNP 0.30 all Cats visibility to RVR 6000. Simultaneous approach authorized. Use of FD or AP providing RNAV track guidance required during simultaneous operations. For uncompensated Baro-VNAV systems, procedure NA below -25°C (-13°F) or above 48°C (118°F).

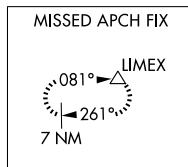
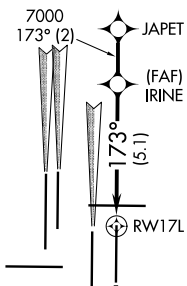
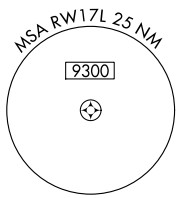
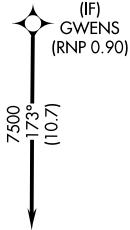
MALS

MISSED APPROACH: Climb to 5900 then climbing left turn to 10000 direct LIMEX and hold.

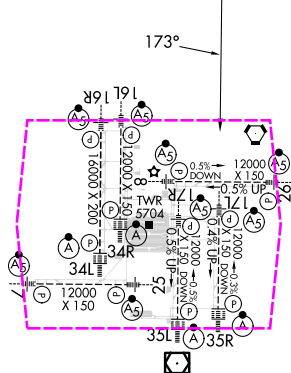
D-ATIS 125.6 379.9 (ARR) 134.025 (DEP)	DENVER APP CON 119.3 307.3 (N) 120.35 379.3 (S)	DENVER TOWER 132.35 239.275	GND CON 121.35 379.175 (W) 121.85 377.1 (E)	CLNC DEL 118.75	CPDLC
--	---	---------------------------------------	---	---------------------------	-------

RADAR REQUIRED

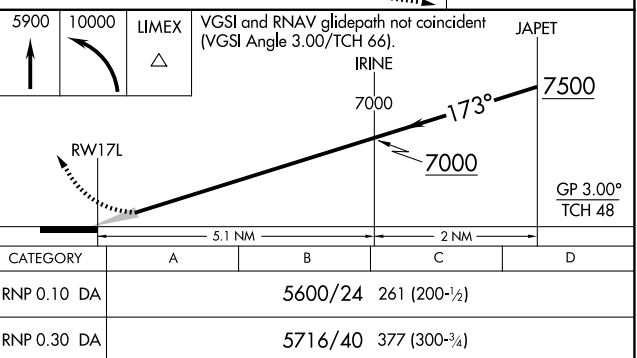
Λ 6260



ELEV 5434	D	TDZE 5339
-----------	----------	-----------



HIRL all Rwys
TDZ/CL Rwys 7, 16L, 16R, 17R,
26, 34L, 34R, 35L, 35R



CATEGORY	A	B	C	D
RNP 0.10 DA		5600/24	261 (200-½)	
RNP 0.30 DA		5716/40	377 (300-¾)	

AUTHORIZATION REQUIRED

DENVER, COLORADO

Orig-C 01FEB18

39°52'N-104°40'W

DENVER INTL (DEN)

RNAV (RNP) Z RWY 17L

SW-1, 10 JUL 2025 to 07 AUG 2025

SW-1, 10 JUL 2025 to 07 AUG 2025

DENVER, COLORADO

AL-9077 (FAA)


25219

APP CRS	Rwy Ldg	12000
173°	TDZE	5339
	Apt Elev	5434

RNAV (RNP) Z RWY 17L

DENVER INTL (DEN)

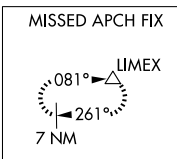
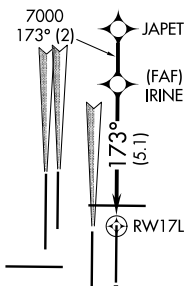
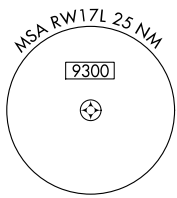
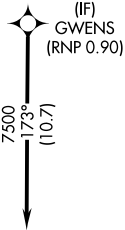
GPS required. For inoperative MALS, increase RNP 0.10 all Cats visibility to RVR 4500 and RNP 0.30 all Cats visibility to RVR 6000. Simultaneous approach authorized. Use of FD or AP providing RNAV track guidance required during simultaneous operations. For uncompensated Baro-VNAV systems, procedure NA below -25°C (-13°F) or above 48°C (118°F).

MALS 

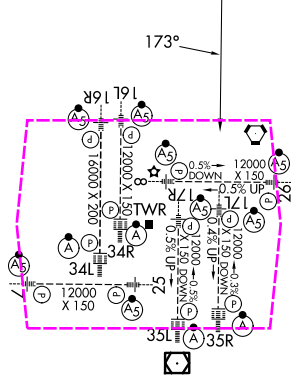
MISSED APPROACH: Climb to 5900 then climbing left turn to 10000 direct LIMEX and hold.

D-ATIS	DENVER APP CON	DENVER TOWER	GND CON	CINC DEL	CPDLC
125.6 379.9 (ARR) 134.025 (DEP)	119.3 307.3 (N) 120.35 379.3 (S)	132.35 239.275	121.35 379.175 (W) 121.85 377.1 (E)	118.75	

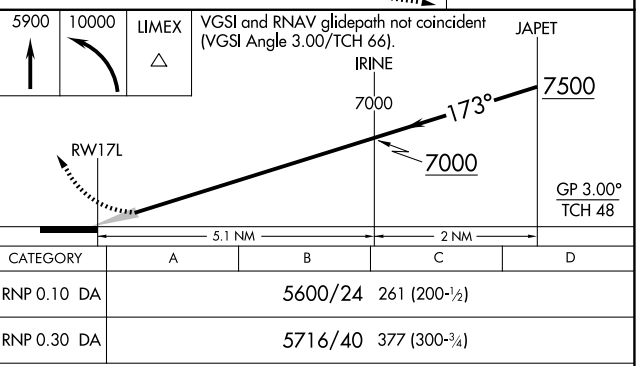
RADAR REQUIRED



ELEV 5434	D	TDZE 5339
-----------	---	-----------



HIRL all Rwys
TDZ/CL Rwys 7, 16L, 16R, 17R,
26, 34L, 34R, 35L, 35R



AUTHORIZATION REQUIRED

DENVER, COLORADO
Orig-C 01FEB18

39°52'N-104°40'W

DENVER INTL (DEN)
RNAV (RNP) Z RWY 17L

SW-1, 07 AUG 2025 to 04 SEP 2025

SW-1, 07 AUG 2025 to 04 SEP 2025