



DENVER, COLORADO


AL-9077 (FAA)

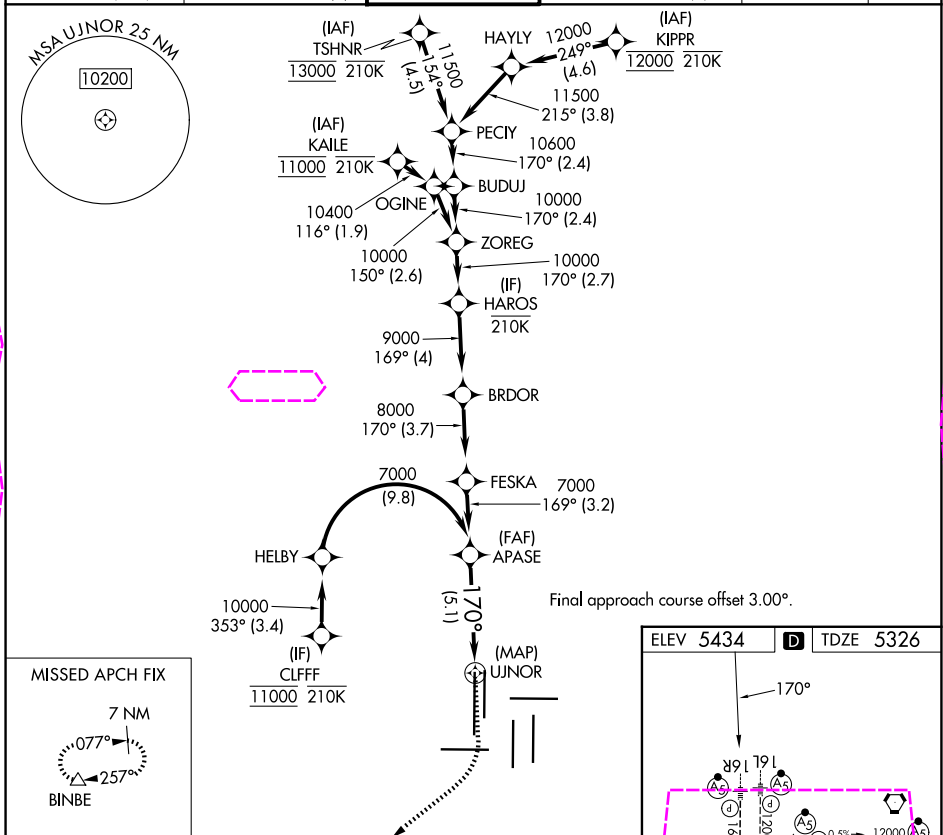
25219

APP CRS <b>170°</b>	Rwy Ldg <b>16000</b>
	TDZE <b>5326</b>
	Apt Elev <b>5434</b>

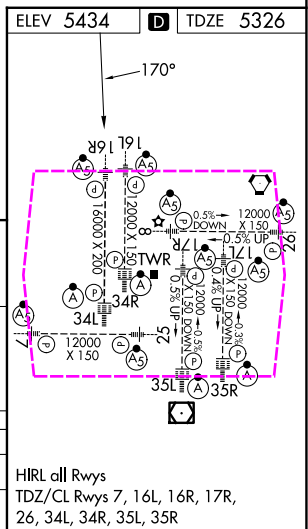
# RNAV (RNP) Z RWY 16R

DENVER INTL (DEN)

RNP AR APCH - GPS.		MALSR 	MISSED APPROACH: Climb to 5900 then climbing right turn to 10000 direct BINBE and hold, continue climb-in-hold to 10000.	
▼ For uncompensated Baro-VNAV systems, procedure NA below -25°C or above 54°C. Simultaneous approach authorized. For inop ALS, increase RNP 0.30 all Cats visibility to RVR 4500.				
D-ATIS <b>125.6 379.9 (ARR)</b> <b>134.025 (DEP)</b>	DENVER APP CON <b>119.3 307.3 (N)</b> <b>120.35 379.3 (S)</b>	DENVER TOWER <b>135.3 351.95</b>	GND CON <b>121.35 379.175 (W)</b> <b>121.85 377.1 (E)</b>	CLNC DEL <b>118.75</b>
				CPDLC



APASE		VGSI and RNAV glidepath not coincident (VGSI Angle 3.00/TCH 71).		5900	10000	BINBE
7000				↑	↗	△
7000		170°		UJNOR		
GP 3.00° TCH 55		See planview for multiple IF locations.				
		5.1 NM				
CATEGORY	A	B	C	D		
RNP 0.30 DA	5597/24 271 (200-½)					
AUTHORIZATION REQUIRED						



DENVER, COLORADO

Amdt 1 12JUN25

39°52'N-104°40'W

DENVER INTL (DEN)

RNAV (RNP) Z RWY 16R

SW-1, 07 AUG 2025 to 04 SEP 2025

SW-1, 07 AUG 2025 to 04 SEP 2025