

DENVER, COLORADO

AL-9077 (FAA)

24361

APP CRS	Rwy Idg	12000
173°	TDZE	5357
	Apt Elev	5434

RNAV (RNP) Z RWY 16L

DENVER INTL (DEN)

For uncompensated Baro-VNAV systems, procedure NA below -25°C (-13°F) or above 45°C (114°F). GPS required. For inoperative MALSR, increase RNP 0.10 all Cats visibility to RVR 4000 and RNP 0.30 all Cats visibility to RVR 5000. Simultaneous approach authorized. Use of FD or AP providing RNAV track guidance required during simultaneous operations.

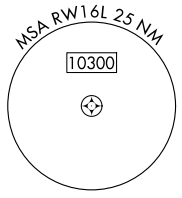
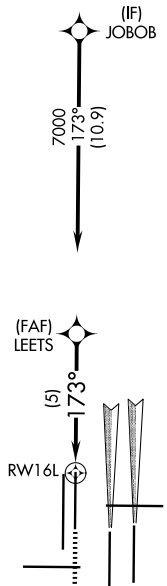
MALSR

MISSED APPROACH: Climb to 5900 then climbing right turn to 10000 direct BINBE and hold, continue climb-in-hold to 10000.

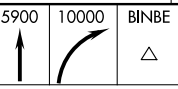
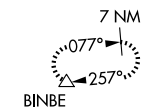
D-ATIS	DENVER APP CON	DENVER TOWER	GND CON	CLNC DEL	CPDLC
125.6 379.9 (ARR) 134.025 (DEP)	119.3 307.3 (N) 120.35 379.3 (S)	135.3 351.95	121.35 379.175 (W) 121.85 377.1 (E)	118.75	

RADAR REQUIRED

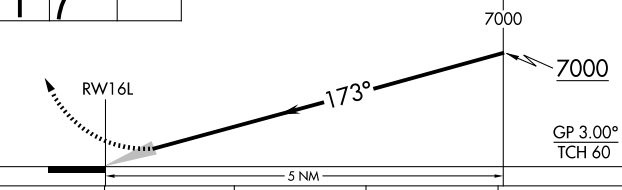
A 6260



MISSED APCH FIX

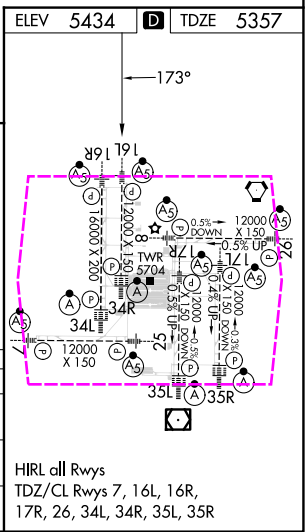


VGSI and RNAV glidepath not coincident (VGSI Angle 3.00/TCH 71).



CATEGORY	A	B	C	D
RNP 0.10 DA		5617/24	260 (200-½)	
RNP 0.30 DA		5683/32	326 (300-¾)	

AUTHORIZATION REQUIRED



DENVER, COLORADO

Orig-C 01FEB18

39°52'N-104°40'W

DENVER INTL (DEN)

RNAV (RNP) Z RWY 16L

SW-1, 10 JUL 2025 to 07 AUG 2025

SW-1, 10 JUL 2025 to 07 AUG 2025

DENVER, COLORADO

AL-9077 (FAA)

25219

APP CRS	Rwy Ldg	12000
173°	TDZE	5357
	Apt Elev	5434

RNAV (RNP) Z RWY 16L

DENVER INTL (DEN)

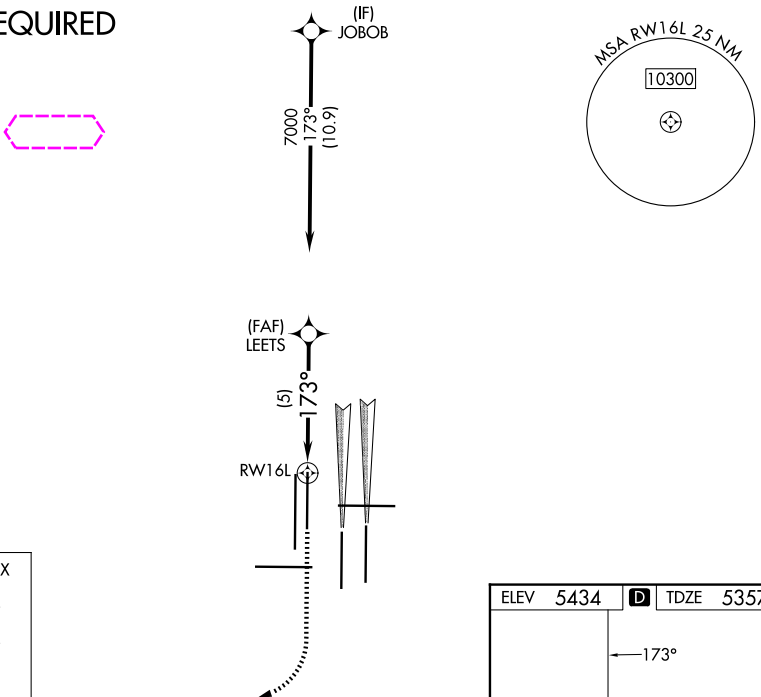
For uncompensated Baro-VNAV systems, procedure NA below -25°C (-13°F) or above 45°C (114°F). GPS required. For inoperative MALSR, increase RNP 0.10 all Cats visibility to RVR 4000 and RNP 0.30 all Cats visibility to RVR 5000. Simultaneous approach authorized. Use of FD or AP providing RNAV track guidance required during simultaneous operations.

MALSR

MISSED APPROACH: Climb to 5900 then climbing right turn to 10000 direct BINBE and hold, continue climb-in-hold to 10000.

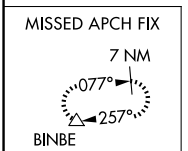
D-ATIS	DENVER APP CON	DENVER TOWER	GND CON	CLNC DEL	CPDLC
125.6 379.9 (ARR)	119.3 307.3 (N)	135.3 351.95	121.35 379.175 (W)	118.75	
134.025 (DEP)	120.35 379.3 (S)		121.85 377.1 (E)		

RADAR REQUIRED

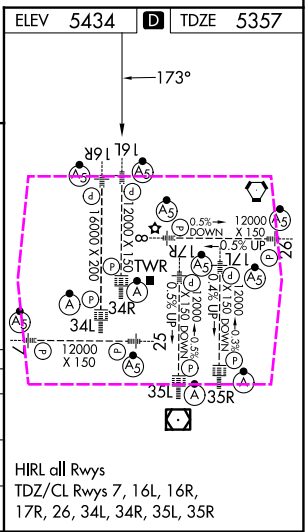


SW-1, 07 AUG 2025 to 04 SEP 2025

SW-1, 07 AUG 2025 to 04 SEP 2025



5900	10000	BINBE	VGSI and RNAV glidepath not coincident (VGSI Angle 3.00/TCH 71).	LEETS
↑	↗	△		7000
CATEGORY	A	B	C	D
RNP 0.10 DA	5617/24 260 (200-½)			
RNP 0.30 DA	5683/32 326 (300-¾)			



AUTHORIZATION REQUIRED

DENVER, COLORADO

Orig-C 01FEB18

39°52'N-104°40'W

DENVER INTL (DEN)

RNAV (RNP) Z RWY 16L