

DENVER, COLORADO

AL-9077 (FAA)


24361

LOC/DME I-FUI <b>108.9</b> Chan <b>26</b>	APP CRS <b>083°</b>	Rwy Idg <b>12000</b> TDZE <b>5354</b> Apt Elev <b>5434</b>
---	------------------------	--

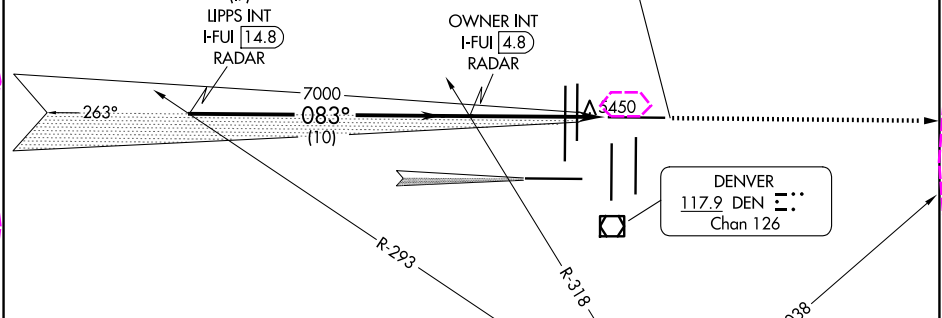
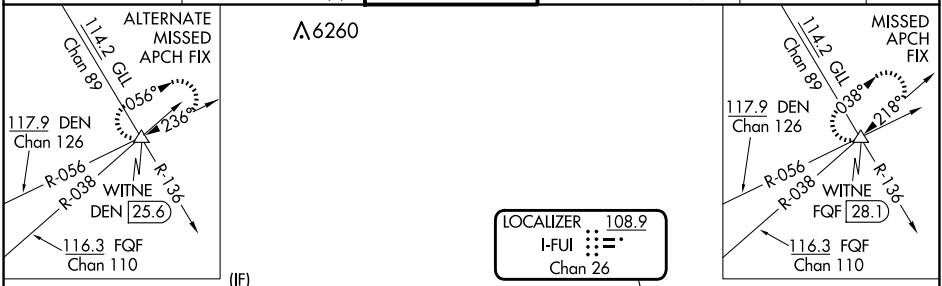
# ILS or LOC RWY 8

DENVER INTL (DEN)

**Simultaneous approach authorized with Rwy 7. For inoperative MALSR, increase S-LOC 8 Cat C/D visibility to RVR 5500. \*\* RVR 1800 authorized with use of FD or AP or HUD to DA.**

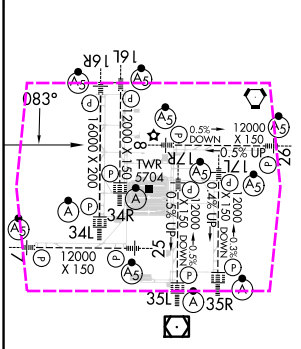
**MALSR**  **MISSED APPROACH:** Climb to 10000 on heading 083° and on FQF VORTAC R-038 to WITNE INT/FQF 28.1 DME and hold.

D-ATIS <b>125.6 379.9 (ARR)</b> <b>134.025 (DEP)</b>	DENVER APP CON <b>119.3 307.3 (N)</b> <b>120.35 379.3 (S)</b>	DENVER TOWER <b>132.35 239.275</b>	GND CON <b>121.35 379.175 (W)</b> <b>121.85 377.1 (E)</b>	CLNC DEL <b>118.75</b>	CPDLC
--	---	---------------------------------------	---	---------------------------	-------

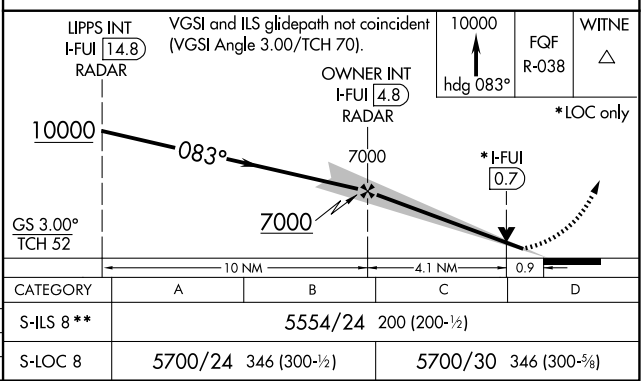


## RADAR REQUIRED

ELEV 5434	<b>D</b>	TDZE 5354
-----------	----------	-----------



TDZ/CL Rwy 7, 16L, 16R, 17R, 26, 34L, 34R, 35L, 35R	HIRL all Rwy 7
FAF to MAP 5 NM	
Knots	60 90 120 150 180
Min:Sec	5:00 3:20 2:30 2:00 1:40



DENVER, COLORADO  
Amdt 5A 11DEC14

39°52'N-104°40'W

# ILS or LOC RWY 8

DENVER INTL (DEN)

SW-1, 10 JUL 2025 to 07 AUG 2025

SW-1, 10 JUL 2025 to 07 AUG 2025

ILS or LOC RWY 8  
DENVER INTL (DEN)

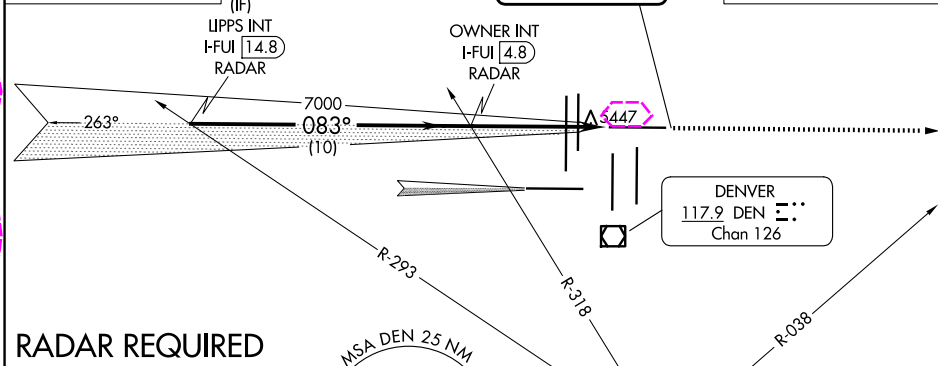
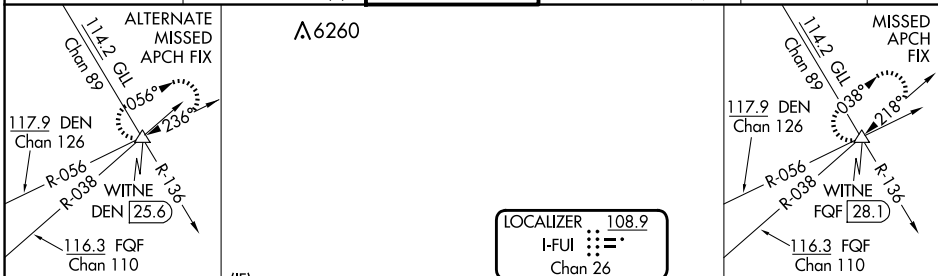
LOC/DME I-FUI <b>108.9</b> Chan <b>26</b>	APP CRS <b>083°</b>	Rwy Ldg <b>12000</b> TDZE <b>5354</b> Apt Elev <b>5434</b>
---	------------------------	--

**T** Simultaneous approach authorized with Rwy 7. For inoperative MALSR, increase S-LOC 8 Cat C/D visibility to RVR 5500.  
\*\* RVR 1800 authorized with use of FD or AP or HUD to DA.



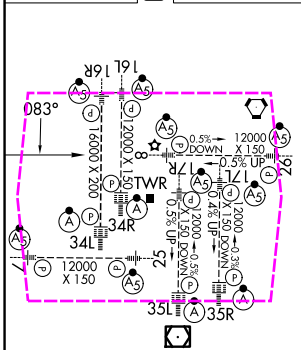
**MISSED APPROACH:** Climb to 10000 on heading 083° and on FQF VORTAC R-038 to WITNE INT/FQF 28.1 DME and hold.

D-ATIS <b>125.6 379.9 (ARR)</b> <b>134.025 (DEP)</b>	DENVER APP CON <b>119.3 307.3 (N)</b> <b>120.35 379.3 (S)</b>	DENVER TOWER <b>132.35 239.275</b>	GND CON <b>121.35 379.175 (W)</b> <b>121.85 377.1 (E)</b>	CLNC DEL <b>118.75</b>	CPDLC
--	---	---------------------------------------	---	---------------------------	-------



## RADAR REQUIRED

ELEV 5434	<b>D</b>	TDZE 5354
-----------	----------	-----------



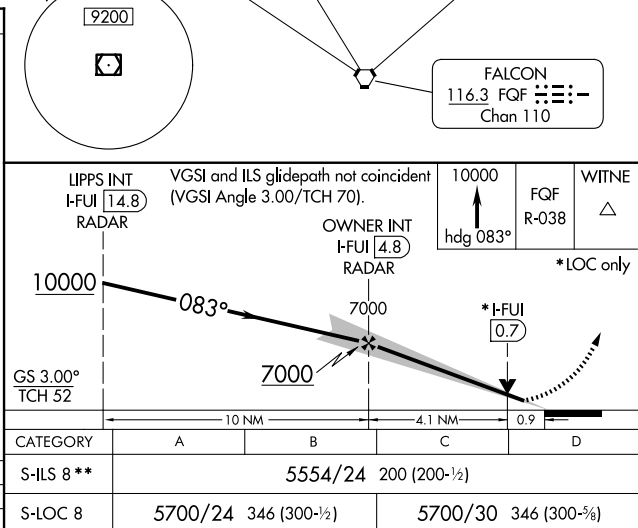
TDZ/CL Rwy 7, 16L, 16R,  
17R, 26, 34L, 34R, 35L, 35R  
HIRL all Rwy

FAF to MAP 5 NM					
Knots	60	90	120	150	180
Min:Sec	5:00	3:20	2:30	2:00	1:40

DENVER, COLORADO

Amdt 5A 11DEC14

39°52'N-104°40'W



DENVER INTL (DEN)

## ILS or LOC RWY 8

SW-1, 07 AUG 2025 to 04 SEP 2025

SW-1, 07 AUG 2025 to 04 SEP 2025