

DENVER, COLORADO

AL-9077 (FAA)

24361

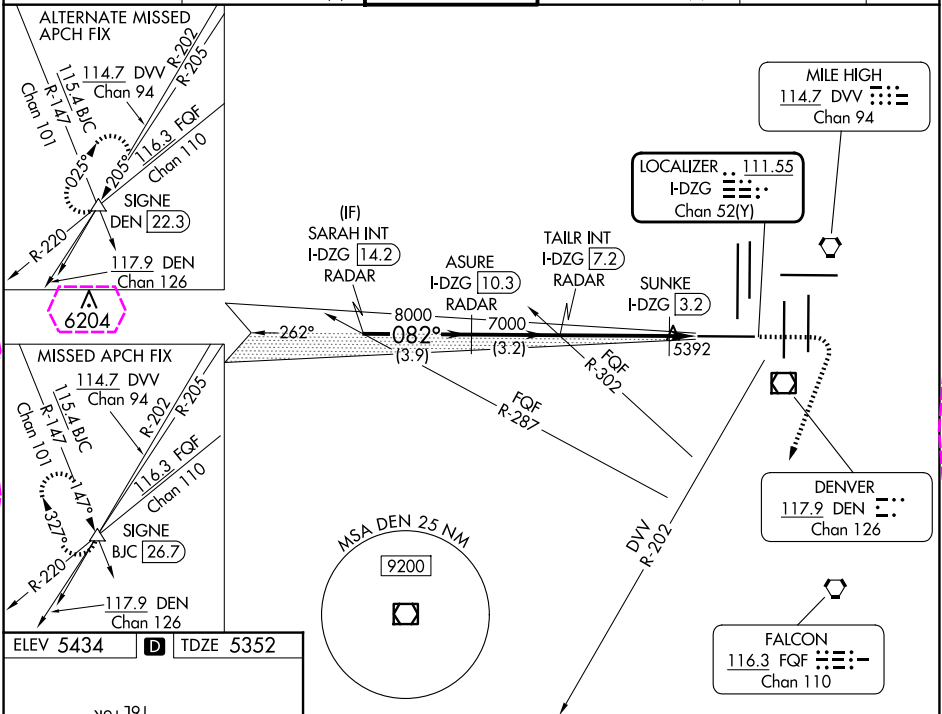
LOC/DME I-DZG 111.55 Chan 52 (Y)	APP CRS 082°	Rwy Idg 12000 TDZE 5352 Apt Elev 5434
--	------------------------	--

ILS or LOC RWY 7

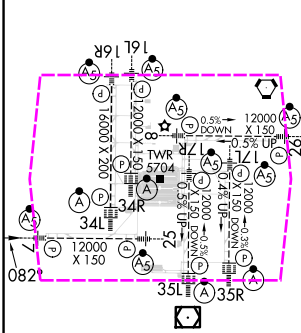
DENVER INTL (DEN)

RADAR required for procedure entry.	MALSR 	MISSED APPROACH: Climb to 5900 then climbing right turn to 11000 on heading 193° and on DVV VORTAC R-202 to SIGNE INT/BJC 26.7 DME and hold. Continue climb-in-hold to 11000.
For inop ALS, increase SUNKE fix Cat C/D visibility to RVR 4500. Simultaneous approach authorized.		

D-ATIS 125.6 379.9 (ARR) 134.025 (DEP)	DENVER APP CON 119.3 307.3 (N) 120.35 379.3 (S)	DENVER TOWER 128.75 273.55	GND CON 121.35 379.175 (W) 121.85 377.1 (E)	CLNC DEL 118.75	CPDLC
--	---	--------------------------------------	---	---------------------------	-------



ELEV 5434	D	TDZE 5352
-----------	----------	-----------



TDZ/CL Rws 7, 16L, 16R, 17R, 26, 34L, 34R, 35L, 35R HIRL all Rws					
FAF to MAP 5 NM					
Knots	60	90	120	150	180
Min:Sec	5:00	3:20	2:30	2:00	1:40

<div>SARAH INT I-DZG 14.2 RADAR</div>				<div>ASURE I-DZG 10.3 RADAR</div>				<div>TAILR INT I-DZG 7.2 RADAR</div>				<div>5900 ↑</div>				<div>11000 hdg 193°</div>				<div>DVV R-202</div>				<div>SIGNE △</div>																																																																																							
<div>9000</div>																<div>082°</div>																<div>8000</div>																<div>7000</div>																<div>7000</div>																<div>5740</div>																<div>5740</div>															
<div>GS 3.00° TCH 55</div>																<div>3.9 NM</div>																<div>3.2 NM</div>																<div>4 NM</div>																<div>1.1 NM</div>																<div></div>																															
CATEGORY				A				B				C				D																																																																																															
S-ILS 7								5552/18				200 (200-½)																																																																																																			
S-LOC 7				5740/24				388 (400-½)				5740/35				388 (400-½)																																																																																															
SUNKE FIX MINIMUMS																																																																																																															
S-LOC 7								5660/24				308 (300-½)																																																																																																			

ILS or LOC RWY 7
DENVER INTL (DEN)

LOC/DME I-DZG 111.55 Chan 52 (Y)	APP CRS 082°	Rwy Ldg 12000 TDZE 5352 Apt Elev 5434
---	------------------------	--

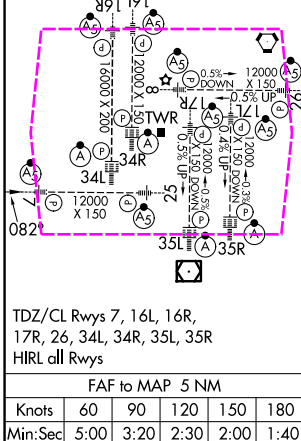
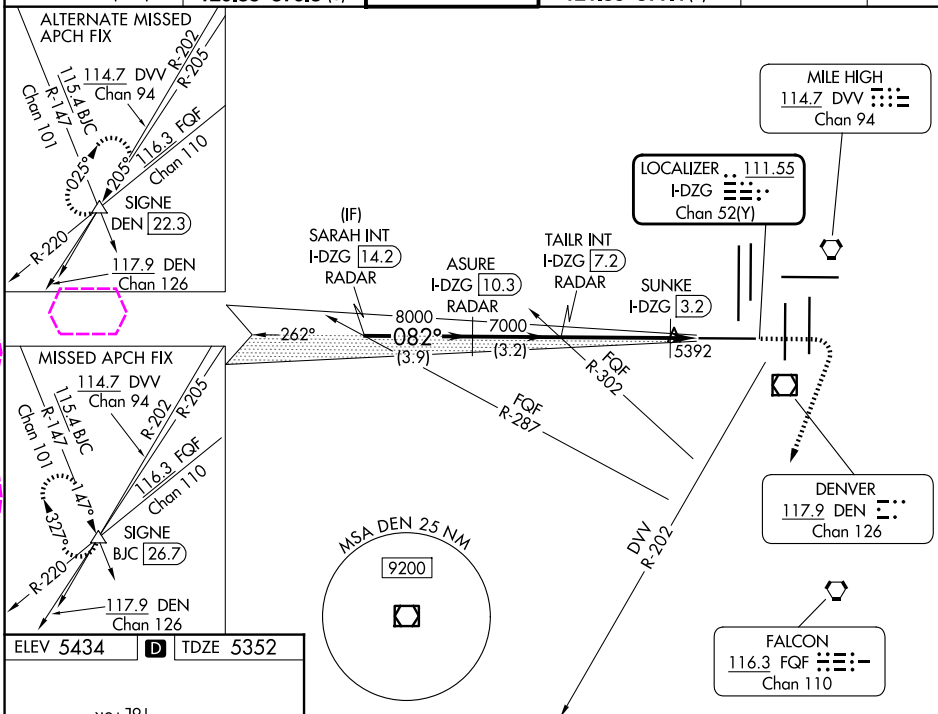
			RADAR required for procedure entry.
--	--	--	-------------------------------------

T For inop ALS, increase SUNKE fix Cat C/D visibility to RVR 4500. Simultaneous approach authorized.



MISSED APPROACH: Climb to 5900 then climbing right turn to 11000 on heading 193° and on DVV VORTAC R-202 to SIGNE INT/BJC 26.7 DME and hold. Continue climb-in-hold to 11000.

D-ATIS	DENVER APP CON	DENVER TOWER	GND CON	CLNC DEL	CPDLC
125.6 379.9 (ARR)	119.3 307.3 (N)		121.35 379.17 (W)		
134.025 (DEP)	120.35 379.3 (S)	128.75 273.55	121.85 377.1 (E)	118.75	



SARAH INT I-DZG <u>14.2</u> RADAR		ASURE I-DZG <u>10.3</u> RADAR		TAILR INT I-DZG <u>7.2</u> RADAR		5900 ↑	11000 hdg 193°	DVV R-202	SIGNE △
9000 082° 8000 7000 5740 GS 3.00° TCH 55 VGS1 and ILS glidepath not coincident (VGS1 Angle 3.00/TCH 68). SUNKE I-DZG <u>3.2</u> I-DZG <u>2.2</u>									
3.9 NM		3.2 NM		4 NM		1.1 NM			
CATEGORY	A		B		C		D		
S-ILS 7	5552/18 200 (200-½)								
S-LOC 7	5740/24 388 (400-½)				5740/35 388 (400-⅝)				
SUNKE FIX MINIMUMS									
S-LOC 7	5660/24 308 (300-½)								

DENVER, COLORADO

Amdt 4 20APR23

39°52'N-104°40'W

DENVER INTL (DEN)

ILS or LOC RWY 7

SW-1, 07 AUG 2025 to 04 SEP 2025

SW-1, 07 AUG 2025 to 04 SEP 2025