

DENVER, COLORADO

AL-9077 (FAA)

24361

LOC/DME I-DPP 110.15 Chan 38(Y)	APP CRS 353°	Rwy Idg 12000 TDZE 5370 Apt Elev 5434
---	------------------------	--

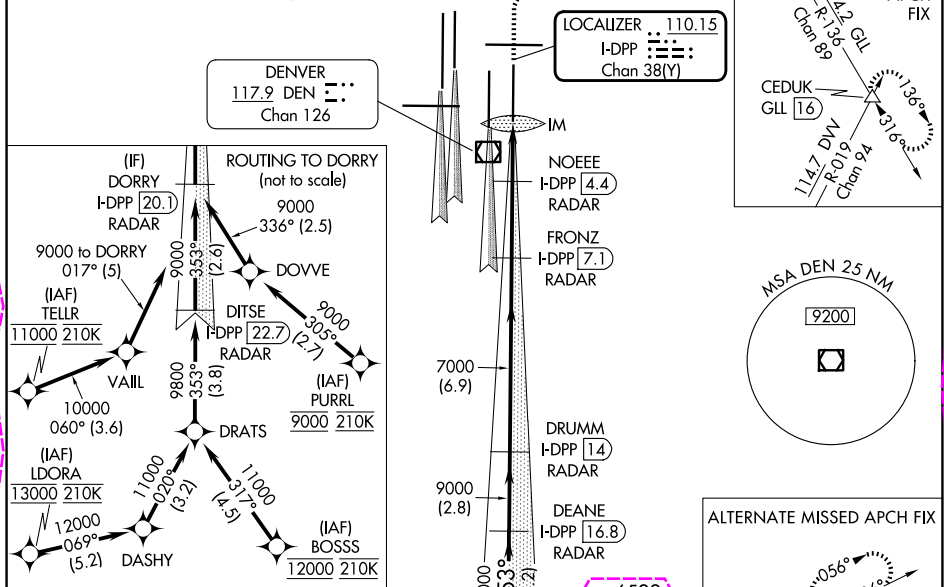
ILS or LOC RWY 35R

DENVER INTL (DEN)

▼ S-LOC 35R DME or RADAR required. Simultaneous approach authorized with Rwy 34L, Rwy 34R, and Rwy 35L.	ALS-F-2 (A)	MISSED APPROACH: Climb to 5800 then climbing right turn to 10000 on heading 048° and on GLL VORTAC R-136 to CEDUK/GLL 16 DME and hold.
---	-----------------------	--

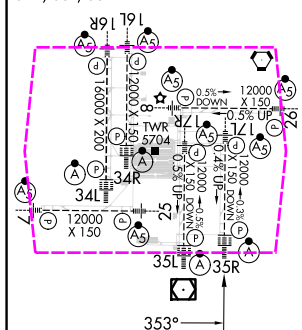
D-ATIS 125.6 379.9 (ARR) 134.025 (DEP)	DENVER APP CON 119.3 307.3 (N) 120.35 379.3 (S)	DENVER TOWER 132.35 239.275	GND CON 121.35 379.175 (W) 121.85 377.1 (E)	CLNC DEL 118.75	CPDLC
--	---	---------------------------------------	---	---------------------------	-------

RADAR or GPS REQUIRED



ELEV 5434 **D** TDZE 5370

HIRL all Rwy's
TDZ/CL Rwy's 7, 16L, 16R, 17R, 26, 34L,
34R, 35L, 35R



FAF to MAP 4.9 NM					
Knots	60	90	120	150	180
Min:Sec	4:54	3:16	2:27	1:58	1:38

DENVER, COLORADO

Amdt 3A 11DEC14

39°52'N-104°40'W

ILS or LOC RWY 35R

SW-1, 07 AUG 2025 to 04 SEP 2025