

DENVER, COLORADO

AL-9077 (FAA)

24361

LOC/DME I-AQD 108.5 Chan 22	APP CRS 353°	Rwy Idg 12000 TDZE 5434 Apt Elev 5434
---	------------------------	--

ILS or LOC RWY 35L

DENVER INTL (DEN)

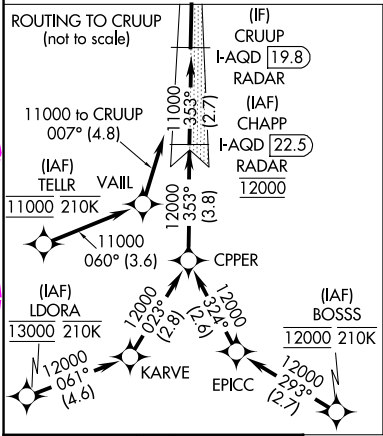
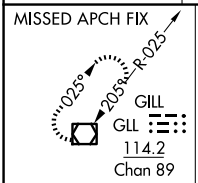
DME or RADAR required for LOC only.
RNAV 1-GPS or RADAR required for procedure entry.

Simultaneous approach authorized.

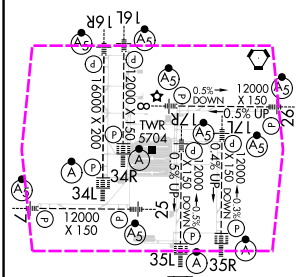
ALSF-2

MISSED APPROACH: Climb to 10000 then right turn direct GLL VOR/DME and hold.

D-ATIS 125.6 379.9 (ARR) 134.025 (DEP)	DENVER APP CON 119.3 307.3 (N) 120.35 379.3 (S)	DENVER TOWER 124.3 322.45	GND CON 121.35 379.175 (W) 121.85 377.1 (E)	CLNC DEL 118.75	CPDLC
--	---	-------------------------------------	---	---------------------------	-------



ELEV 5434	D	TDZE 5434
HIRL all Rwy's TDZ/CL Rwy's 7, 16L, 16R, 17R, 26, 34L, 34R, 35L, 35R		



FAF to MAP 4.7 NM					
Knots	60	90	120	150	180
Min:Sec	4:42	3:08	2:21	1:53	1:34

DENVER, COLORADO
Amdt 5B 19JUL18

39°52'N-104°40'W

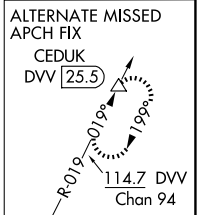
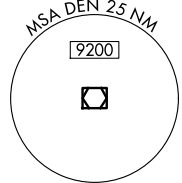
DENVER INTL (DEN)

ILS or LOC RWY 35L

VGSi and ILS glidepath not coincident (VGSi Angle 3.00/TCH 71).					
11000	353°	10000	9000	7000	7000
GS 3.00°	TCH 57				
-3.2 NM - 3.3 NM - 6.5 NM - 2.7 NM - 1.2 NM - 0.8 NM					
CATEGORY	A	B	C	D	
S-ILS 35L	5634/18 200 (200-½)				
S-LOC 35L	5760/24 326 (400-½)		5760/26 326 (400-½)		

LOCALIZER 108.5
I-AQD
Chan 22

DENVER
117.9 DEN
Chan 126



SW-1, 10 JUL 2025 to 07 AUG 2025

SW-1, 10 JUL 2025 to 07 AUG 2025

ILS or LOC RWY 35L
DENVER INTL (DEN)

ILS or LOC RWY 35L