

DENVER INTL (DEN)

LOC/DME I-OUF <u>111.1</u> Chan 48	APP CRS 353°	Rwy Idg 12000 TDZE 5354 Apt Elev 5434
--	------------------------	--

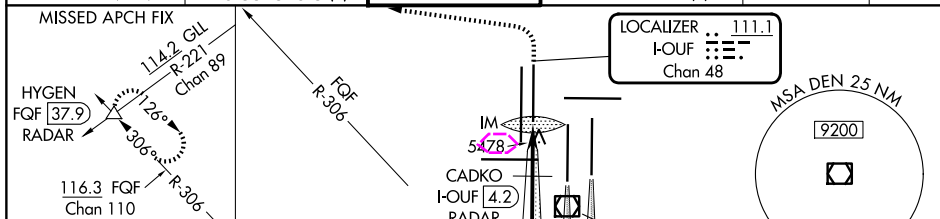
T S-LOC 34R DME or RADAR required. Simultaneous approach authorized with Rwy 35L/R. For inoperative ALSF, increase S-LOC Cat C/D visibility to RVR 5500.

ALSF-2

MISSED APPROACH: Climb to 5800 then climbing left turn to 10000 on heading 270° and on FQF VORTAC R-306 to HYGEN/FQF 37.9 DME/RADAR and hold.

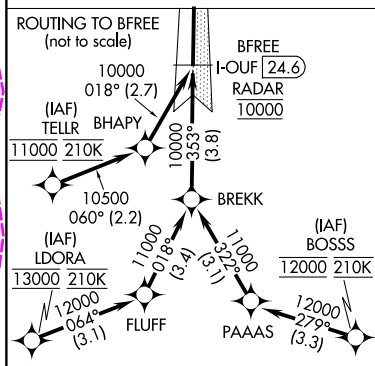
D-ATIS	DENVER APP CON	DENVER TOWER	GND CON	CLNC DEL	CPDLC
125.6 379.9 (ARR)	119.3 307.3 (N)	135.3 351.95	121.35 379.175 (W)	118.75	
134.025 (DEP)	120.35 379.3 (S)		121.85 377.1 (E)		

MISSED APCH FIX



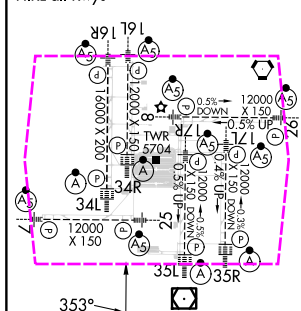
RADAR or GPS REQUIRED

ROUTING TO BFREE
(not to scale)



ELEV 5434	D	TDZE 5354
-----------	----------	-----------

TDZ/CL Rwy 7, 16L, 16R, 17R, 26, 34L,
34R, 35L, 35R
HIRL qll Rwy 7



FAF to MAP 5 NM

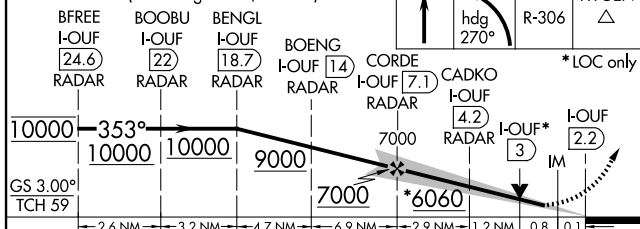
Knots	60	90	120	150	180
Min:Sec	5:00	3:20	2:30	2:00	1:40

DENVER, COLORADO

Amdt 3A 11DEC14

39°52'N-104°40'W

VGSI and ILS glidepath not coincident
(VGSI Angle 3.00/TCH 63).



CATEGORY	A	B	C	D
S-ILS 34R	5554/18 200 (200-½)			
S-LOC 34R	5700/24 346 (300-½)		5700/30 346 (300-¾)	

DENVER INTL (DEN)

ILS or LOC RWY 34R

SW-1, 10 JUL 2025 to 07 AUG 2025

SW-1, 10 JUL 2025 to 07 AUG 2025

DENVER INTL (DEN)

LOC/DME I-OUF <u>111.1</u> Chan 48	APP CRS 353°	Rwy Ldg 12000 TDZE 5354 Apt Elev 5434
--	-----------------	---

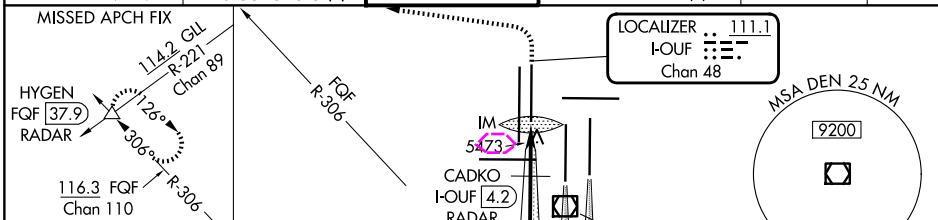
T S-LOC 34R DME or RADAR required. Simultaneous approach authorized with Rwy 35L/R. For inoperative ALSF, increase S-LOC Cat C/D visibility to RVR 5500.

ALSF-2

MISSED APPROACH: Climb to 5800 then climbing left turn to 10000 on heading 270° and on FQF VORTAC R-306 to HYGEN/FQF 37.9 DME/RADAR and hold.

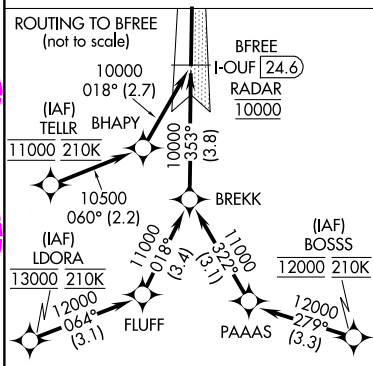
D-ATIS	DENVER APP CON	DENVER TOWER	GND CON	CLNC DEL	CPDLC
125.6 379.9 (ARR)	119.3 307.3 (N)		121.35 379.175 (W)		
134.025 (DEP)	120.35 379.3 (S)	135.3 351.95	121.85 377.1 (E)	118.75	

MISSED APCH FIX



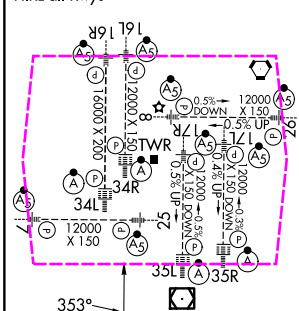
RADAR or GPS REQUIRED

ROUTING TO BFREE
(not to scale)



ELEV 5434	D	TDZE 5354
-----------	----------	-----------

TDZ/CL Rwy 7, 16L, 16R, 17R, 26, 34L,
34R, 35L, 35R
HIRL all Rwy



FAF to MAP 5 NM

Knots	60	90	120	150	180
Min:Sec	5:00	3:20	2:30	2:00	1:40

DENVER, COLORADO

Amdt 3A 11DEC14

39°52'N-104°40'W

VGSI and ILS glidepath not coincident
(VGSI Angle 3.00/TCH 63).

Diagram illustrating the S-LOC approach for Runway 34R at Kona International Airport. The diagram shows the glide path (353°) and the final approach (3°) leading to the runway. Key altitudes and distances are marked along the path.

Altitudes and Distances:

- 10000 ft (353° heading)
- 9000 ft
- 7000 ft
- 6060 ft
- 3° glide path

Radar Stations and Ranges:

- BFREE I-OUF 24.6 RADAR
- BOOBU I-OUF 22 RADAR
- BENG I-OUF 18.7 RADAR
- BOENG I-OUF 14 RADAR
- CORDE I-OUF 7.1 RADAR
- CADKO I-OUF 4.2 RADAR
- I-OUF* 3
- I-OUF 2.2

Table Data:

CATEGORY	A	B	C	D
S-ILS 34R	5554/18 200 (200-½)			
S-LOC 34R	5700/24 346 (300-½)		5700/30 346 (300-¾)	

DENVER INTL (DEN)

ILS or LOC RWY 34R

SW-1, 07 AUG 2025 to 04 SEP 2025

SW-1, 07 AUG 2025 to 04 SEP 2025