

DENVER, COLORADO

AL-9077 (FAA)

24361

LOC/DME I-DXU 111.9 Chan 56	APP CRS 353°	Rwy Idg 16000 TDZE 5327 Apt Elev 5434
-------------------------------------------------	------------------------	------------------------------------------------------------------

ILS or LOC RWY 34L

DENVER INTL (DEN)

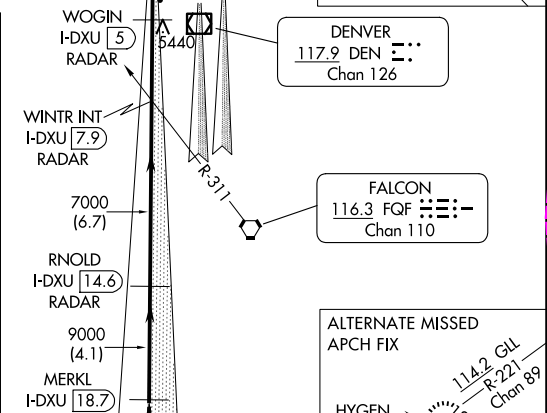
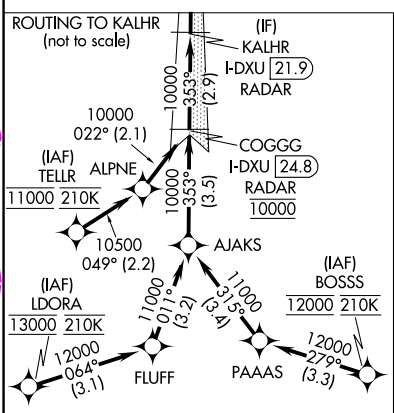
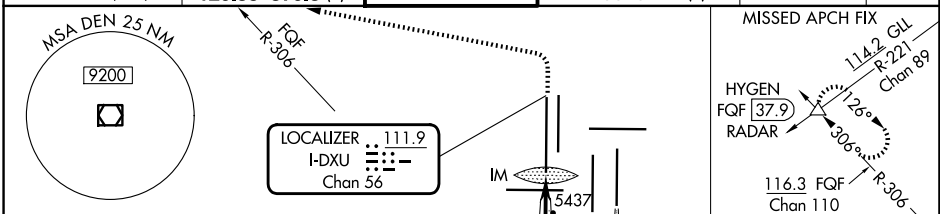
RNAV-1 GPS or RADAR required for procedure entry. From LDORA, BOSSS, TELL: RNAV-1 GPS required. DME or RADAR required.

Simultaneous approach authorized with Rwy 35L/R. For inop ALS, increase S-LOC Cat C and D visibility to RVR 5500.

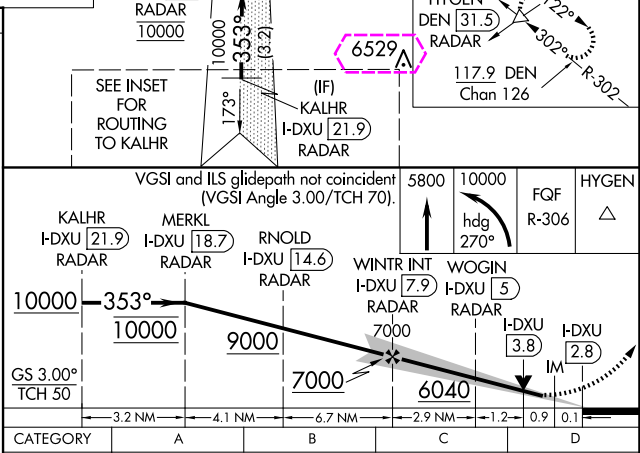
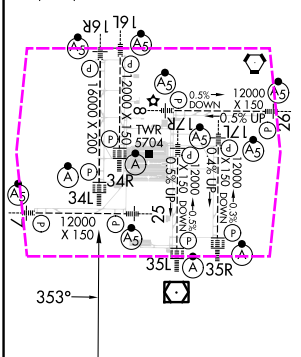
ALSF-2

MISSED APPROACH: Climb to 5800 then climbing left turn to 10000 on heading 270° and FQF VORTAC R-306 to HYGEN/FQF 37.9 DME/RADAR and hold.

D-ATIS 125.6 379.9 (ARR) 134.025 (DEP)	DENVER APP CON 119.3 307.3 (N) 120.35 379.3 (S)	DENVER TOWER 135.3 351.95	GND CON 121.35 379.175 (W) 121.85 377.1 (E)	CLNC DEL 118.75	CPDLC
------------------------------------------------------------	---------------------------------------------------------------------	-------------------------------------	-----------------------------------------------------------------	---------------------------	-------



ELEV 5434	D	TDZE 5327
HIRL all Rwys		
TDZ/CL Rlys 7, 16L, 16R, 17R, 26, 34L, 34R, 35L, 35R		



FAF to MAP 5.1 NM					
Knots	60	90	120	150	180
Min:Sec	5:06	3:24	2:33	2:02	1:42
S-ILS 34L	5527/18 200 (100-½)				
S-LOC 34L	5700/24 373 (300-½) 5700/35 373 (300-¾)				

DENVER, COLORADO
Amdt 2C 07OCT21

39°52'N-104°40'W

DENVER INTL (DEN) ILS or LOC RWY 34L

SW-1, 10 JUL 2025 to 07 AUG 2025

SW-1, 10 JUL 2025 to 07 AUG 2025

DENVER, COLORADO

AL-9077 (FAA)

25219

LOC/DME I-DXU 111.9 Chan 56	APP CRS 353°	Rwy Ldg 16000 TDZE 5327 Apt Elev 5434
-------------------------------------------------	------------------------	------------------------------------------------------------------

ILS or LOC RWY 34L

DENVER INTL (DEN)

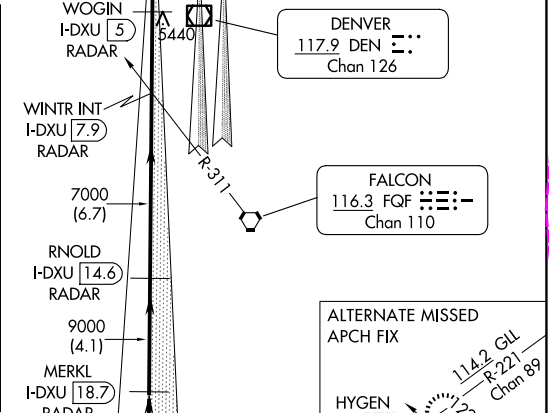
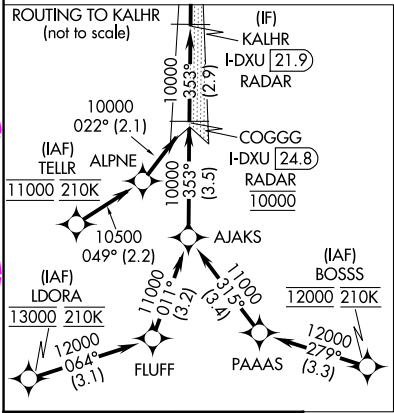
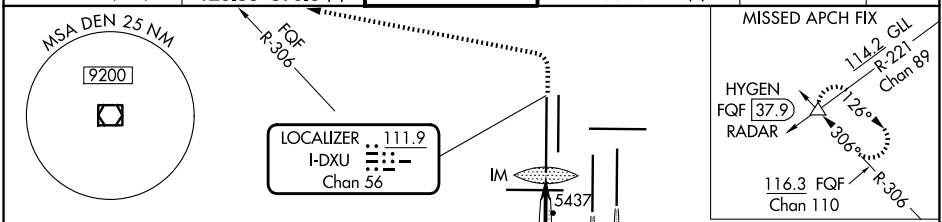
RNAV-1 GPS or RADAR required for procedure entry. From LDORA, BOSSS, TELL: RNAV-1 GPS required. DME or RADAR required.

Simultaneous approach authorized with Rwy 35L/R. For inop ALS, increase S-LOC Cat C and D visibility to RVR 5500.

ALSF-2

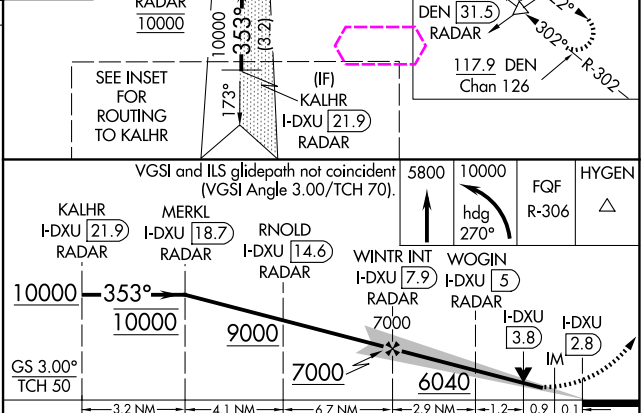
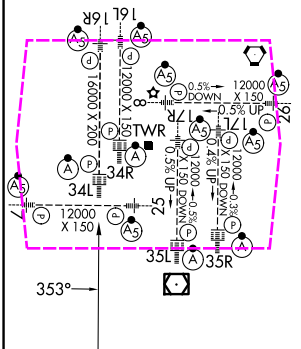
MISSED APPROACH: Climb to 5800 then climbing left turn to 10000 on heading 270° and FQF VORTAC R-306 to HYGEN/FQF 37.9 DME/RADAR and hold.

D-ATIS 125.6 379.9 (ARR) 134.025 (DEP)	DENVER APP CON 119.3 307.3 (N) 120.35 379.3 (S)	DENVER TOWER 135.3 351.95	GND CON 121.35 379.175 (W) 121.85 377.1 (E)	CLNC DEL 118.75	CPDLC
------------------------------------------------------------	---------------------------------------------------------------------	-------------------------------------	-----------------------------------------------------------------	---------------------------	-------



ELEV 5434	TDZE 5327
-----------	-----------

HIRL all Rwys
TDZ/CL Rlys 7, 16L, 16R, 17R, 26, 34L, 34R, 35L, 35R



FAF to MAP 5.1 NM	S-ILS 34L	5527/18 200 (100-½)
Knots 60 90 120 150 180	S-LOC 34L	5700/24 373 (300-½) 5700/35 373 (300-¾)
Min:Sec 5:06 3:24 2:33 2:02 1:42		

DENVER, COLORADO
Amdt 2C 07OCT21

39°52'N-104°40'W

DENVER INTL (DEN)

ILS or LOC RWY 34L