

DENVER, COLORADO

AL-9077 (FAA)

24361

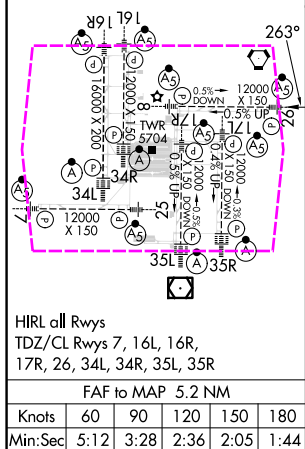
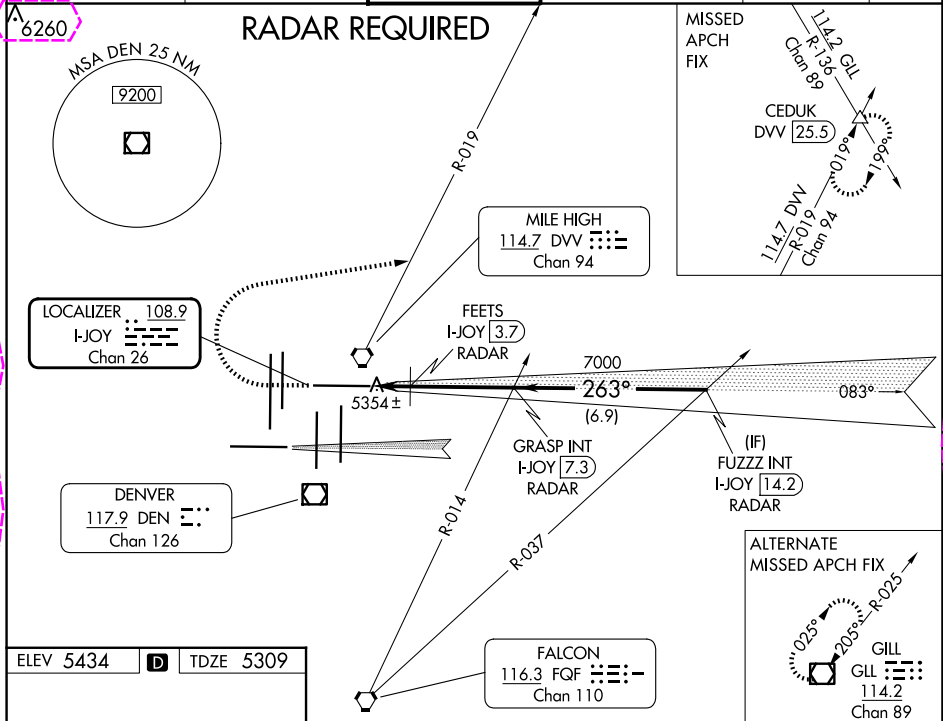
LOC/DME I-JOY 108.9 Chan 26	APP CRS 263°	Rwy Idg 12000 TDZE 5309 Apt Elev 5434
--	------------------------	--

ILS or LOC RWY 26

DENVER INTL (DEN)

Simultaneous approach authorized with Rwy 25.	MALSR	MISSED APPROACH: Climb to 5900 then climbing right turn to 9000 on heading 070° and on DVV VORTAC R-019 to CEDUK INT/DVV 25.5 DME and hold.
---	-------	---

D-ATIS 125.6 379.9 (ARR) 134.025 (DEP)	DENVER APP CON 119.3 307.3 (N) 120.35 379.3 (S)	DENVER TOWER 132.35 239.275	GND CON 121.35 379.175 (W) 121.85 377.1 (E)	CLNC DEL 118.75	CPDLC
--	---	---------------------------------------	---	---------------------------	-------



5900	9000	DVV R-019	CEDUK	VGSI and ILS glidepath not coincident (VGSI Angle 3.00/TCH 70).	FUZZZ INT I-JOY 14.2 RADAR
*LOC only	FEETS I-JOY 3.7 RADAR	*I-JOY 3	GRASP INT I-JOY 7.3 RADAR	7000	GS 3.00° TCH 55
0.8	0.7	3.7 NM	6.9 NM		
CATEGORY	A	B	C	D	
S-ILS 26	5509/18 200 (100-½)				
S-LOC 26	5820/24	511 (400-½)	5820/55	511 (400-1)	
FEETS FIX MINIMUMS					
S-LOC 26	5620/24	311 (200-½)	5620/26	311 (200-½)	

DENVER, COLORADO
Amdt 3A 11DEC14

39°52'N-104°40'W

ILS or LOC RWY 26

SW-1, 10 JUL 2025 to 07 AUG 2025

SW-1, 10 JUL 2025 to 07 AUG 2025

