

DENVER, COLORADO

AL-9077 (FAA)

24361

LOC/DME I-ERP 111.55 Chan 52(Y)	APP CRS 263°	Rwy Idg 12000 TDZE 5355 Apt Elev 5434
---	------------------------	--

ILS or LOC RWY 25

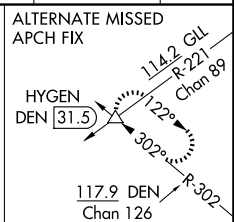
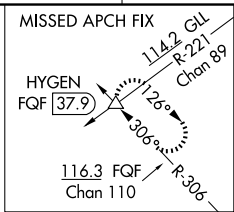
DENVER INTL (DEN)

Simultaneous approach authorized with Rwy 26. For inoperative MALSR, increase S-LOC 25 Cat C and D visibility to RVR 5500. **RVR 1800 authorized with use of FD or AP or HUD to DA.

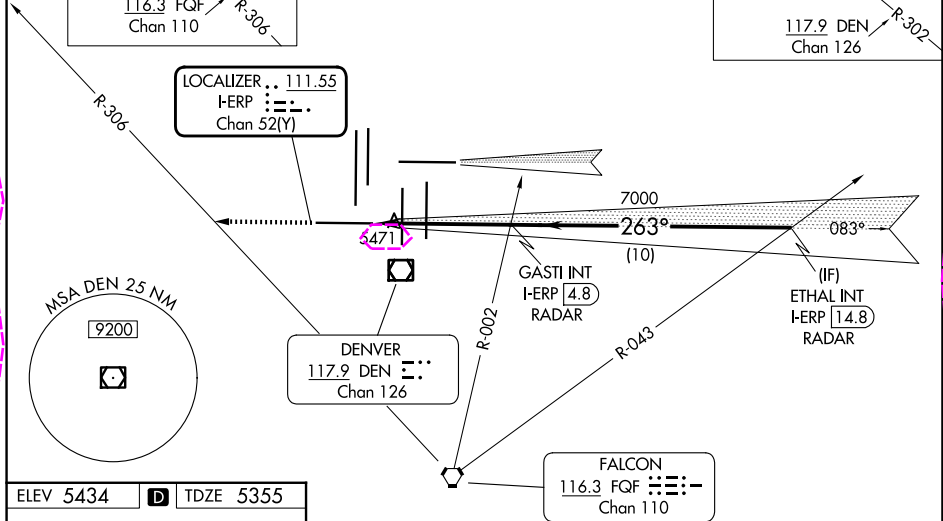


MISSED APPROACH: Climb to 10000 on heading 263° and on FQF VORTAC R-306 to HYGEN INT/FQF 37.9 DME and hold.

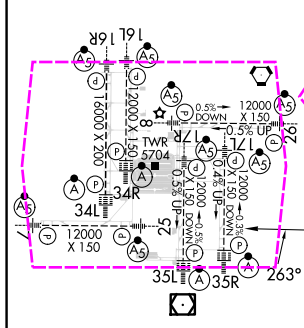
D-ATIS 125.6 379.9 (ARR) 134.025 (DEP)	DENVER APP CON 119.3 307.3 (N) 120.35 379.3 (S)	DENVER TOWER 128.75 273.55	GND CON 121.35 379.175 (W) 121.85 377.1 (E)	CLNC DEL 118.75	CPDLC
--	---	--------------------------------------	---	---------------------------	-------



LOCALIZER .. **111.55**
I-ERP **111.55**
Chan **52(Y)**



ELEV 5434	D	TDZE 5355
------------------	----------	------------------



HIRL all Rwy	7	16L	16R	17R	26	34L	34R	35L	35R
FAF to MAP 5 NM									
Knots	60	90	120	150	180				
Min:Sec	5:00	3:20	2:30	2:00	1:40				

Δ 6270 ±

RADAR REQUIRED

10000 hdg 263° *LOC only	FQF R-306	HYGEN △	VGSI and ILS glidepath not coincident (VGSI Angle 3.00/TCH 83).	ETHAL INT I-ERP 14.8 RADAR
*I-ERP 0.7	GASTI INT I-ERP 4.8 RADAR	7000	7000	10000
0.9 NM	4.1 NM	10 NM	GS 3.00° TCH 55	
CATEGORY	A	B	C	D
S-ILS 25 **	5555/24 200 (200-½)			
S-LOC 25	5720/24 365 (300-½)		5720/35 365 (300-⅝)	

DENVER, COLORADO
Amdt 3A 11DEC14

39°52'N-104°40'W

ILS or LOC RWY 25

DENVER INTL (DEN)

SW-1, 10 JUL 2025 to 07 AUG 2025

SW-1, 10 JUL 2025 to 07 AUG 2025

DENVER, COLORADO

AL-9077 (FAA)

25219

LOC/DME I-ERP 111.55 Chan 52(Y)	APP CRS 263°	Rwy Ldg TDZE 5355 Apt Elev 5434
---	------------------------	---

ILS or LOC RWY 25

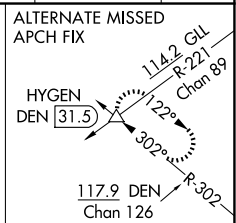
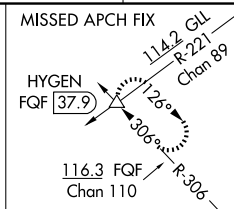
DENVER INTL (DEN)

Simultaneous approach authorized with Rwy 26. For inoperative MALSR, increase S-LOC 25 Cat C and D visibility to RVR 5500. **RVR 1800 authorized with use of FD or AP or HUD to DA.

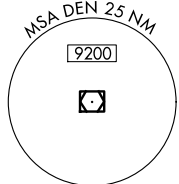


MISSED APPROACH: Climb to 10000 on heading 263° and on FQF VORTAC R-306 to HYGEN INT/FQF 37.9 DME and hold.

D-ATIS 125.6 379.9 (ARR) 134.025 (DEP)	DENVER APP CON 119.3 307.3 (N) 120.35 379.3 (S)	DENVER TOWER 128.75 273.55	GND CON 121.35 379.175 (W) 121.85 377.1 (E)	CLNC DEL 118.75	CPDLC
--	---	--------------------------------------	---	---------------------------	-------



LOCALIZER .. **111.55**
I-ERP **111.55**
Chan **52(Y)**



DENVER
117.9 DEN
Chan **126**

FALCON
116.3 FQF
Chan **110**

ELEV 5434	D	TDZE 5355
------------------	----------	------------------

