

DENVER, COLORADO

AL-9077 (FAA)

24361

LOC/DME I-ACX 108.5 Chan 22	APP CRS 173°	Rwy Idg 12000 TDZE 5392 Apt Elev 5434
---	------------------------	--

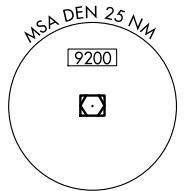
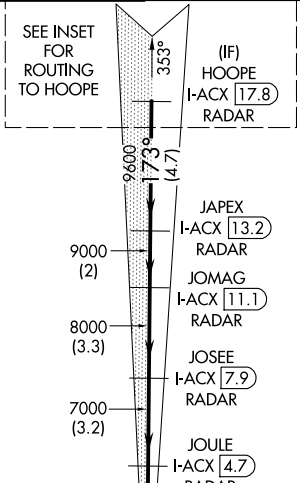
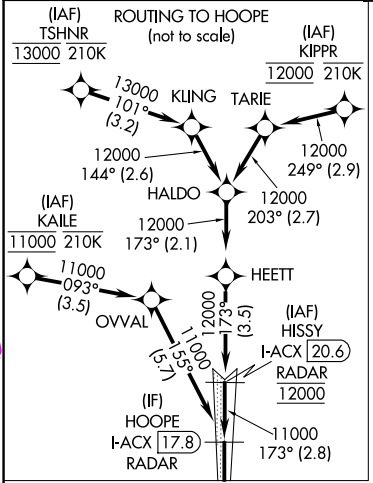
ILS or LOC RWY 17R

DENVER INTL (DEN)

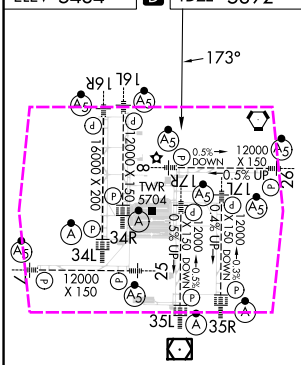
DME or RADAR required for LOC only.
RNAV 1-GPS or RADAR required for procedure entry.
Simultaneous approach authorized. For inop ALS, increase S-17R LOC Cat C/D visibility to RVR 5500.

MALSR
MISSED APPROACH: Climb to 10000 on heading 173° and on FQF VORTAC R-197 to HOHUM INT/ FQF 22.5 DME and hold.

D-ATIS 125.6 379.9 (ARR) 134.025 (DEP)	DENVER APP CON 119.3 307.3 (N) 120.35 379.3 (S)	DENVER TOWER 124.3 322.45	GND CON 121.35 379.175 (W) 121.85 377.1 (E)	CLNC DEL 118.75	CPDLC
--	---	-------------------------------------	---	---------------------------	-------



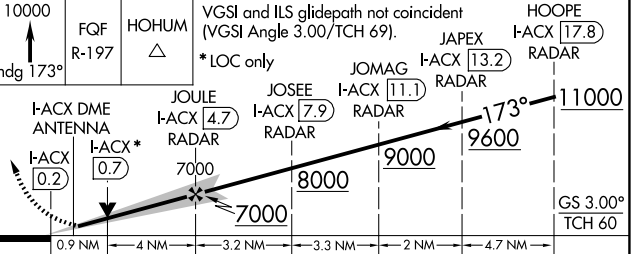
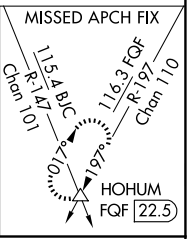
ELEV 5434	D	TDZE 5392
------------------	----------	------------------



TDZ/CL Rwy's 7, 16L, 16R, 17R, 26, 34L, 34R, 35L, 35R
HIRL all Rwy's

LOCALIZER **108.5**
I-ACX
Chan 22

DENVER
117.9 DEN
Chan 126



FAF to MAP 4.9 NM					
Knots	60	90	120	150	180
Min:Sec	4:54	3:16	2:27	1:58	1:38

CATEGORY	A	B	C	D
S-ILS 17R	5592/18 200 (200-1/2)			
S-LOC 17R	5720/24 328 (300-1/2)		5720/30 328 (300-3/8)	

DENVER, COLORADO

Amdt 3B 19JUL18

39°52'N-104°40'W

DENVER INTL (DEN)

ILS or LOC RWY 17R

SW-1, 10 JUL 2025 to 07 AUG 2025

SW-1, 10 JUL 2025 to 07 AUG 2025

DENVER, COLORADO

AL-9077 (FAA)

25219

LOC/DME I-ACX 108.5 Chan 22	APP CRS 173°	Rwy Ldg 12000 TDZE 5392 Apt Elev 5434
---	------------------------	--

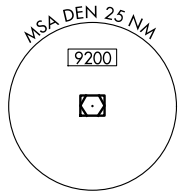
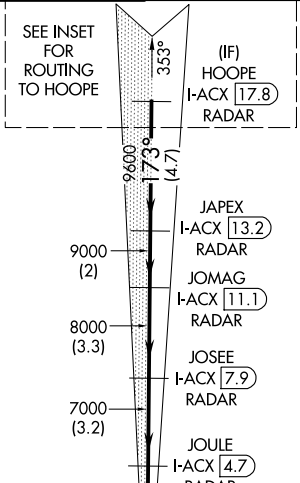
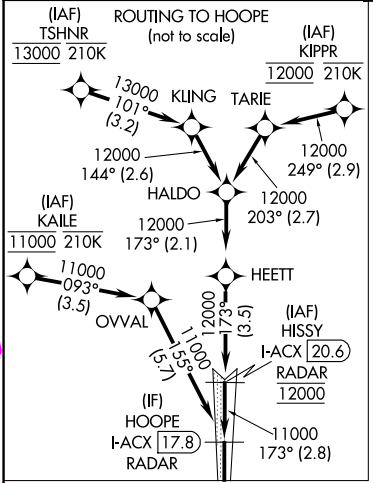
ILS or LOC RWY 17R

DENVER INTL (DEN)

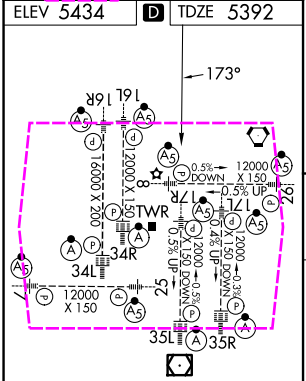
DME or RADAR required for LOC only.
RNAV 1-GPS or RADAR required for procedure entry.
Simultaneous approach authorized. For inop ALS, increase S-17R LOC Cat C/D visibility to RVR 5500.

MALSR
MISSED APPROACH: Climb to 10000 on heading 173° and on FQF VORTAC R-197 to HOHUM INT/ FQF 22.5 DME and hold.

D-ATIS 125.6 379.9 (ARR) 134.025 (DEP)	DENVER APP CON 119.3 307.3 (N) 120.35 379.3 (S)	DENVER TOWER 124.3 322.45	GND CON 121.35 379.175 (W) 121.85 377.1 (E)	CLNC DEL 118.75	CPDLC
--	---	-------------------------------------	---	---------------------------	-------



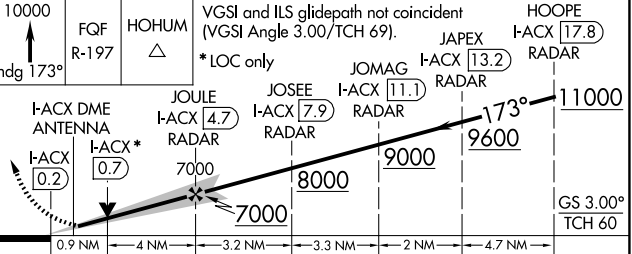
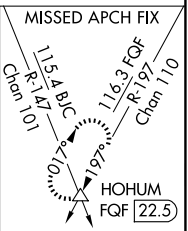
ELEV 5434	D	TDZE 5392
------------------	----------	------------------



TDZ/CL Rwy 7, 16L, 16R, 17R, 26, 34L, 34R, 35L, 35R
HIRL all Rwy

LOCALIZER **108.5**
I-ACX
Chan 22

DENVER **117.9** DEN
Chan 126



CATEGORY	A	B	C	D
S-ILS 17R	5592/18 200 (200-1/2)			
S-LOC 17R	5720/24 328 (300-1/2)		5720/30 328 (300-3/8)	

DENVER, COLORADO

Amdt 3B 19JUL18

39°52'N-104°40'W

DENVER INTL (DEN)

ILS or LOC RWY 17R

SW-1, 07 AUG 2025 to 04 SEP 2025

SW-1, 07 AUG 2025 to 04 SEP 2025