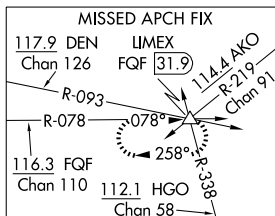
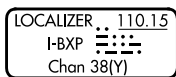
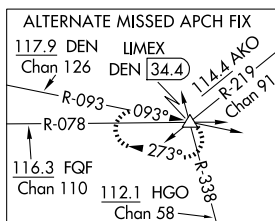
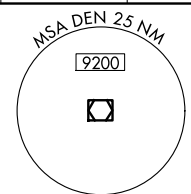



ILS or LOC RWY 17L
DENVER INTL (DEN)

MISSED APPROACH: Climb to 5900 then climbing left turn to 10000 on heading 120° and FQF VORTAC R-078 to LIMEX INT/FQF 31.9 DME and hold.

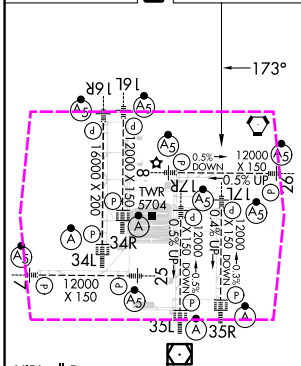
CPDLC



DENVER
117.9 DEN 
Chan 126

1

ELEV 5434	D	TDZE 5339
-----------	----------	-----------



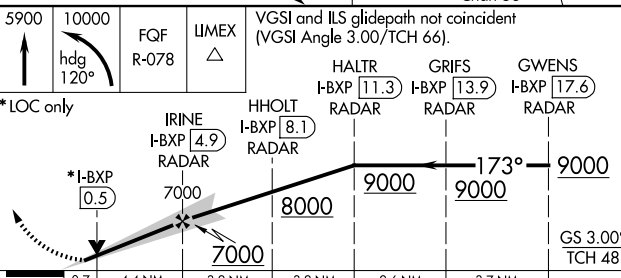
TDZ/CL Rwys 7, 16L, 16R,
17R, 26, 34L, 34R, 35L, 35R

FAF to MAP 5.1 NM

Knots	60	90	120	150	180
Min:Sec	5:06	3:24	2:33	2:02	1:42

DENVER, COLORADO
Amdt 4A 11DEC14

**RADAR or GPS
REQUIRED**



CATEGORY	A	B	C	D
S-ILS 17L	# 5539/24 200 (200-½)			
S-LOC 17L	5620/24 281 (200-½)			

39°52'N-104°40'W

DENVER INTL (DEN)
ILS or LOC RWY 17L

SW-1, 10 JUL 2025 to 07 AUG 2025

SW-1, 10 JUL 2025 to 07 AUG 2025

DENVER, COLORADO

AL-9077 (FAA)

25219

LOC/DME I-BXP 110.15 Chan 38 (Y)	APP CRS 173°	Rwy Ldg TDZE 5339 Apt Elev 5434
--	------------------------	---

ILS or LOC RWY 17L

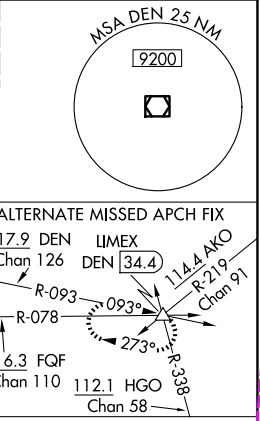
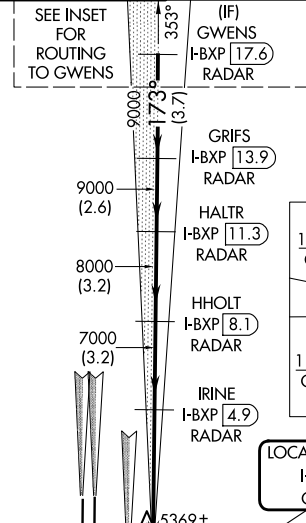
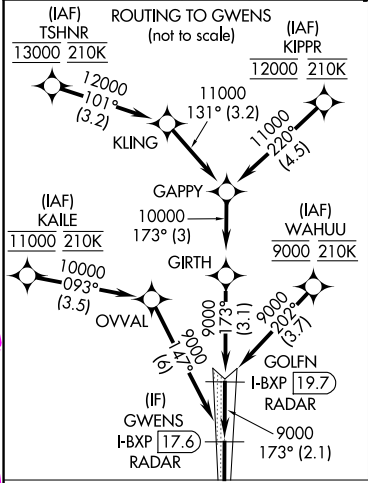
DENVER INTL (DEN)

For inoperative MALSR, increase S-LOC Cts C/D visibility to RVR 4500.
S-LOC 17L DME or RADAR required. Simultaneous approaches
authorized with Rwy 17R and 16L/16R.
RVR 1800 authorized with the use of FD or AP or HUD to DA.

MALSR

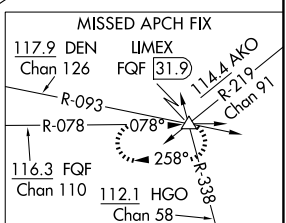
MISSED APPROACH: Climb to 5900
then climbing left turn to 10000 on
heading 120° and FQF VORTAC R-078
to UMEX INT/FQF 31.9 DME and hold.

D-ATIS 125.6 379.9 (ARR) 134.025 (DEP)	DENVER APP CON 119.3 307.3 (N) 120.35 379.3 (S)	DENVER TOWER 132.35 239.275	GND CON 121.35 379.175 (W) 121.85 377.1 (E)	CLNC DEL 118.75	CPDLC
--	---	---------------------------------------	---	---------------------------	-------

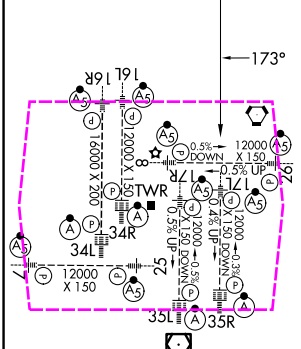


DENVER
117.9 DEN
Chan 126

LOCALIZER, 110.15
I-BXP
Chan 38(Y)



ELEV 5434	D	TDZE 5339
-----------	---	-----------



RADAR or GPS REQUIRED

5900 10000 FQF R-078 UMEX

VGSI and ILS glidepath not coincident (VGSI Angle 3.00/TCH 66).

IRINE I-BXP 4.9 RADAR

HHOLT I-BXP 8.1 RADAR

HALTR I-BXP 11.3 RADAR

GRIFS I-BXP 13.9 RADAR

GWENS I-BXP 17.6 RADAR

GS 3.00° TCH 48

0.7 4.4 NM 3.2 NM 3.2 NM 2.6 NM 3.7 NM

CATEGORY	A	B	C	D
S-ILS 17L	# 5539/24 200 (200-½)			
S-LOC 17L	5620/24 281 (200-½)			

FAF to MAP 5.1 NM					
Knots	60	90	120	150	180
Min:Sec	5:06	3:24	2:33	2:02	1:42

DENVER, COLORADO
Amdt 4A 11DEC14

39°52'N-104°40'W

DENVER INTL (DEN) ILS or LOC RWY 17L

SW-1, 07 AUG 2025 to 04 SEP 2025

SW-1, 07 AUG 2025 to 04 SEP 2025