

DENVER, COLORADO

AL-9077 (FAA)

24361

LOC/DME I-DQQ <b>111.9</b> Chan <b>56</b>	APP CRS <b>173°</b>	Rwy Idg <b>16000</b> TDZE <b>5326</b> Apt Elev <b>5434</b>
---	------------------------	--

# ILS or LOC RWY 16R

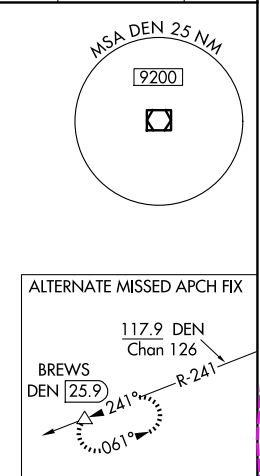
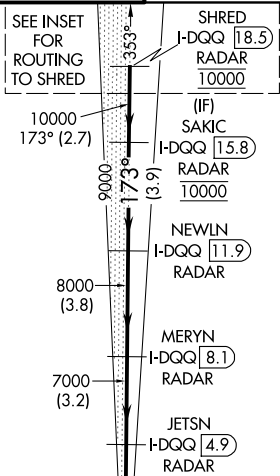
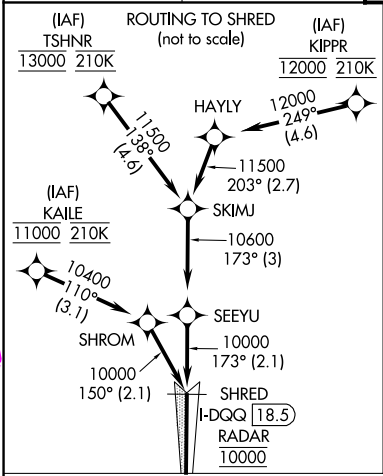
DENVER INTL (DEN)

For inoperative MALSR, increase S-LOC Cat C/D visibility to RVR 4500. Simultaneous approach authorized with Rwy 17L and 17R. DME required.

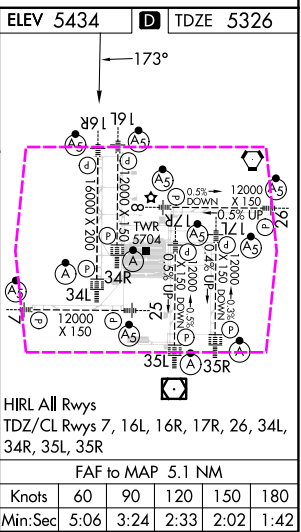
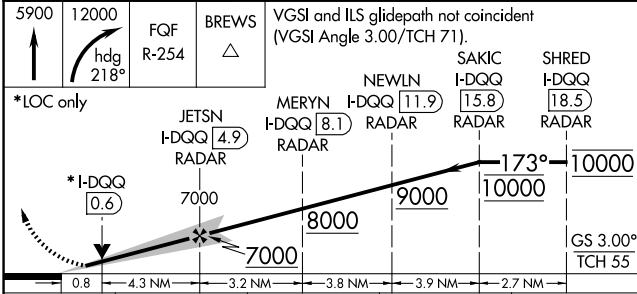
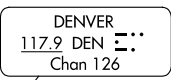
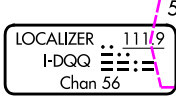
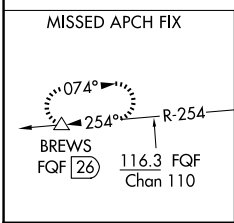
MALSR

MISSED APPROACH: Climb to 5900 then climbing right turn to 12000 on heading 218° and on FGF VORTAC R-254 to BREWS/FQF 26 DME and hold.

D-ATIS <b>125.6 379.9 (ARR)</b> <b>134.025 (DEP)</b>	DENVER APP CON <b>119.3 307.3 (N)</b> <b>120.35 379.3 (S)</b>	DENVER TOWER <b>135.3 351.95</b>	GND CON <b>121.35 379.175 (W)</b> <b>121.85 377.1 (E)</b>	CLNC DEL <b>118.75</b>	CPDLC
--	---	-------------------------------------	---	---------------------------	-------



## RADAR or GPS REQUIRED



CATEGORY	A	B	C	D
S-ILS 16R	5526/18	200 (100-½)		
S-LOC 16R	5640/24	314 (300-½)		

DENVER, COLORADO  
Amdt 1A 11DEC14

39°52'N-104°40'W

# DENVER INTL (DEN)

## ILS or LOC RWY 16R

SW-1, 10 JUL 2025 to 07 AUG 2025

SW-1, 10 JUL 2025 to 07 AUG 2025

DENVER, COLORADO

AL-9077 (FAA)

25219

LOC/DME I-DQQ <b>111.9</b> Chan <b>56</b>	APP CRS <b>173°</b>	Rwy Ldg TDZE <b>5326</b> Apt Elev <b>5434</b>
---	------------------------	---

# ILS or LOC RWY 16R

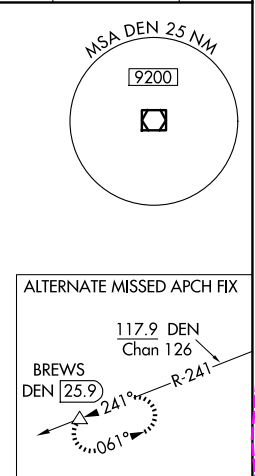
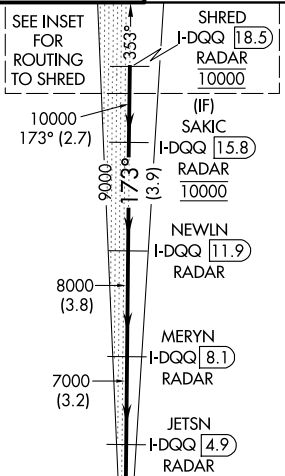
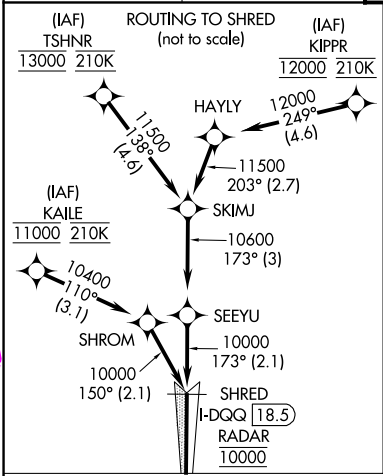
DENVER INTL (DEN)

For inoperative MALSR, increase S-LOC Cat C/D visibility to RVR 4500. Simultaneous approach authorized with Rwy 17L and 17R. DME required.

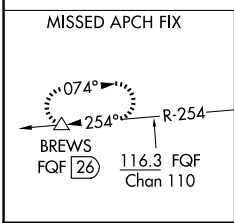
MALSR

MISSED APPROACH: Climb to 5900 then climbing right turn to 12000 on heading 218° and on FGF VORTAC R-254 to BREWS/FQF 26 DME and hold.

D-ATIS <b>125.6 379.9 (ARR)</b> <b>134.025 (DEP)</b>	DENVER APP CON <b>119.3 307.3 (N)</b> <b>120.35 379.3 (S)</b>	DENVER TOWER <b>135.3 351.95</b>	GND CON <b>121.35 379.175 (W)</b> <b>121.85 377.1 (E)</b>	CLNC DEL <b>118.75</b>	CPDLC
--	---	-------------------------------------	---	---------------------------	-------

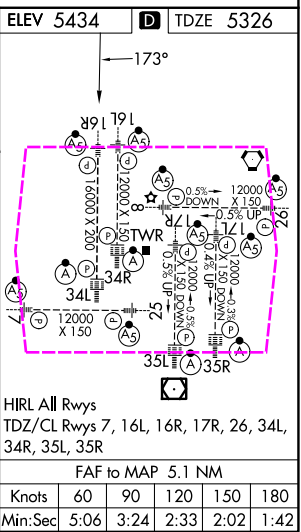
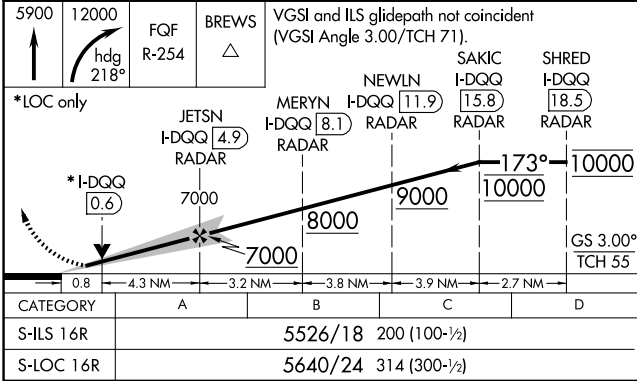


## RADAR or GPS REQUIRED



LOCALIZER 111.9  
I-DQQ  
Chan 56

DENVER  
117.9 DEN  
Chan 126



DENVER, COLORADO  
Amdt 1A 11DEC14

39°52'N-104°40'W

## DENVER INTL (DEN) ILS or LOC RWY 16R

SW-1, 07 AUG 2025 to 04 SEP 2025

SW-1, 07 AUG 2025 to 04 SEP 2025