
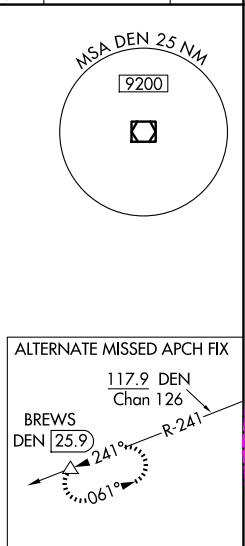
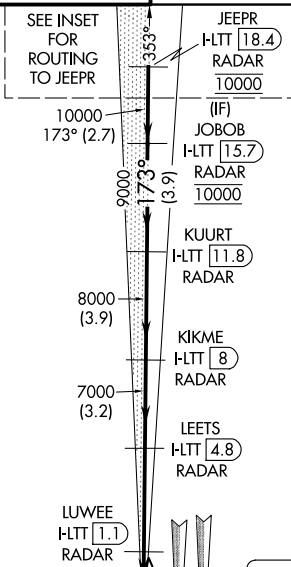
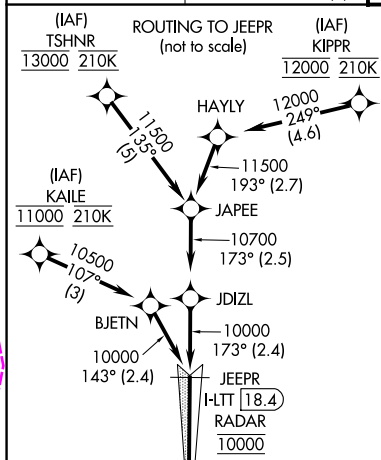


LOC/DME I-LTT <b>111.1</b> Chan <b>48</b>	APP CRS <b>173°</b>	Rwy Idg TDZE Apt Elev	<b>12000</b> <b>5357</b> <b>5434</b>
---	------------------------	-----------------------------	--

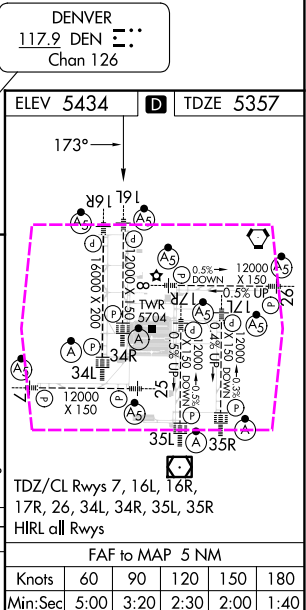
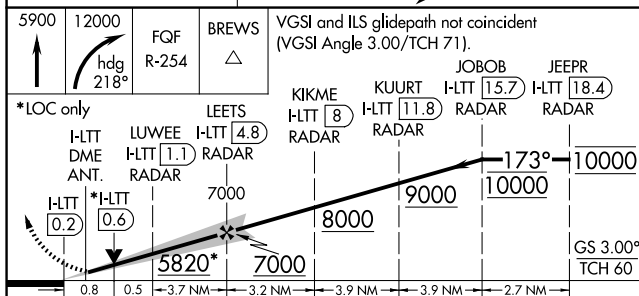
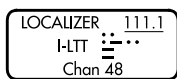
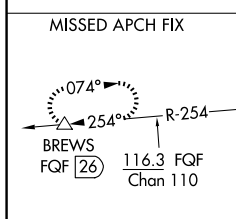
ILS or LOC RWY 16L  
DENVER INTL (DEN)

<p><b>▼</b> Simultaneous approach authorized with Rwy 17L/17R. DME required. S-LOC 16L DME or RADAR required. For inoperative MALSR, increase S-LOC Cat C/D visibility to RVR 4500.</p>	<p><b>MALSR</b></p> 	<p><b>MISSED APPROACH:</b> Climb to 5900 then climbing right turn to 12000 on heading 218° and on G/F VORTAC R-254 to BREWS/G/F 26 DME and hold.</p>
---	---	--

D-ATIS	DENVER APP CON	DENVER TOWER	GND CON	CLNC DEL	CPDLC
<b>125.6 379.9 (ARR)</b>	<b>119.3 307.3 (N)</b>		<b>121.35 379.175 (W)</b>		
<b>134.025 (DEP)</b>	<b>120.35 379.3 (S)</b>	<b>135.3 351.95</b>	<b>121.85 377.1 (E)</b>	<b>118.75</b>	



## RADAR or GPS REQUIRED



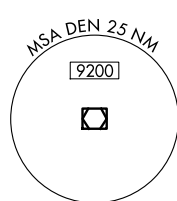
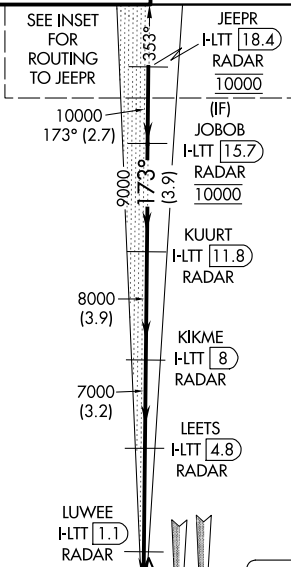
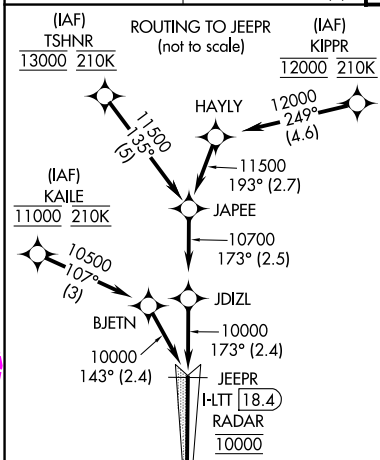
SW-1, 10 JUL 2025 to 07 AUG 2025

SW-1, 10 JUL 2025 to 07 AUG 2025

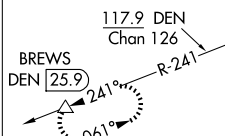
ILS or LOC RWY 16L  
DENVER INTL (DEN)

**MISSED APPROACH:** Climb to 5900 then climbing right turn to 12000 on heading 218° and on FQF VORTAC R-254 to BREWS/FQF 26 DME and hold.

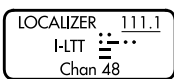
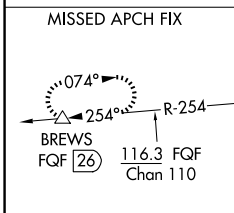
D-ATIS	DENVER APP CON	DENVER TOWER	GND CON	CLNC DEL	CPDLC
<b>125.6 379.9 (ARR)</b>	<b>119.3 307.3 (N)</b>		<b>121.35 379.175 (W)</b>		
<b>134.025 (DEP)</b>	<b>120.35 379.3 (S)</b>	<b>135.3 351.95</b>	<b>121.85 377.1 (E)</b>	<b>118.75</b>	



ALTERNATE MISSED APCH FIX

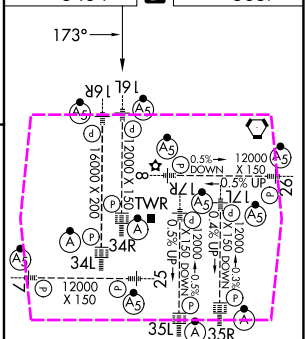
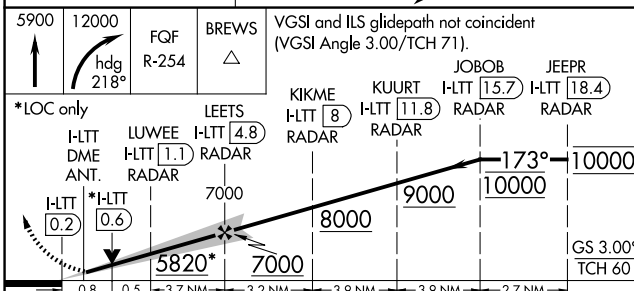


## RADAR or GPS REQUIRED



DENVER  
7.9 DEN  
Chan 126

ELEV 5434	<b>D</b>	TDZE 5357
-----------	----------	-----------



TDZ/CL Rwy 7, 16L, 16R,  
17R, 26, 34L, 34R, 35L, 35R  
HRL all Rwy

FAF to MAP 5 NM					
Knots	60	90	120	150	180
Min:Sec	5:00	3:20	2:30	2:00	1:40

39°52'N-104°40'W

DENVER INTL (DEN)

ILS or LOC RWY 16L

SW-1, 07 AUG 2025 to 04 SEP 2025

SW-1, 07 AUG 2025 to 04 SEP 2025