

DENVER, COLORADO

AL-9077 (FAA)

24361

LOC/DME I-DPP 110.15 Chan 38(Y)	APP CRS 353°	Rwy Idg 12000 TDZE 5370 Apt Elev 5434
---	------------------------	--

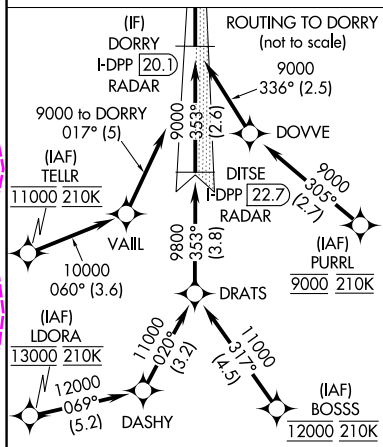
ILS RWY 35R (SA CAT I)

DENVER INTL (DEN)

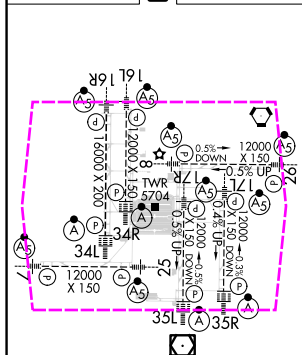
⚠ Requires specific OPSPEC, MSPEC, or LOA approval and use of HUD to DH. Simultaneous approach authorized with Rwy 34L, Rwy 34R, and Rwy 35L.	ALSF-2 	MISSED APPROACH: Climb to 5800 then climbing right turn to 10000 on heading 048° and on GLL VORTAC R-136 to CEDUK/GLL 16 DME and hold.
--	------------	--

D-ATIS 125.6 379.9 (ARR) 134.025 (DEP)	DENVER APP CON 119.3 307.3 (N) 120.35 379.3 (S)	DENVER TOWER 132.35 239.275	GND CON 121.35 379.175 (W) 121.85 377.1 (E)	CLNC DEL 118.75	CPDLC
--	---	---------------------------------------	---	---------------------------	-------

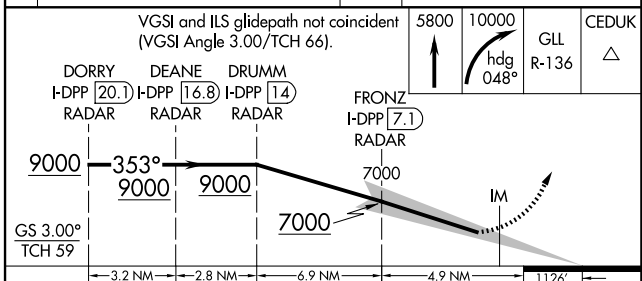
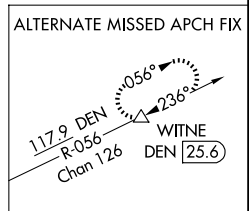
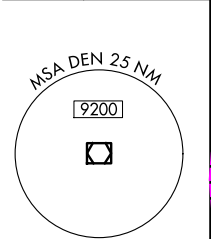
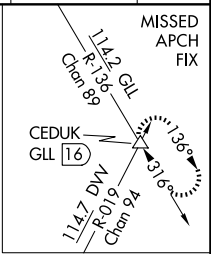
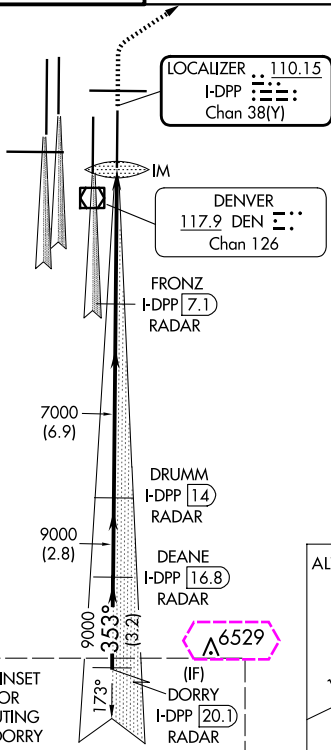
RADAR or GPS REQUIRED



ELEV 5434 **D** TDZE 5370



HIRL all Rwy
TDZ/CL Rwy 7, 16L, 16R, 17R, 26, 34L,
34R, 35L, 35R



CATEGORY	A	B	C	D
S-ILS 35R	RA 161/14 150 DA 5520			

SA CATEGORY I ILS - SPECIAL AIRCREW & AIRCRAFT CERTIFICATION REQUIRED

DENVER, COLORADO
Amdt 3A 11DEC14

39°52'N-104°40'W

DENVER INTL (DEN)
ILS RWY 35R (SA CAT I)

SW-1, 10 JUL 2025 to 07 AUG 2025

SW-1, 10 JUL 2025 to 07 AUG 2025

DENVER, COLORADO

AL-9077 (FAA)

25219

LOC/DME I-DPP 110.15 Chan 38(Y)	APP CRS 353°	Rwy Ldg TDZE Apt Elev 12000 5370 5434
---	------------------------	---

ILS RWY 35R (SA CAT I)

DENVER INTL (DEN)

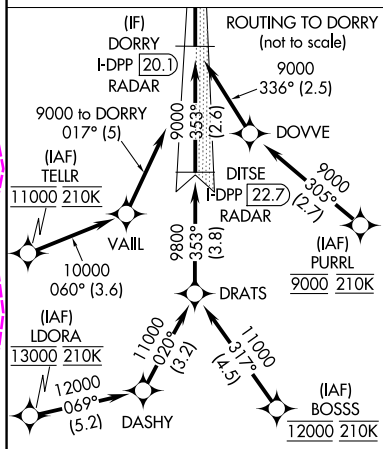
Requires specific OPSPEC, MSPEC, or LOA approval and use of HUD to DH. Simultaneous approach authorized with Rwy 34L, Rwy 34R, and Rwy 35L.



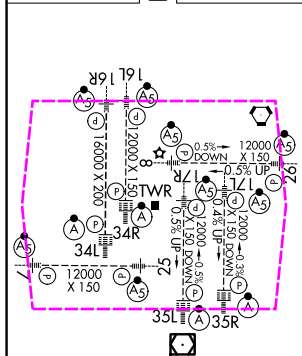
MISSED APPROACH: Climb to 5800 then climbing right turn to 10000 on heading 048° and on GLL VORTAC R-136 to CEDUK/GLL 16 DME and hold.

D-ATIS 125.6 379.9 (ARR) 134.025 (DEP)	DENVER APP CON 119.3 307.3 (N) 120.35 379.3 (S)	DENVER TOWER 132.35 239.275	GND CON 121.35 379.175 (W) 121.85 377.1 (E)	CLNC DEL 118.75	CPDLC
--	---	---------------------------------------	---	---------------------------	-------

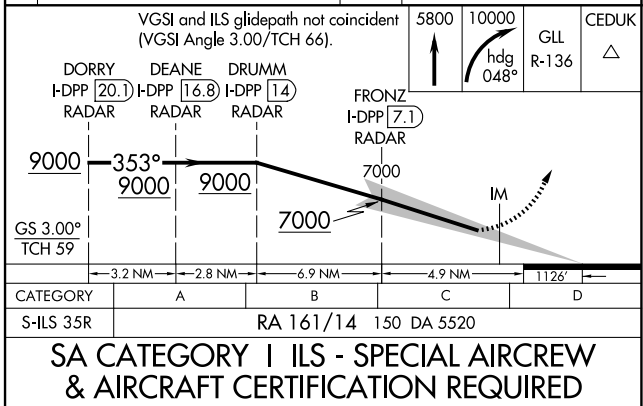
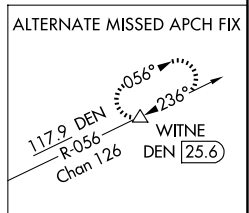
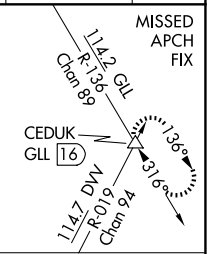
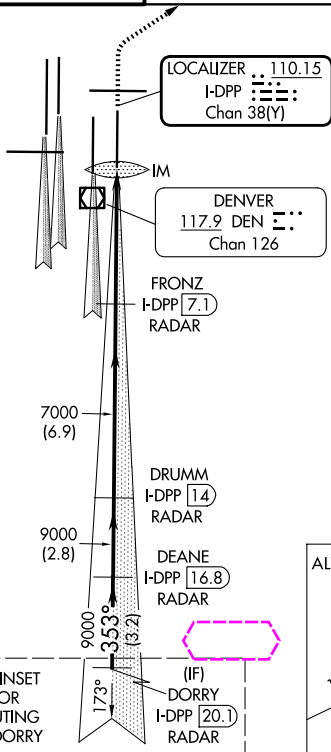
RADAR or GPS REQUIRED



ELEV 5434 D TDZE 5370



HIRL all Rwy
TDZ/CL Rwy 7, 16L, 16R, 17R, 26, 34L,
34R, 35L, 35R



DENVER, COLORADO
Amdt 3A 11DEC14

39°52'N-104°40'W

ILS RWY 35R (SA CAT I)

DENVER INTL (DEN)

SW-1, 07 AUG 2025 to 04 SEP 2025