

DENVER, COLORADO

AL-9077 (FAA)

24361

LOC/DME I-DPP 110.15 Chan 38(Y)	APP CRS 353°	Rwy Idg 12000 TDZE 5370 Apt Elev 5434
---	------------------------	--

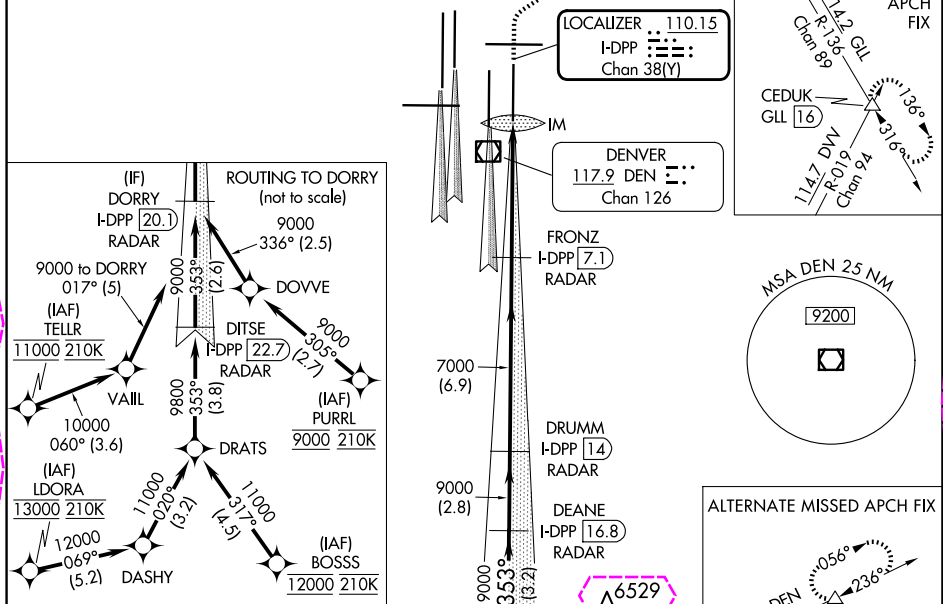
ILS RWY 35R (CAT II & III)

DENVER INTL (DEN)

Simultaneous approach authorized with Rwy 34L, Rwy 34R, and Rwy 35L. CAT II: RVR 1000 authorized with specific OPSPEC, MSPEC, or LOA approval and use of autoland or HUD to touchdown.	ALSf-2	MISSED APPROACH: Climb to 5800 then climbing right turn to 10000 on heading 048° and on GLL VORTAC R-136 to CEDUK/GLL 16 DME and hold.
--	--------	--

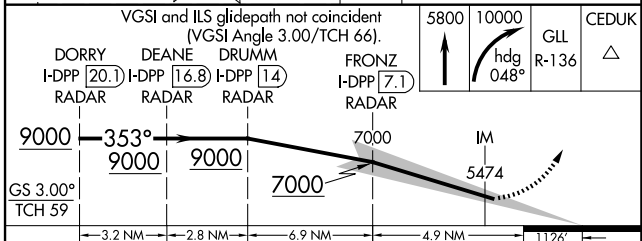
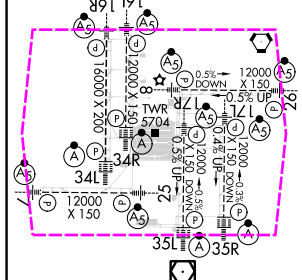
D-ATIS 125.6 379.9 (ARR) 134.025 (DEP)	DENVER APP CON 119.3 307.3 (N) 120.35 379.3 (S)	DENVER TOWER 132.35 239.275	GND CON 121.35 379.175 (W) 121.85 377.1 (E)	CLNC DEL 118.75	CPDLC
--	---	---------------------------------------	---	---------------------------	-------

RADAR or GPS REQUIRED



ELEV 5434	D	TDZE 5370
-----------	---	-----------

SEE INSET FOR ROUTING TO DORRY	(IF) DORRY I-DPP [20.1] RADAR	FRONZ I-DPP [7.1] RADAR	DEANE I-DPP [16.8] RADAR	DRUMM I-DPP [14] RADAR
--------------------------------	-------------------------------	-------------------------	--------------------------	------------------------



CATEGORY	A	B	C	D
S-ILS 35R	CAT II	RA 111/12	100 DA	5470
S-ILS 35R		CAT IIIa	RVR 07	
S-ILS 35R		CAT IIIb	RVR 03	
S-ILS 35R		CAT IIIc	NA	

CATEGORY II & III ILS - SPECIAL AIRCREW & AIRCRAFT CERTIFICATION REQUIRED

DENVER, COLORADO

Amdt 3A 11DEC14

39°52'N-104°40'W

DENVER INTL (DEN)

ILS RWY 35R (CAT II & III)

DENVER, COLORADO

AL-9077 (FAA)

25219

LOC/DME I-DPP 110.15 Chan 38(Y)	APP CRS 353°	Rwy Ldg TDZE 5370 Apt Elev 5434
---	------------------------	---

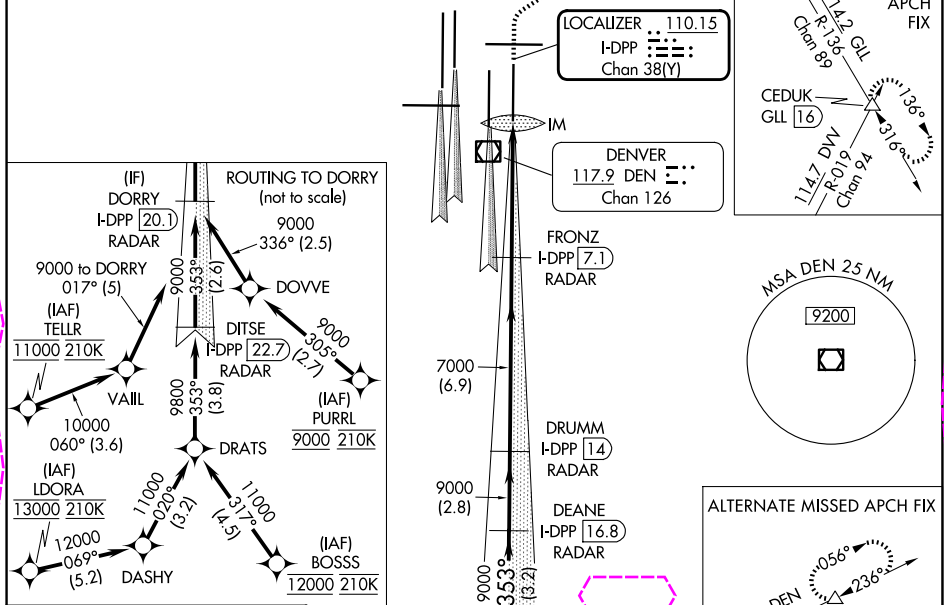
ILS RWY 35R (CAT II & III)

DENVER INTL (DEN)

Simultaneous approach authorized with Rwy 34L, Rwy 34R, and Rwy 35L. CAT II: RVR 1000 authorized with specific OPSPEC, MSPEC, or LOA approval and use of autoland or HUD to touchdown.	ALSF-2	MISSED APPROACH: Climb to 5800 then climbing right turn to 10000 on heading 048° and on GLL VORTAC R-136 to CEDUK/GLL 16 DME and hold.
--	--------	--

D-ATIS 125.6 379.9 (ARR) 134.025 (DEP)	DENVER APP CON 119.3 307.3 (N) 120.35 379.3 (S)	DENVER TOWER 132.35 239.275	GND CON 121.35 379.175 (W) 121.85 377.1 (E)	CLNC DEL 118.75	CPDLC
--	---	---------------------------------------	---	---------------------------	-------

RADAR or GPS REQUIRED

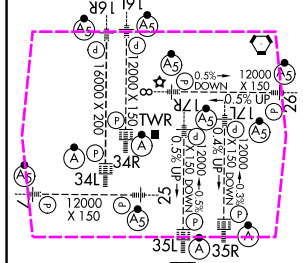


SW-1, 07 AUG 2025 to 04 SEP 2025

SW-1, 07 AUG 2025 to 04 SEP 2025

ELEV 5434	D	TDZE 5370
-----------	---	-----------

SEE INSET FOR ROUTING TO DORRY	(IF) DORRY I-DPP [20.1] RADAR
--------------------------------	-------------------------------



VGSi and ILS glidepath not coincident (VGSi Angle 3.00/TCH 66).				5800	10000	GLL R-136	CEDUK
DORRY I-DPP [20.1] RADAR	DEANE I-DPP [16.8] RADAR	DRUMM I-DPP [14] RADAR	FRONZ I-DPP [7.1] RADAR	↑	hdg 048°		△
9000	353°	9000	9000	7000	IM	5474	
GS 3.00°							
TCH 59							
	3.2 NM	2.8 NM	6.9 NM	4.9 NM	1126'		
CATEGORY	A	B	C	D			
S-ILS 35R	CAT II RA 111/12 100 DA 5470						
S-ILS 35R	CAT IIIa RVR 07						
S-ILS 35R	CAT IIIb RVR 03						
S-ILS 35R	CAT IIIc NA						

CATEGORY II & III ILS - SPECIAL AIRCREW & AIRCRAFT CERTIFICATION REQUIRED

DENVER, COLORADO

DENVER INTL (DEN)

Amdt 3A 11DEC14

39°52'N-104°40'W

ILS RWY 35R (CAT II & III)