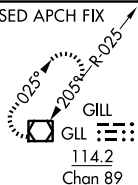


ILS RWY 35L (SA CAT I)
DENVER INTL (DEN)

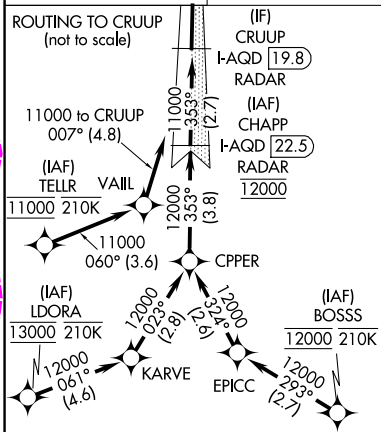
MISSED APPROACH: Climb to 10000 then right turn direct GLL VOR/DME and hold.

D-ATIS	DENVER APP CON	DENVER TOWER	GND CON	CLNC DEL	CPDLC
125.6 379.9 (ARR)	119.3 307.3 (N)	124.3 322.45	121.35 379.175 (W)	118.75	
134.025 (DEP)	120.35 379.3 (S)		121.85 377.1 (E)		

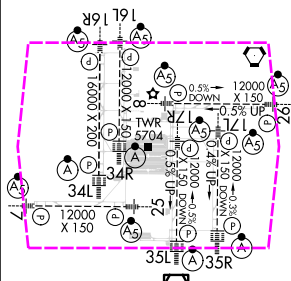


LOCALIZER 108.5
I-AQD
Chan 22

DENVER
117.9 DEN
Chan 126



ELEV 5434	D	TDZE 5434
-----------	----------	-----------



HIRL all Rwy's
TDZ/CL Rwy's 7, 16L, 16R, 17R, 26, 34L,
34R, 35L, 35R

39°52'N-104°40'W

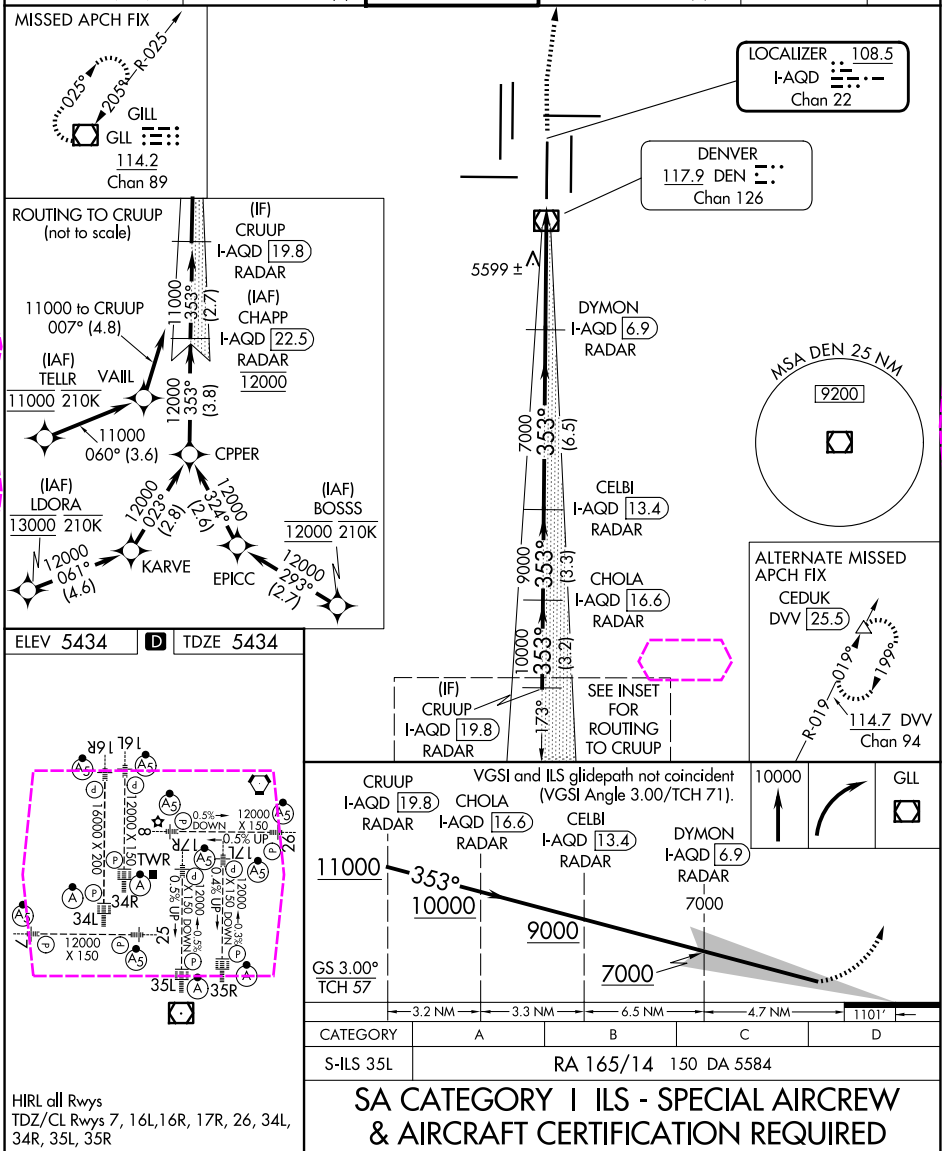
DENVER INTL (DEN)

ILS RWY 35L (SA CAT I)

ILS RWY 35L (SA CAT I)
DENVER INTL (DEN)

MISSED APPROACH: Climb to 10000 then right turn direct GLL VOR/DME and hold.

D-ATIS	DENVER APP CON	DENVER TOWER	GND CON	CLNC DEL	CPDLC
125.6 379.9 (ARR)	119.3 307.3 (N)		121.35 379.175 (W)		
134.025 (DEP)	120.35 379.3 (S)	124.3 322.45	121.85 377.1 (E)	118.75	



DENVER INTL (DEN)

39°52'N-104°40'W

ILS RWY 35L (SA CAT I)