

DENVER, COLORADO

AL-9077 (FAA)

24361

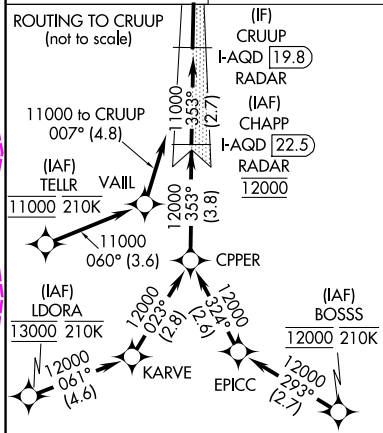
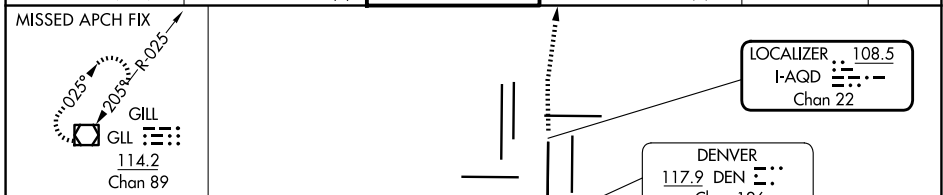
LOC/DME I-AQD 108.5 Chan 22	APP CRS 353°	Rwy Idg 12000 TDZE 5434 Apt Elev 5434
---	------------------------	--

ILS RWY 35L (CAT II & III)

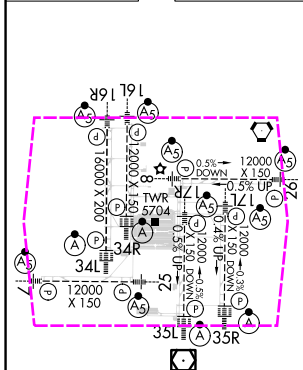
DENVER INTL (DEN)

RNAV 1-GPS or RADAR required for procedure entry.	ALSIF-2	MISSED APPROACH: Climb to 10000 then right turn direct GLL VOR/DME and hold.
Simultaneous approach authorized. CAT II: RVR 1000 authorized with specific OPSPEC, MSPEC, or LOA approval and use of autoland or HUD to touchdown.		

D-ATIS 125.6 379.9 (ARR) 134.025 (DEP)	DENVER APP CON 119.3 307.3 (N) 120.35 379.3 (S)	DENVER TOWER 124.3 322.45	GND CON 121.35 379.175 (W) 121.85 377.1 (E)	CLNC DEL 118.75	CPDLC
--	---	-------------------------------------	---	---------------------------	-------



ELEV 5434	D	TDZE 5434
-----------	---	-----------



CATEGORY	A	B	C	D
S-ILS 35L	CAT II RA 115/12 100 DA 5534			
S-ILS 35L	CAT III RVR 03			
CATEGORY II & III ILS - SPECIAL AIRCREW & AIRCRAFT CERTIFICATION REQUIRED				

DENVER, COLORADO

Amdt 5B 19JUL18

39°52'N-104°40'W

DENVER INTL (DEN)

ILS RWY 35L (CAT II & III)

SW-1, 10 JUL 2025 to 07 AUG 2025

SW-1, 10 JUL 2025 to 07 AUG 2025

DENVER, COLORADO

AL-9077 (FAA)

25219

LOC/DME I-AQD 108.5 Chan 22	APP CRS 353°	Rwy Ldg 12000 TDZE 5434 Apt Elev 5434
---	------------------------	--

ILS RWY 35L (CAT II & III)

DENVER INTL (DEN)

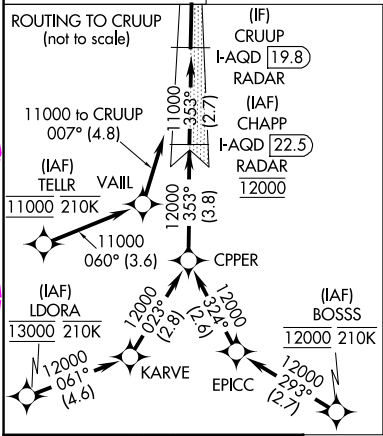
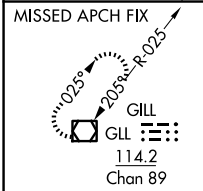
RNAV 1-GPS or RADAR required for procedure entry.

Simultaneous approach authorized. CAT II: RVR 1000 authorized with specific OPSPEC, MSPEC, or LOA approval and use of autoland or HUD to touchdown.

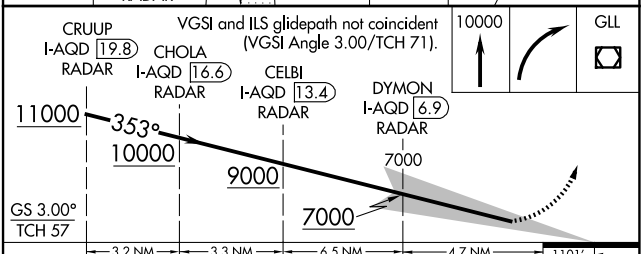
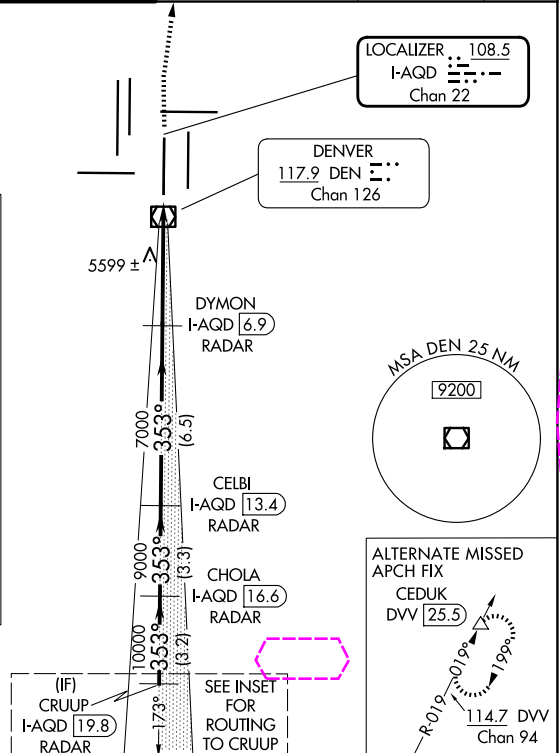
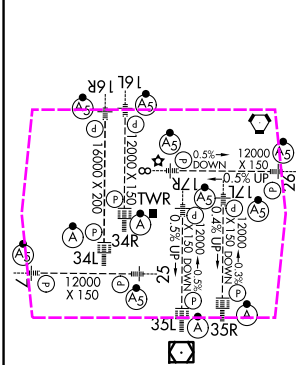
ALSF-2

MISSED APPROACH: Climb to 10000 then right turn direct GLL VOR/DME and hold.

D-ATIS 125.6 379.9 (ARR) 134.025 (DEP)	DENVER APP CON 119.3 307.3 (N) 120.35 379.3 (S)	DENVER TOWER 124.3 322.45	GND CON 121.35 379.175 (W) 121.85 377.1 (E)	CLNC DEL 118.75	CPDLC
--	---	-------------------------------------	---	---------------------------	-------



ELEV 5434	D	TDZE 5434
------------------	----------	------------------



CATEGORY	A	B	C	D
S-ILS 35L	CAT II RA 115/12 100 DA 5534			
S-ILS 35L	CAT III RVR 03			
CATEGORY II & III ILS - SPECIAL AIRCREW & AIRCRAFT CERTIFICATION REQUIRED				

DENVER, COLORADO

Amdt 5B 19JUL18

39°52'N-104°40'W

DENVER INTL (DEN)

ILS RWY 35L (CAT II & III)

SW-1, 07 AUG 2025 to 04 SEP 2025

SW-1, 07 AUG 2025 to 04 SEP 2025