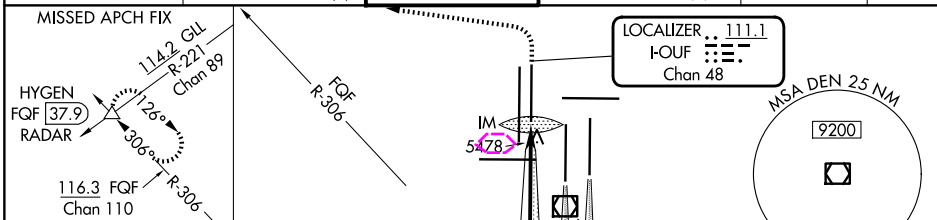


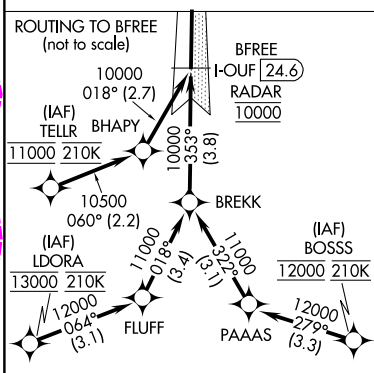
ILS RWY 34R (SA CAT I)
DENVER INTL (DEN)

MISSED APPROACH: Climb to 5800 then climbing left turn to 10000 on heading 270° and on FQF VORTAC R-306 to HYGEN/FQF 37.9 DME/RADAR and hold.

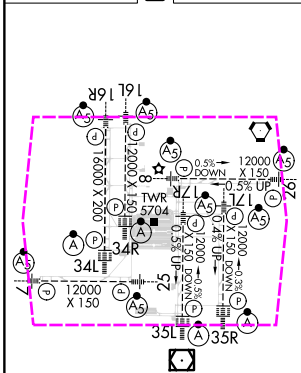
D-ATIS	DENVER APP CON	DENVER TOWER	GND CON	CLNC DEL	CPDLC
125.6 379.9 (ARR)	119.3 307.3 (N)	135.3 351.95	121.35 379.175 (W)	118.75	
134.025 (DEP)	120.35 379.3 (S)		121.85 377.1 (E)		



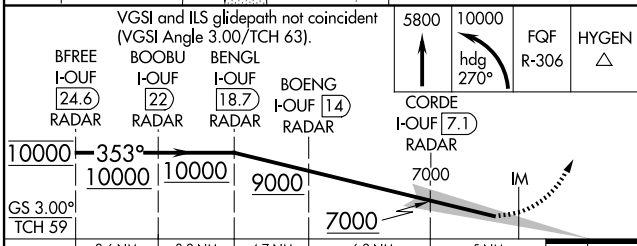
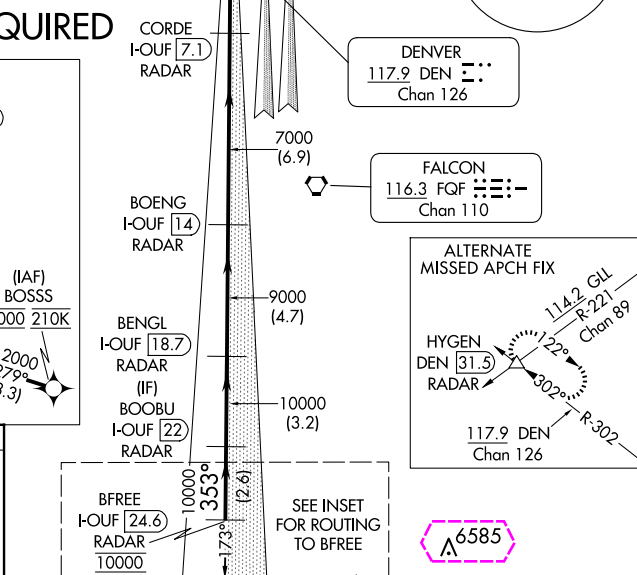
RADAR or GPS REQUIRED



ELEV 5434	D	TDZE 5354
-----------	----------	-----------



HIRL all Rwy's
TDZ/CL Rwy's 7, 16L, 16R, 17R, 26, 34L,
34R, 35L, 35R



	2.6 NM	3.2 NM	4.7 NM	6.9 NM	5 NM	1071'
CATEGORY	A	B	C	D		
S-ILS 34R	RA 175/14 150 DA 5504					

SA CATEGORY I ILS - SPECIAL AIRCREW
& AIRCRAFT CERTIFICATION REQUIRED

ILS RWY 34R (SA CAT I)

DENVER INTL (DEN)
ILS RWY 34R (SA CAT I)