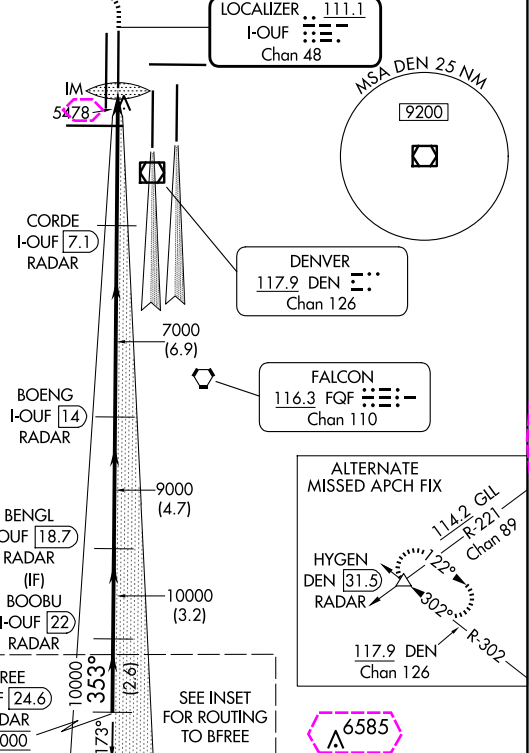
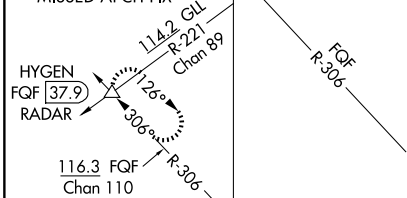


ILS RWY 34R (CAT II & III)
DENVER INTL (DEN)

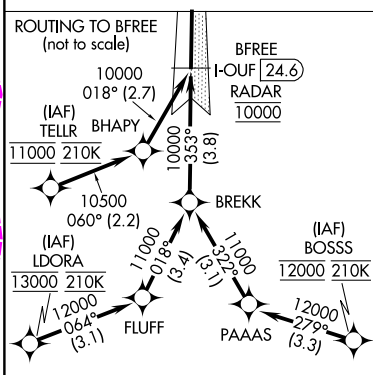
MISSED APPROACH: Climb to 5800 then climbing left turn to 10000 on heading 270° and on FQF VORTAC R-306 to HYGEN/FQF 37.9 DME/RADAR and hold.

D-ATIS	DENVER APP CON	DENVER TOWER	GND CON	CLNC DEL	CPDLC
125.6 379.9 (ARR)	119.3 307.3 (N)		121.35 379.175 (W)		
134.025 (DEP)	120.35 379.3 (S)	135.3 351.95	121.85 377.1 (E)	118.75	

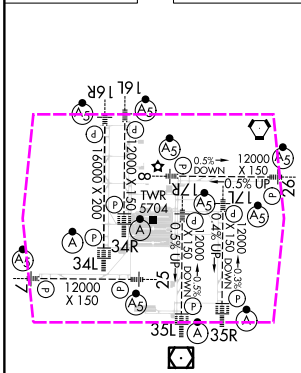
MISSED APCH FIX



RADAR or GPS REQUIRED



ELEV 5434	D	TDZE 5354
-----------	----------	-----------



HIRL all Rwy's
TDZ/CL Rwy's 7, 16L, 16R, 17R, 26, 34L,
34R, 35L, 35R

VGSi and ILS glidepath not coincident (VGSi Angle 3.00°/TCH 63).

BFRE I-OUF (24.6) RADAR

BOOBU I-OUF (22) RADAR

BENG I-OUF (18.7) RADAR

BOENG I-OUF (14) RADAR

CORDE I-OUF (7.1) RADAR

FQF R-306

HYGEN \triangle

10000 353° 10000 9000 7000 5457

GS 3.00° TCH 59

2.6 NM 3.2 NM 4.7 NM 6.9 NM 5 NM 1071'

A B C D

CAT II RA 155/12 100 DA 5454

CAT IIIa RVR 07

CAT IIIb RVR 03

CAT IIIc NA

CATEGORY II & III ILS - SPECIAL AIRCREW
& AIRCRAFT CERTIFICATION REQUIRED

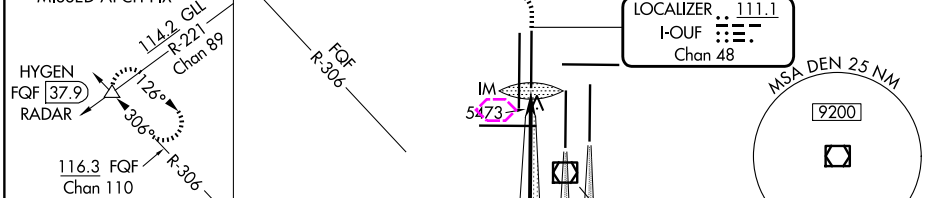
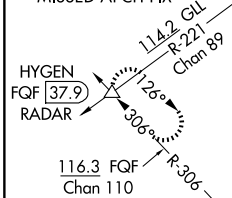
SW-1, 10 JUL 2025 to 07 AUG 2025

ILS RWY 34R (CAT II & III)
DENVER INTL (DEN)

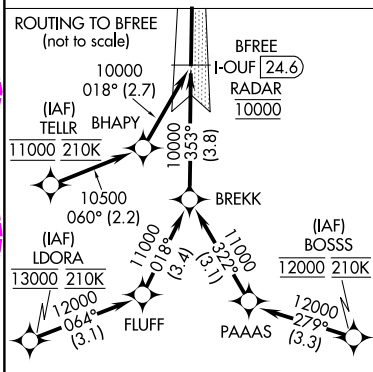
MISSED APPROACH: Climb to 5800 then climbing left turn to 10000 on heading 270° and on FQF VORTAC R-306 to HYGEN/FQF 37.9 DME/RADAR and hold.

D-ATIS	DENVER APP CON	DENVER TOWER	GND CON	CLNC DEL	CPDLC
125.6 379.9 (ARR)	119.3 307.3 (N)	135.3 351.95	121.35 379.175 (W)	118.75	
134.025 (DEP)	120.35 379.3 (S)		121.85 377.1 (E)		

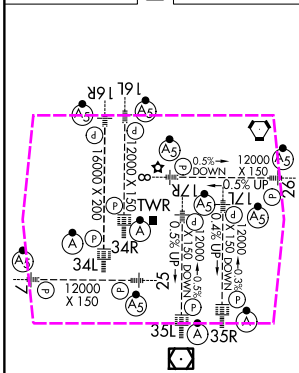
MISSED APCH FIX



RADAR or GPS REQUIRED



ELEV 5434	D	TDZE 5354
-----------	----------	-----------



HIRL all Rwy's
TDZ/CL Rwy's 7, 16L, 16R, 17R, 26, 34L,
34R, 35L, 35R

39°52'N-104°40'W

DENVER INTL (DEN)

ILS RWY 34R (CAT II & III)