

DENVER, COLORADO

AL-9077 (FAA)

24361

LOC/DME I-DXU 111.9 Chan 56	APP CRS 353°	Rwy Idg 16000 TDZE 5327 Apt Elev 5434
---	------------------------	--

ILS RWY 34L (SA CAT I)

DENVER INTL (DEN)

RNAV-1 GPS or RADAR required for procedure entry. From LDORA, BOSSS, TELLR: RNAV-1 GPS required. DME or RADAR required.

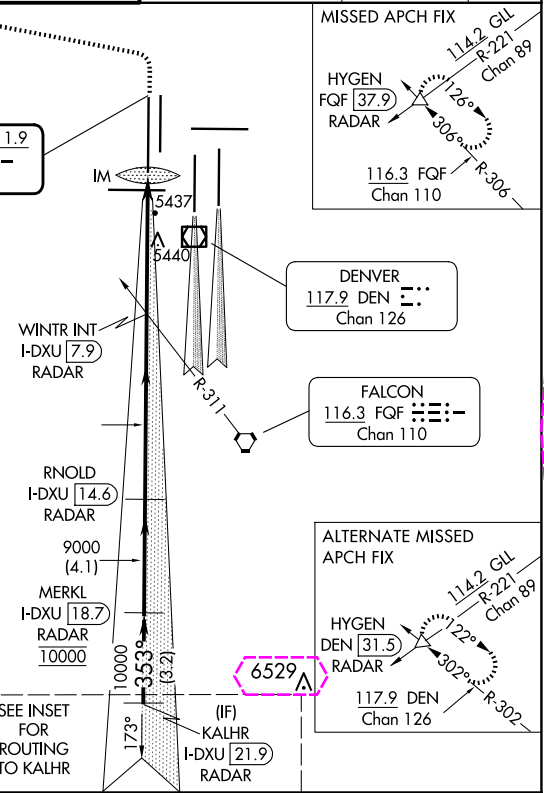
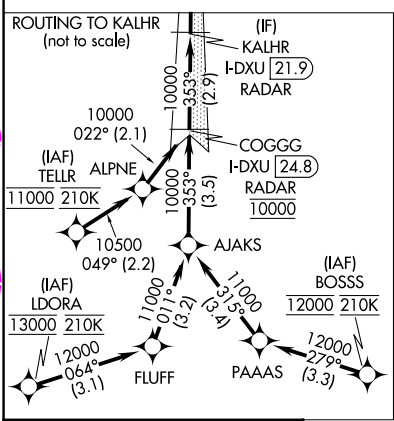
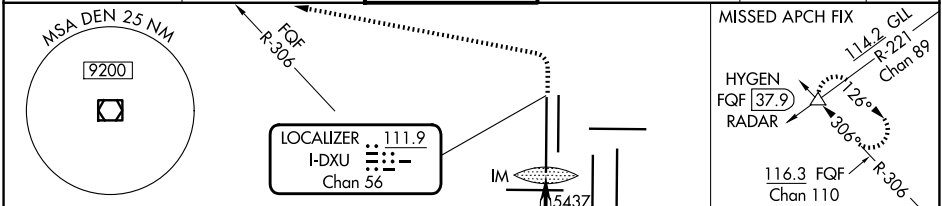
Requires specific OPSPEC, MSPEC, or LOA approval.

Simultaneous approach authorized with Rwy 35L/R.

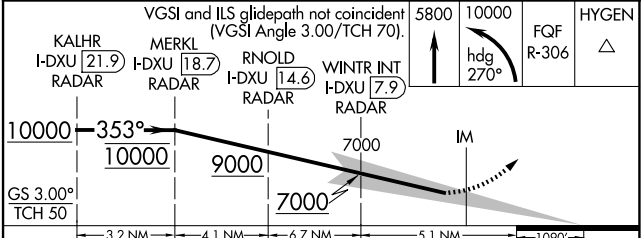
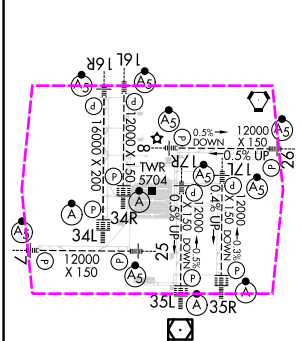
ALSF-2

MISSED APPROACH: Climb to 5800 then climbing left turn to 10000 on heading 270° and FQF VORTAC R-306 to HYGEN/FQF 37.9 DME/RADAR and hold.

D-ATIS 125.6 379.9 (ARR) 134.025 (DEP)	DENVER APP CON 119.3 307.3 (N) 120.35 379.3 (S)	DENVER TOWER 135.3 351.95	GND CON 121.35 379.175 (W) 121.85 377.1 (E)	CLNC DEL 118.75	CPDLC
--	---	-------------------------------------	---	---------------------------	-------



ELEV 5434 TDZE 5327



CATEGORY	A	B	C	D
S-ILS 34L	RA 148/14 150 DA 5477			
SA CATEGORY I ILS - SPECIAL AIRCREW & AIRCRAFT CERTIFICATION REQUIRED				

DENVER, COLORADO

Amdt 2C 07OCT21

39°52'N-104°40'W

DENVER INTL (DEN)

ILS RWY 34L (SA CAT I)

SW-1, 10 JUL 2025 to 07 AUG 2025

SW-1, 10 JUL 2025 to 07 AUG 2025

DENVER, COLORADO

AL-9077 (FAA)

25219

LOC/DME I-DXU 111.9 Chan 56	APP CRS 353°	Rwy Ldg 16000 TDZE 5327 Apt Elev 5434
---	------------------------	--

ILS RWY 34L (SA CAT I)

DENVER INTL (DEN)

RNAV-1 GPS or RADAR required for procedure entry. From LDORA, BOSSS, TELLR: RNAV-1 GPS required. DME or RADAR required.

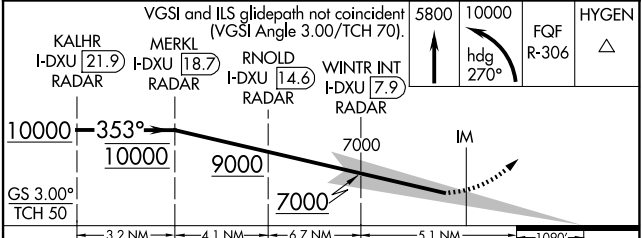
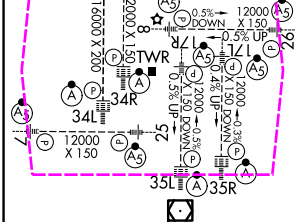
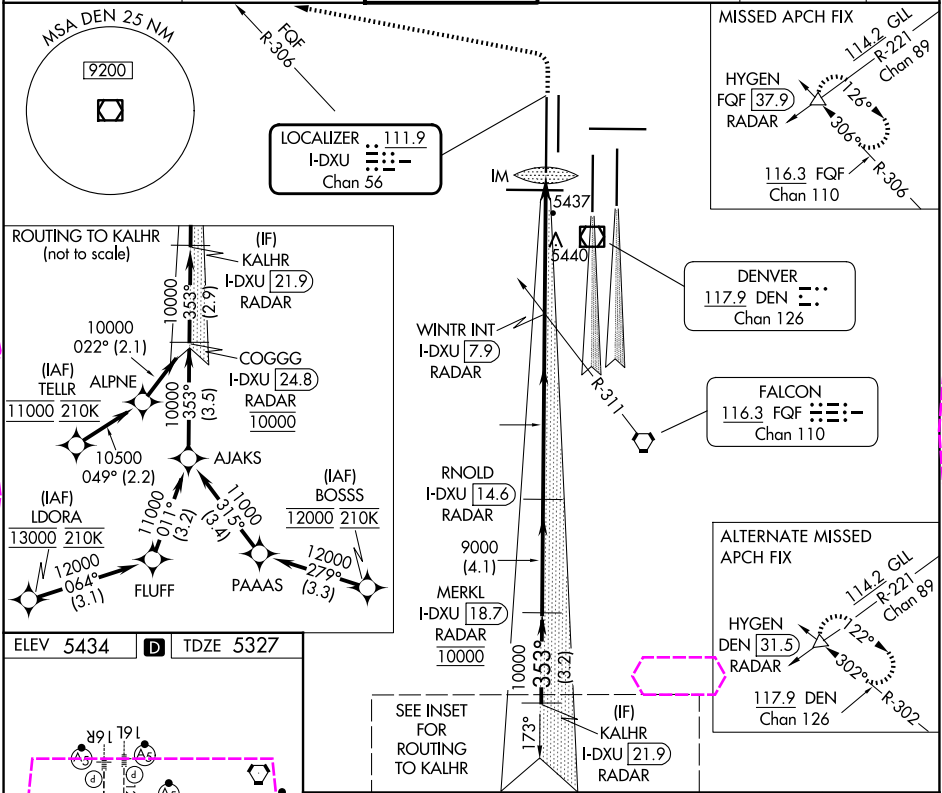
Requires specific OPSPEC, MSPEC, or LOA approval.

Simultaneous approach authorized with Rwy 35L/R.

ALSF-2

MISSED APPROACH: Climb to 5800 then climbing left turn to 10000 on heading 270° and FQF VORTAC R-306 to HYGEN/FQF 37.9 DME/RADAR and hold.

D-ATIS 125.6 379.9 (ARR) 134.025 (DEP)	DENVER APP CON 119.3 307.3 (N) 120.35 379.3 (S)	DENVER TOWER 135.3 351.95	GND CON 121.35 379.175 (W) 121.85 377.1 (E)	CLNC DEL 118.75	CPDLC
--	---	-------------------------------------	---	---------------------------	-------



CATEGORY	A	B	C	D
S-ILS 34L	RA 148/14 150 DA 5477			
SA CATEGORY I ILS - SPECIAL AIRCREW & AIRCRAFT CERTIFICATION REQUIRED				

DENVER, COLORADO
Amdt 2C 07OCT21

39°52'N-104°40'W

DENVER INTL (DEN)
ILS RWY 34L (SA CAT I)

SW-1, 07 AUG 2025 to 04 SEP 2025

SW-1, 07 AUG 2025 to 04 SEP 2025