

MOUNT VERNON, TEXAS

AL-9047 (FAA)

23054

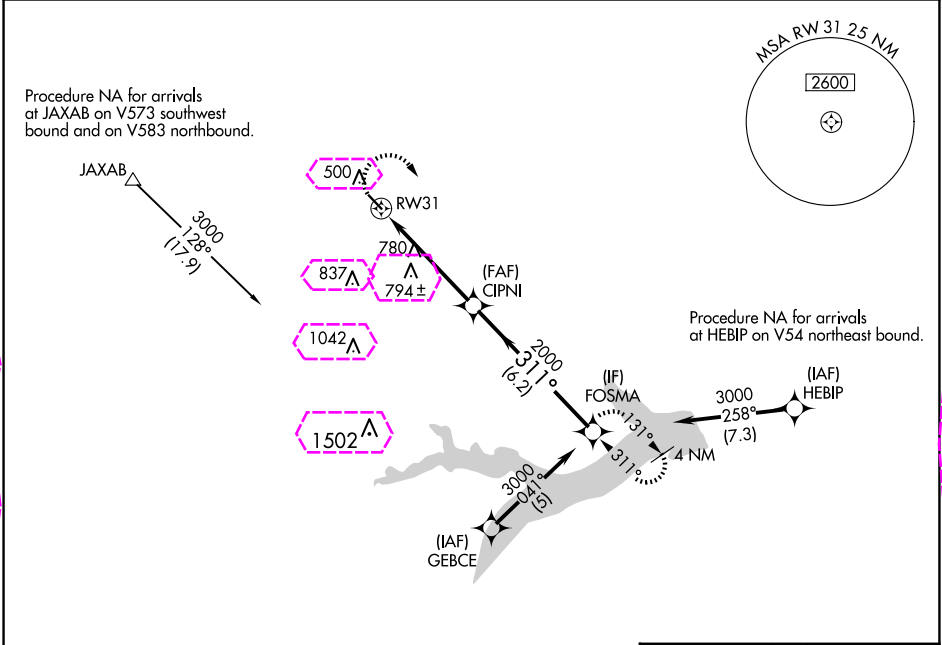
APP CRS	Rwy Idg	3900
311°	TDZE	412
	Apt Elev	412



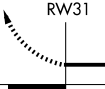



RNAV (GPS) RWY 31

FRANKLIN COUNTY (F53)

RNP APCH.	MISSED APPROACH: Climbing right turn to 3000 direct FOSMA and hold.
NA	Circling Rwy 13 NA at night. Rwy 31 helicopter visibility reduction below ¾ SM NA. Use Mount Pleasant Rgnl altimeter setting; when not received, procedure NA.

OSA AWOS-3 119.775	FORT WORTH CENTER 132.025 360.75	UNICOM 123.0 (CTAF)
-----------------------	-------------------------------------	------------------------



				ELEV 412		TDZE 412	
							
RW31		CIPNI		FOSMA		436	
4.8 NM		6.2 NM		311°		311°	
3.05°		2000		3000		3900 X 40	
TCH 40							
CATEGORY	A		B		C		D
LNAV MDA	1160-1 748 (800-1)		1160-1¼ 748 (800-1¼)		NA		
CIRCLING	1160-1 748 (800-1)		1160-1¼ 748 (800-1¼)		NA		
MIRL Rwy 13-31							

MOUNT VERNON, TEXAS
Orig-B 21MAY20

33°13'N-095°14'W

FRANKLIN COUNTY (F53)
RNAV (GPS) RWY 31

SC-2, 10 JUL 2025 to 07 AUG 2025

SC-2, 10 JUL 2025 to 07 AUG 2025

MOUNT VERNON, TEXAS

AL-9047 (FAA)

25219

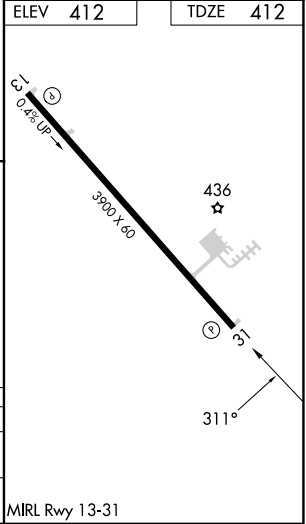
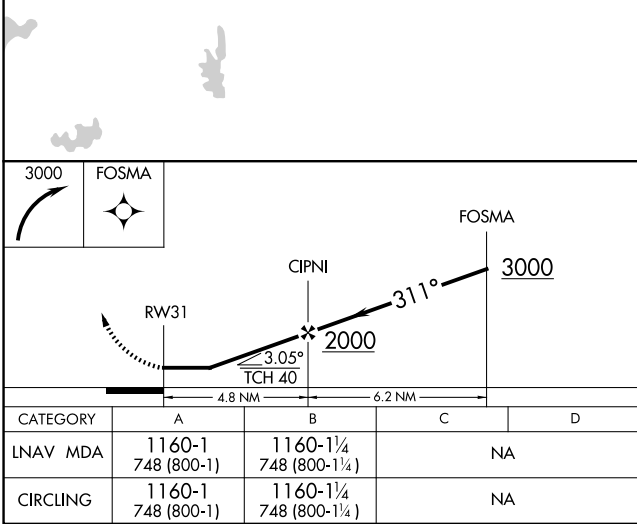
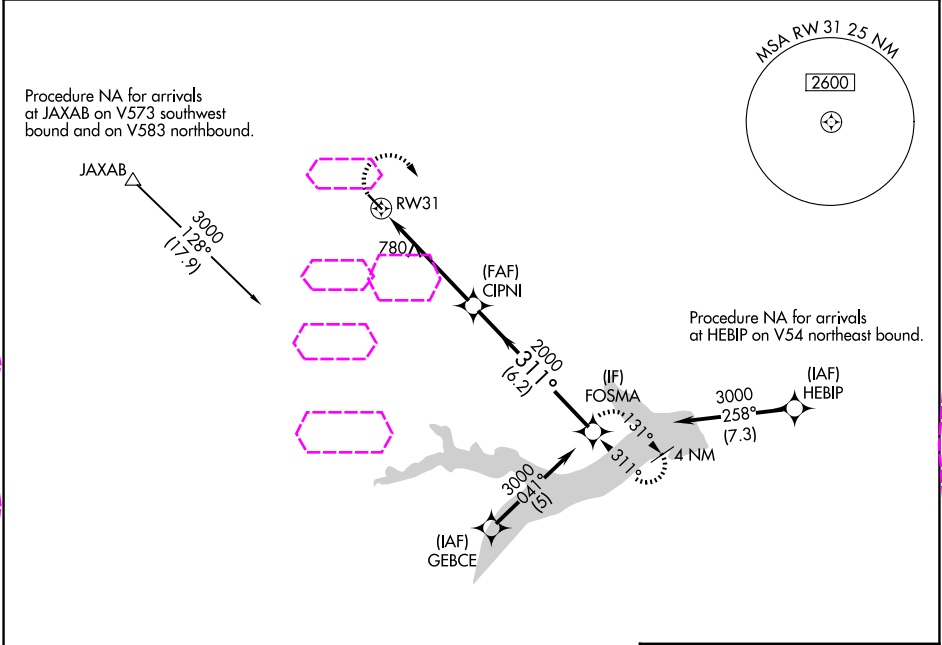
APP CRS	Rwy Ldg	3900
311°	TDZE	412
	Apt Elev	412

RNAV (GPS) RWY 31

FRANKLIN COUNTY (F53)

RNP APCH.	MISSED APPROACH: Climbing right turn to 3000 direct FOSMA and hold.
NA	Circling Rwy 13 NA at night. Rwy 31 helicopter visibility reduction below 3/4 SM NA. Use Mount Pleasant Rgnl altimeter setting; when not received, procedure NA.

OSA AWOS-3 119.775	FORT WORTH CENTER 132.025 317.75	UNICOM 123.0 (CTAF)
-----------------------	-------------------------------------	------------------------



MOUNT VERNON, TEXAS
Orig-B 21MAY20

33°13'N-095°14'W

RNAV (GPS) RWY 31

SC-2, 07 AUG 2025 to 04 SEP 2025

SC-2, 07 AUG 2025 to 04 SEP 2025